

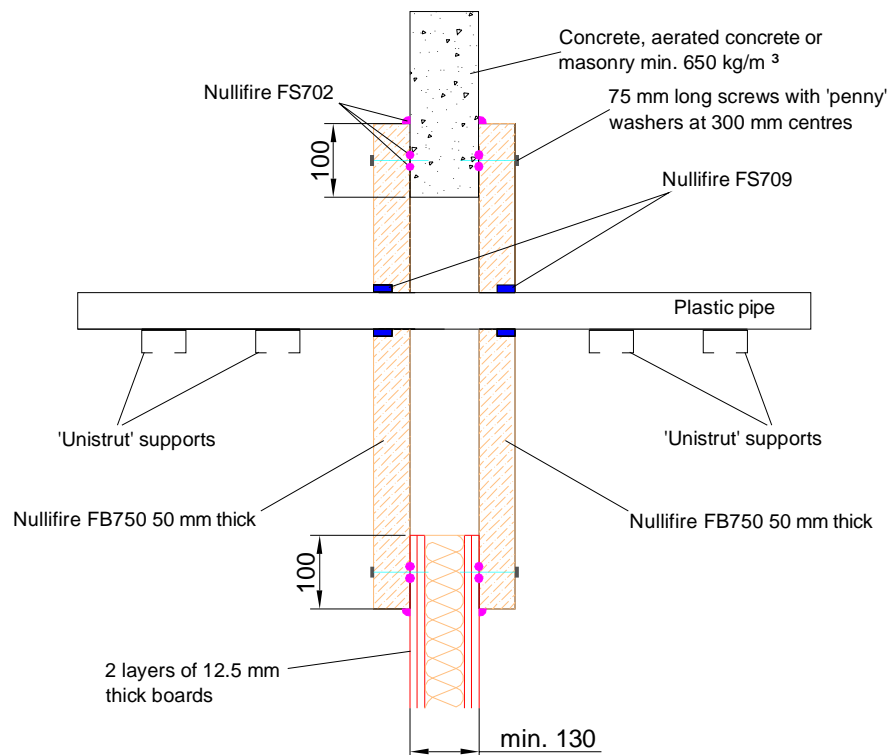
Nullifire Technical Drawings

FS709 Intumescent Sealant Pipe Penetrations Through Walls

Table of Contents

- ▶ Pipe penetration seal with 2x50mm thick Nullifire FB750 in a flexible or rigid wall, pattern fixed (FS709-PS1)
- ▶ Pipe penetration seal with 2x50mm thick Nullifire FB750 in a flexible or rigid wall, back to back (FS709-PS2)
- ▶ uPVC and ABS pipe penetration seal in minimum 100mm thick walls (FS709-PS3)
- ▶ Copper, PEX and ABS pipe penetration seal in minimum 100mm thick walls (FS709-PS4a)
- ▶ uPVC and PE pipe penetration seal in minimum 100mm thick walls (FS709-PS4b)
- ▶ PE-pipe and pipe in pipe penetration seal in minimum 100mm thick walls (FS709-PS5)
- ▶ Copper pipe, Ø160mm penetration seal in minimum 100mm thick walls (FS709-PS6)

Nullifire FS709-PS1



APPROVAL:

ETA 17/0388

Tested pipe types and max. Ø of the pipes

Look at the table in this detail

FS709-PS1

Fire class; Look at the table in this detail

Additional information ETA-approval/ Annex A.

Technical installation instructions need to be followed installing the products.

The max. seal size of 1200 mm wide by 1800 mm high

Min. 100 mm to edge of seal and between services

The max. cross section of services 60 %.

The min. permitted separation between pipes is 95 mm

130 mm airgap between two FB750

Services	Seal components	Fire class
PEX pipe, up to Ø28mm / 2.6mm wall	25 x 10mm Nullifire FS709 flush to both faces	EI 90 U/C

U/C = (Uncapped/Capped)

THE CONTENTS OF THE DRAWING

Pipe penetration seal with 2x50mm thick Nullifire FB750 in a flexible or rigid wall, pattress fixed

DESIGNER

REV

DATE

27.9.2018

SCALE

Not scaled

DETAIL MARK

FS709-PS1

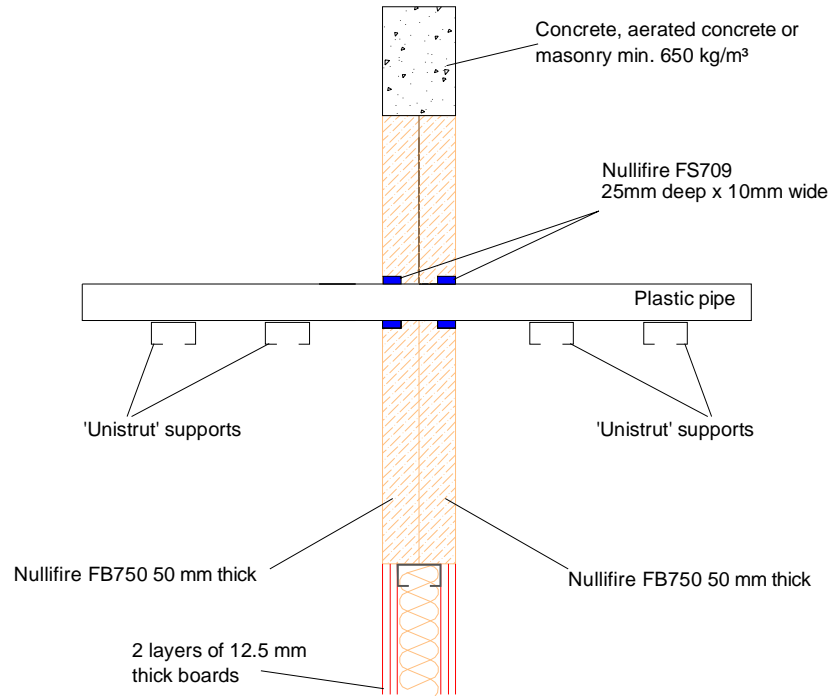
Nullifire has provided this specification on the basis of the data and information given to Nullifire by the customer, the Nullifire product information and level of technical knowledge this specification relates to is expected to provide the level of fire performance, should the proposed detail be subjected to the standardised fire resistance performance against which the judgment has been made.

The accuracy of this specification relies on the following:
 1. Only Nullifire products as defined in the specification are used.
 2. The specific products are installed by a competent person, utilising Nullifire installation manual and data sheets noting limitations.
 3. The proposed specification has been checked by the user.
 4. For Details on CE Marked Products Refer to the CE Technical Data Sheets.

SEAL OF APPROVAL MUST BE VERIFIED IF THIS DOCUMENT HAS BEEN MODIFIED

Nullifire

Nullifire FS709-PS2



APPROVAL:

ETA 17/0388

Tested pipe types and max. Ø of the pipes

Look at the table in this detail

FS709-PS2

Fire class; Look at the table in this detail

Additional information ETA-approval/ Annex A.

Technical installation instructions need to be followed installing the products.

The max. seal size of 1200 mm wide by 1800 mm high

Min. 100 mm to edge of seal and between services

The max. cross section of services 60 %.

The min. permitted separation between pipes of 65 mm

U/C = (Uncapped/Capped)

Services	Seal components	Fire class
PEX pipe, up to Ø28mm / 2.6mm wall	25 x 10mm Nullifire FS709 flush to both faces	EI 60 U/C

THE CONTENTS OF THE DRAWING

Pipe penetration seal with 2x50mm thick Nullifire FB750 in a flexible or rigid wall, back to back

DESIGNER

REV

DATE

27.9.2018

SCALE

Not scaled

DETAIL MARK

FS709-PS2

Nullifire has provided this specification on the basis of the data and information given to Nullifire by the customer, the Nullifire product information and level of technical knowledge this specification relates to is expected to provide the level of fire performance, should the proposed detail be subjected to the standardised fire resistance performance against which the judgment has been made.

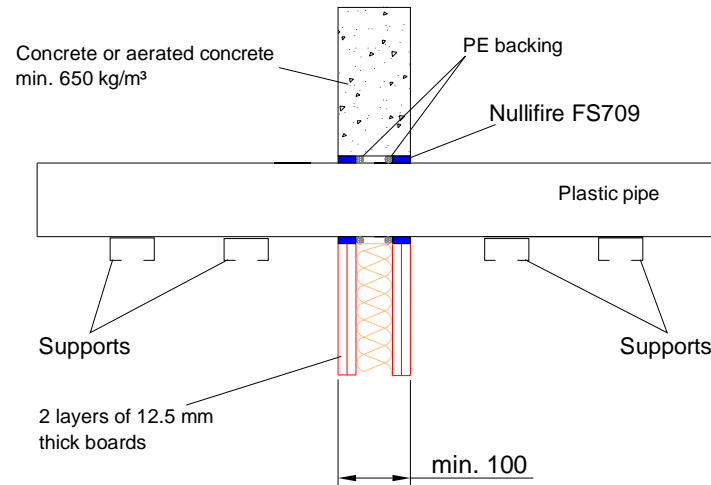
The accuracy of this specification relies on the following:

1. Only Nullifire products as defined in the specification are used.
2. The specific products are installed by a competent person, utilising Nullifire installation manual and data sheets noting limitations.
3. The proposed specification has been checked by the user.
4. For Details on CE Marked Products Refer to the CE Technical Data Sheets.

SEAL OF APPROVAL MUST BE VERIFIED IF THIS DOCUMENT HAS BEEN MODIFIED

Nullifire

Nullifire FS709-PS3



APPROVAL:

ETA 17/0388

Tested pipe types and max. Ø of the pipes

Look at the table in this detail

FS709-PS3

Fire class; Look at the attached table

Additional information ETA-approval/ Annex A.

Technical installation instructions need to be followed installing the products.

The max. seal size of 1200 mm wide by 1800 mm high

Min. 100 mm to edge of seal and between services

The max. cross section of services 60 %.

The min. permitted separation between pipes of 65 mm

U/C = (Uncapped/Capped)

EN1452-2
\$ EN12201 DIN 8074/8075
* BS 5391-1:2006

Services	Opening size	Seal structure	Fire class
uPVC# pipe, Ø40mm/1.9-3.0mm wall	Ø60mm	Nullifire FS709 10mm wide x 25mm deep on each face, backed with PE rod	EI 120 U/C
ABS* pipe, Ø90mm/6.0mm wall	Ø115mm	Nullifire FS709 12.5mm wide x 25mm deep on each face, backed with PE rod	
PE\$ pipe, Ø90mm/8.2 mm wall			
uPVC# pipe, Ø125mm/4.8–7.4mm wall	Ø157mm	Nullifire FS709 16mm wide x 25mm deep on each face, backed with PE rod	

THE CONTENTS OF THE DRAWING

uPVC and ABS pipe penetration seal in minimum 100mm thick walls

DESIGNER

REV

Nullifire has provided this specification on the basis of the data and information given to Nullifire by the customer, the Nullifire product information and level of technical knowledge this specification relates to is expected to provide the level of fire performance, should the proposed detail be subjected to the standardised fire resistance performance against which the judgment has been made.

The accuracy of this specification relies on the following:
1. Only Nullifire products as defined in the specification are used.
2. The specific products are installed by a competent person, utilising Nullifire installation manual and data sheets noting limitations.
3. The proposed specification has been checked by the user.
4. For Details on CE Marked Products Refer to the CE Technical Data Sheets.

SEAL OF APPROVAL MUST BE VERIFIED IF THIS DOCUMENT HAS BEEN MODIFIED

DATE

27.9.2018

SCALE

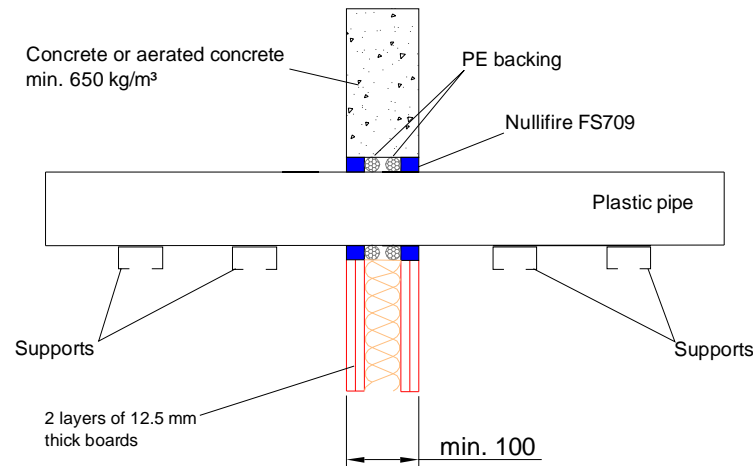
Not scaled

DETAIL MARK

FS709-PS3

Nullifire

Nullifire **FS709-PS4a**



APPROVAL:

ETA 17/0388

Tested pipe types and max. Ø of the pipes

Look at the table in this detail

FS709-PS4a

Fire class; Look at the attached table

Additional information ETA-approval/ Annex A.

Technical installation instructions need to be followed installing the products.

The max. seal size of 1200 mm wide by 1800 mm high

Min. 100 mm to edge of seal and between services

The max. cross section of services 60 %.

The min. permitted separation between pipes of 65 mm

U/C = (Uncapped/Capped)

Services	Opening size	Fire class	Seal structure
Copper pipe, Ø15mm/0.7mm wall	Ø55mm	EI90 C/U	Nullifire FS709 20mm wide x 25mm deep on each face, backed with PE rod
PEX pipe, Ø28mm/2.0 mm wall	Ø62mm	EI120 U/C	
ABS pipe, Ø40mm/7.2mm wall	Ø80mm		
ABS* pipe, Ø110mm/11.2mm wall	Ø150mm	EI60 U/C	
ABS* pipe, Ø114mm/6.4mm wall		EI90 U/C	

* BS 5391-1:2006

THE CONTENTS OF THE DRAWING

Copper, PEX and ABS pipe penetration seal in minimum 100mm thick walls

DESIGNER

REV

DATE

27.9.2018

SCALE

Not scaled

DETAIL MARK

FS709-PS4a

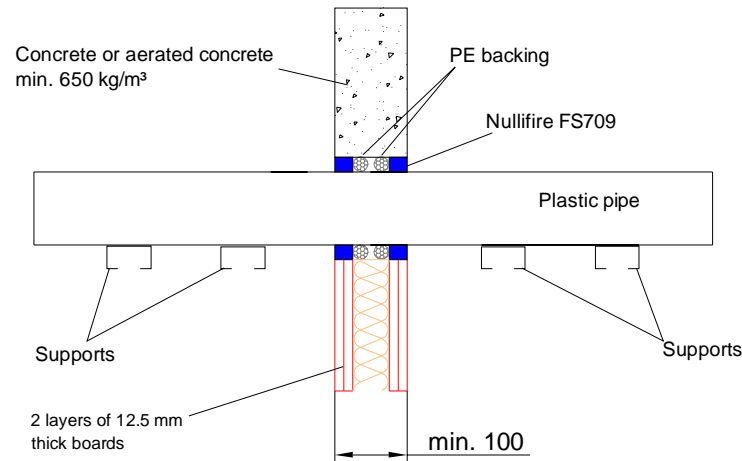
Nullifire has provided this specification on the basis of the data and information given to Nullifire by the customer, the Nullifire product information and level of technical knowledge this specification relates to is expected to provide the level of fire performance, should the proposed detail be subjected to the standardised fire resistance performance against which the judgment has been made.

The accuracy of this specification relies on the following:
1. Only Nullifire products as defined in the specification are used.
2. The specific products are installed by a competent person, utilising Nullifire installation manual and data sheets noting limitations.
3. The proposed specification has been checked by the user.
4. For Details on CE Marked Products Refer to the CE Technical Data Sheets.

SEAL OF APPROVAL MUST BE VERIFIED IF THIS DOCUMENT HAS BEEN MODIFIED

Nullifire

Nullifire **FS709-PS4b**



APPROVAL:

ETA 17/0388

Tested pipe types and max. Ø of the pipes

Look at the table in this detail

FS709-PS4b

Fire class; Look at the attached table

Additional information ETA-approval/ Annex A.

Technical installation instructions need to be followed installing the products.

The max. seal size of 1200 mm wide by 1800 mm high

Min. 100 mm to edge of seal and between services

The max. cross section of services 60 %.

The min. permitted separation between pipes of 65 mm

U/C = (Uncapped/Capped)

EN1452-2

\$ EN12201 DIN 8074/8075

Services	Opening size	Fire class	Seal structure
uPVC# pipe, Ø40mm/1.9mm wall	Ø80mm	E120 U/C	Nullifire FS709 20mm wide x 25mm deep on each face, backed with PE rod
uPVC# pipe, Ø110mm/3.2mm wall	Ø150mm	E120 U/C	
uPVC# pipe, Ø125mm/8.2mm wall	Ø165mm	E120 U/C	
PE pipe\$ Ø40mm/3.7mm wall	Ø80mm	E120 U/C	
PE pipe\$ Ø90mm/8.2mm wall	Ø130mm	E120 U/C	
PE pipe\$ Ø110mm/3.4mm wall	Ø150mm	E120 U/C	
PE pipe\$ Ø110mm/6.3mm wall		E120 U/C	
PE pipe\$ Ø110mm/6.6mm wall		E120 U/C	

THE CONTENTS OF THE DRAWING

uPVC nad PE pipe penetration seal in minimun 100mm thick walls

DESIGNER

REV

Nullifire has provided this specification on the basis of the data and information given to Nullifire by the customer, the Nullifire product information and level of technical knowledge this specification relates to is expected to provide the level of fire performance, should the proposed detail be subjected to the standardised fire resistance performance against which the judgment has been made.

The accuracy of this specification relies on the following:
1. Only Nullifire products as defined in the specification are used.
2. The specific products are installed by a competent person, utilising Nullifire installation manual and data sheets noting limitations.
3. The proposed specification has been checked by the user.
4. For Details on CE Marked Products Refer to the CE Technical Data Sheets.

SEAL OF APPROVAL MUST BE VERIFIED IF THIS DOCUMENT HAS BEEN MODIFIED

DATE

27.9.2018

SCALE

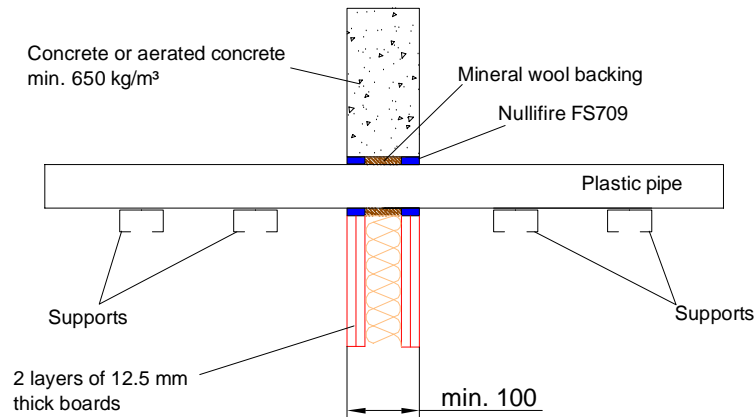
Not scaled

DETAIL MARK

FS709-PS4b

Nullifire

Nullifire **FS709-PS5**



APPROVAL:

ETA 17/0388

Tested pipe types and max. Ø of the pipes
Look at the table in this detail

FS709-PS5

Fire class; Look at the attached table

Additional information ETA-approval/ Annex A.

Technical installation instructions need to be followed installing the products.

The max. seal size of 1200 mm wide by 1800 mm high

Min. 100 mm to edge of seal and between services

The max. cross section of services 60 %.

The min. permitted separation between pipes of 65 mm

U/C = (Uncapped/Capped)

\$ EN12201 DIN 8074/8075

Services	Opening size	Seal structure	Fire class
PE\$ pipe, Ø63mm / 5.8 mm wall	600x140 mm	Nullifire FS709, 25mm deep on each face, backed with 50 mm thick tightly packed stone wool (33kg/m³)	E190 U/C
Pipe in pipe – Copper Ø15mm / 0.7mm in PE\$ Ø63mm / 5.8mm			

THE CONTENTS OF THE DRAWING

PE-pipe and pipe in pipe penetration seal in minimum 100mm thick walls

DESIGNER

REV

DATE

27.9.2018

SCALE

Not scaled

DETAIL MARK

FS709-PS5

Nullifire has provided this specification on the basis of the data and information given to Nullifire by the customer, the Nullifire product information and level of technical knowledge this specification relates to is expected to provide the level of fire performance, should the proposed detail be subjected to the standardised fire resistance performance against which the judgment has been made.

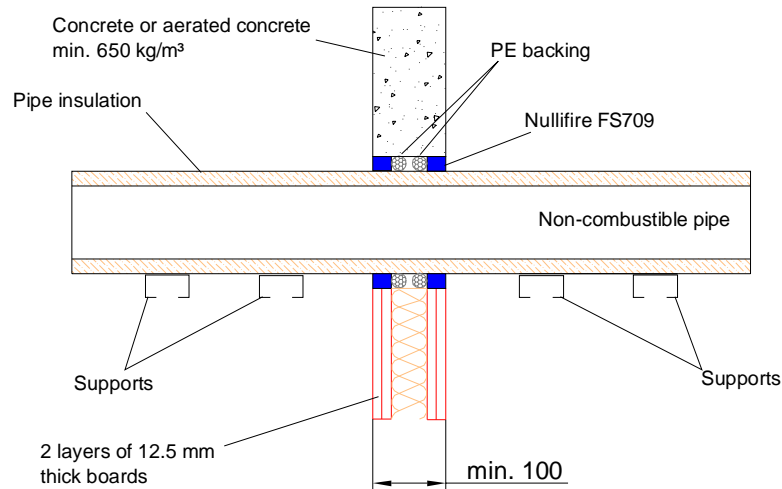
The accuracy of this specification relies on the following:

1. Only Nullifire products as defined in the specification are used.
2. The specific products are installed by a competent person, utilising Nullifire installation manual and data sheets noting limitations.
3. The proposed specification has been checked by the user.
4. For Details on CE Marked Products Refer to the CE Technical Data Sheets.

SEAL OF APPROVAL MUST BE VERIFIED IF THIS DOCUMENT HAS BEEN MODIFIED

Nullifire

Nullifire **FS709-PS6**



APPROVAL:

ETA 17/0388

Tested pipe types and max. Ø of the pipes

Look at the table in this detail

FS709-PS6

Fire class; Look at the attached table

Additional information ETA-approval/ Annex A.

Technical installation instructions need to be followed installing the products.

The max. seal size of 1200 mm wide by 1800 mm high

Min. 100 mm to edge of seal and between services

The max. cross section of services 60 %.

The min. permitted separation between pipes of 65 mm

U/C = (Uncapped/Capped)

Services	Opening size	Seal structure	Fire class
Copper pipe, Ø160mm / 2mm wall, insulated with 30mm foil face glass wool CS	Ø 260 mm	Nullifire FS709 20mm x 25mm deep on each face, backed with PE rod	E190 C/U

CS – Continuous Sustained

THE CONTENTS OF THE DRAWING

Copper pipe, Ø160mm penetration seal in minimum 100mm thick walls

DESIGNER

REV

DATE

27.9.2018

SCALE

Not scaled

DETAIL MARK

FS709-PS6

Nullifire has provided this specification on the basis of the data and information given to Nullifire by the customer, the Nullifire product information and level of technical knowledge this specification relates to is expected to provide the level of fire performance, should the proposed detail be subjected to the standardised fire resistance performance against which the judgment has been made.

The accuracy of this specification relies on the following:

1. Only Nullifire products as defined in the specification are used.
2. The specific products are installed by a competent person, utilising Nullifire installation manual and data sheets noting limitations.
3. The proposed specification has been checked by the user.
4. For Details on CE Marked Products Refer to the CE Technical Data Sheets.

SEAL OF APPROVAL MUST BE VERIFIED IF THIS DOCUMENT HAS BEEN MODIFIED

Nullifire