

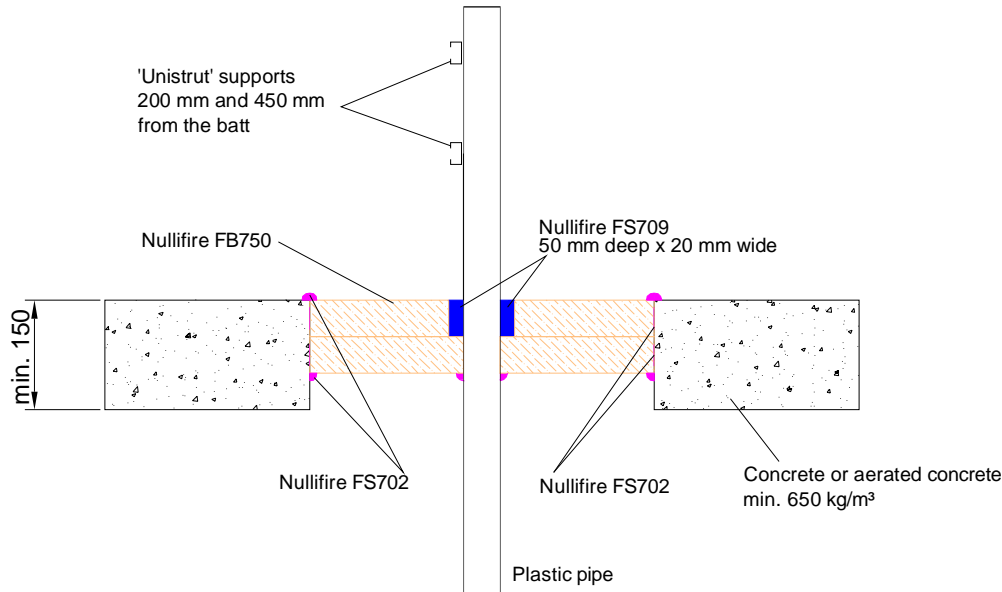
Nullifire Technical Drawings

FB750 Coated Batts Pipe Penetrations Through Floors

Table of Contents

- ▶ PVC- and PE-pipe penetrating through a flexible or rigid wall construction (FB750-PL1a)
- ▶ ABS- and PP-pipe penetrating through a flexible or rigid wall construction (FB750-PL1b)
- ▶ PVC pipes penetrating through a rigid floor construction (FB750-PL2a)
- ▶ PE pipes penetrating through a rigid floor construction (FB750-PL2b)
- ▶ PP pipes penetrating through a rigid floor construction (FB750-PL2c)
- ▶ ABS pipes penetrating through a rigid floor construction (FB750-PL2d)
- ▶ Continuous sustained steel pipe Ø220mm penetrating through a rigid floor construction (FB750-PL3)
- ▶ Steel pipe Ø220mm penetrating through a rigid floor construction (FB750-PL4)
- ▶ Steel pipe Ø220mm penetrating through a rigid floor construction with 2x50mm FB750 (FB750-PL5)

Nullifire FB750-PL1a



APPROVAL:

ETA 17/0392

Tested pipe types and max. Ø of the pipes
Look at the table in this detail

FB750-PL1a

Fire class; Look at the table in this detail

Additional information ETA-approval/ Annex A.

Technical installation instructions need to be followed installing the products.

The max. seal size of 600 x 600 mm

Min. 110 mm to edge of seal and between services

The max. cross section of services 60 %

The min. permitted separation between pipes of 145 mm

U/C = (Uncapped/Capped)

Services	Fire class	Seal construction
PVC pipe# up to Ø40mm/1.9mm wall	EI60 U/C	20mm wide x 50mm deep Nullifire FS709 installed from the top face
PVC pipe# up to Ø90mm/5.4mm wall		
PVC pipe# up to Ø125mm/4.8-7.4mm wall		
PE pipe\$ up to Ø40mm/3.7m wall		
PE pipe\$ up to Ø90mm/8.2mm wall		
PE pipe\$ up to Ø110mm/3.4-6.6mm wall		

EN1452-2

\$ EN12201 DIN 8074/8075

THE CONTENTS OF THE DRAWING

PVC- and PE-pipe penetrating through a flexible or rigid wall construction

DESIGNER

REV

Nullifire has provided this specification on the basis of the data and information given to Nullifire by the customer, the Nullifire product information and level of technical knowledge this specification relates to is expected to provide the level of fire performance, should the proposed detail be subjected to the standardised fire resistance performance against which the judgment has been made.

The accuracy of this specification relies on the following:

1. Only Nullifire products as defined in the specification are used.
2. The specific products are installed by a competent person, utilising Nullifire installation manual and data sheets noting limitations.
3. The proposed specification has been checked by the user.
4. For Details on CE Marked Products Refer to the CE Technical Data Sheets.

SEAL OF APPROVAL MUST BE VERIFIED IF THIS DOCUMENT HAS BEEN MODIFIED

DATE

28.9.2018

SCALE

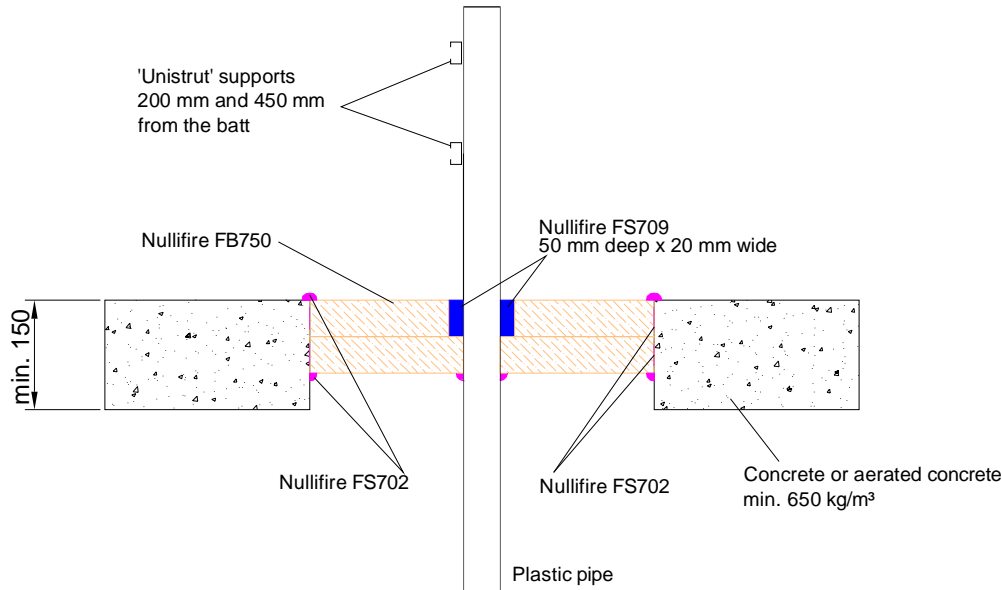
Not scaled

DETAIL MARK

FB750-PL1a

Nullifire

Nullifire FB750-PL1b



APPROVAL:

ETA 17/0392

Tested pipe types and max. Ø of the pipes
Look at the table in this detail

FB750-PL1b

Fire class; Look at the table in this detail

Additional information ETA-approval/ Annex A.

Technical installation instructions need to be followed installing the products.

The max. seal size of 600 x 600 mm

Min. 110 mm to edge of seal and between services

The max. cross section of services 60 %.

The min. permitted separation between pipes of 145 mm

U/C = (Uncapped/Capped)

Services	Fire class	Seal construction
ABS* pipe Ø40mm/2.7mm wall	EI60 U/C	20mm wide x 50mm deep Nullifire FS709 installed from the top face
ABS* pipe Ø90mm/6.0-11.2mm wall		
ABS* pipe Ø114mm/7.3-11.2mm wall		
PP pipe@ up to Ø40mm/1.8mm wall		
PP pipe@ up to Ø90mm/8.2mm wall		
PP pipe@ up to Ø110mm/10mm wall	EI20 U/C	
PP pipe@ Ø110mm/2.7mm wall		

* BS 5391-1:2006
@ ISO 15494 DIN 8077/8078

THE CONTENTS OF THE DRAWING

ABS- and PP-pipe penetrating through a flexible or rigid wall construction

DESIGNER

REV

Nullifire has provided this specification on the basis of the data and information given to Nullifire by the customer, the Nullifire product information and level of technical knowledge this specification relates to is expected to provide the level of fire performance, should the proposed detail be subjected to the standardised fire resistance performance against which the judgment has been made.

The accuracy of this specification relies on the following:
1. Only Nullifire products as defined in the specification are used.
2. The specific products are installed by a competent person, utilising Nullifire installation manual and data sheets noting limitations.
3. The proposed specification has been checked by the user.
4. For Details on CE Marked Products Refer to the CE Technical Data Sheets.

SEAL OF APPROVAL MUST BE VERIFIED IF THIS DOCUMENT HAS BEEN MODIFIED

DATE

28.9.2018

SCALE

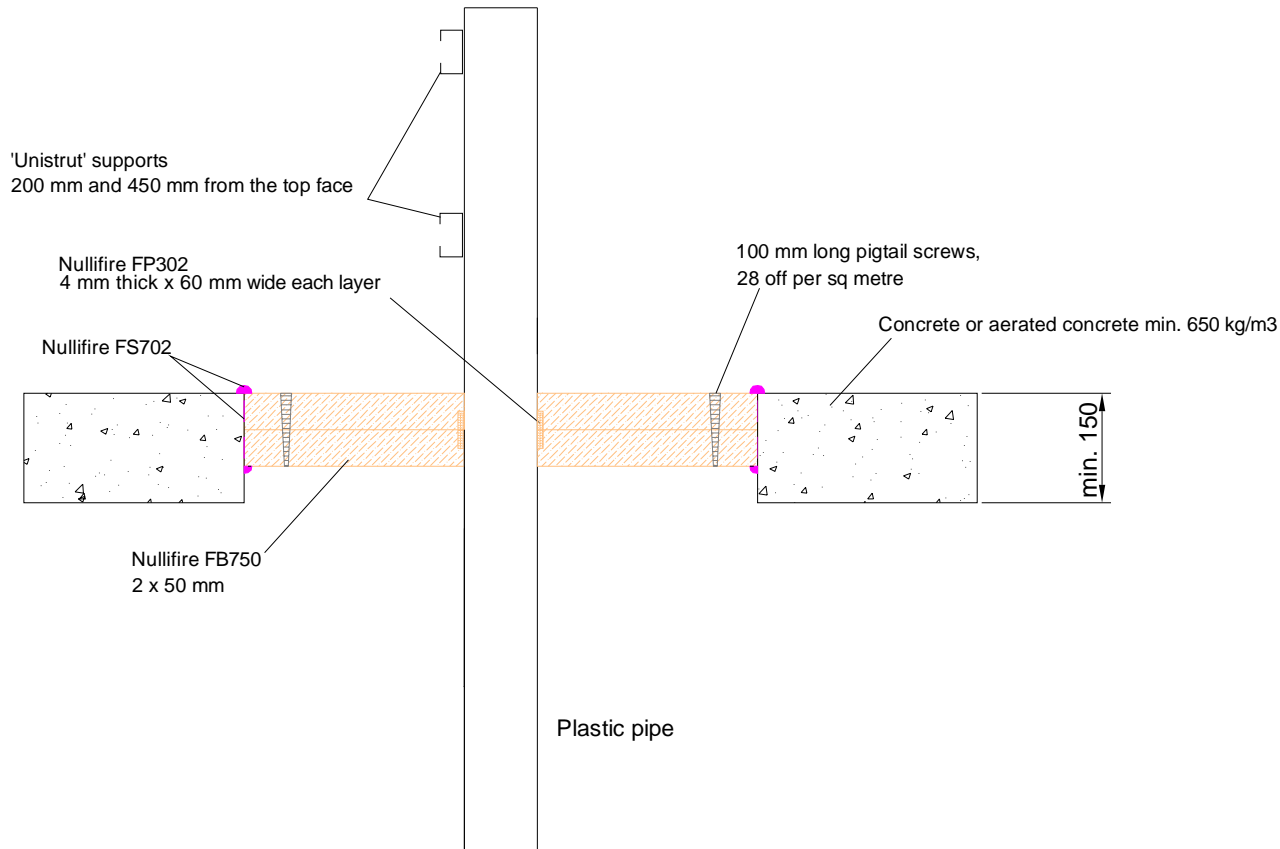
Not scaled

DETAIL MARK

FB750-PL1b

Nullifire

Nullifire FB750-PL2a



APPROVAL:

ETA 17/0391

Tested pipe types and max. Ø of the pipes
Look at the table in this detail

FB750-PL2a

Fire class; Look at the table in this detail

Additional information ETA-approval/ Annex A.

Technical installation instructions need to be followed installing the products.

The max. batt seal opening size of 600 x 600 mm

U/C = (Uncapped/Capped)

Services	Seal specification	Fire class
PVC# pipe up to Ø40mm/1.9mm wall	1 x layer of Nullifire FP302 60 x 4mm installed at mid-depth	EI60 U/C
PVC# pipe up to Ø82mm/3.4-5.4mm wall	2 x layers of Nullifire FP302 60 x 4mm installed at mid-depth	
PVC# pipe up to Ø90mm/5.4mm wall	3 x layers of Nullifire FP302 60 x 4mm installed at mid-depth	

#EN 1452-2

THE CONTENTS OF THE DRAWING

PVC pipes penetrating through a rigid floor construction

DESIGNER

REV

DATE

28.9.2018

SCALE

Not scaled

DETAIL MARK

FB750-PL2a

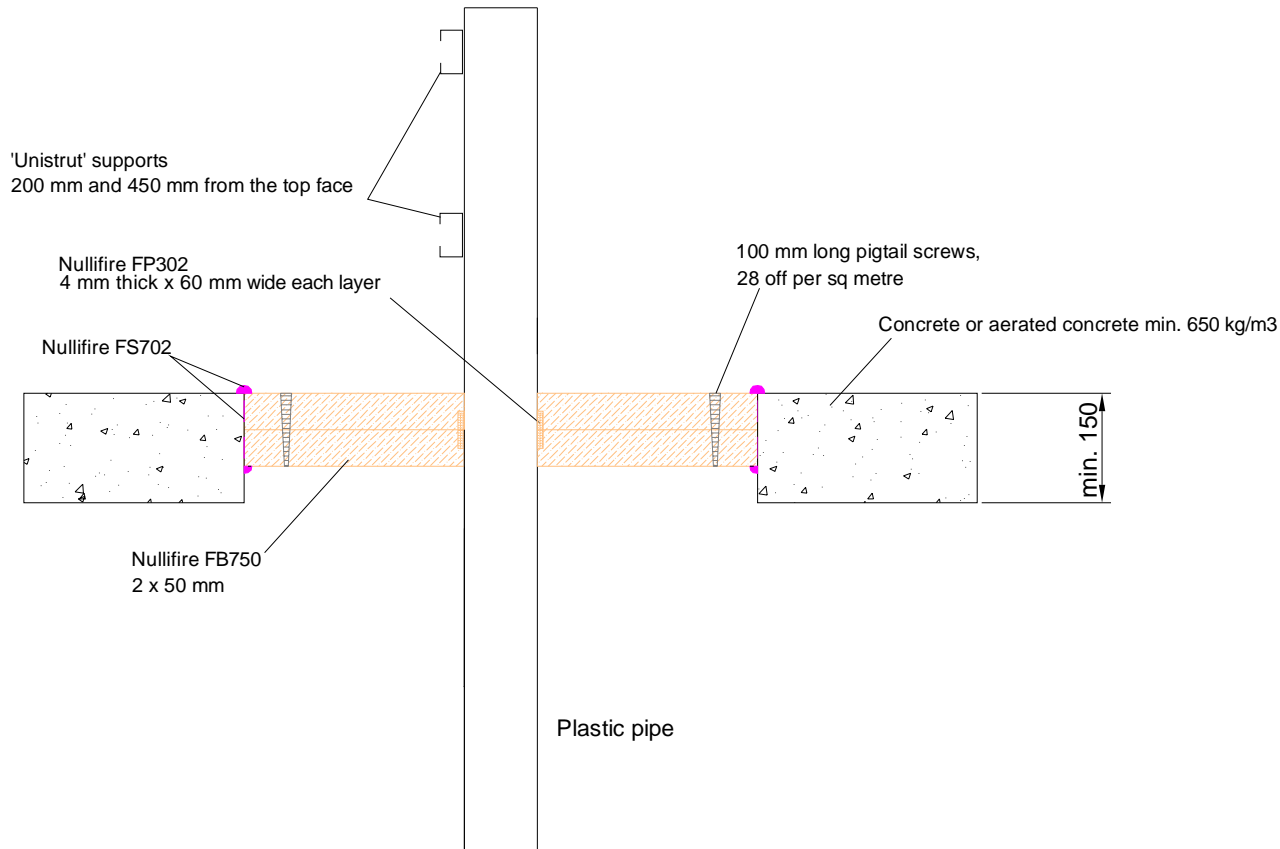
Nullifire has provided this specification on the basis of the data and information given to Nullifire by the customer, the Nullifire product information and level of technical knowledge this specification relates to is expected to provide the level of fire performance, should the proposed detail be subjected to the standardised fire resistance performance against which the judgment has been made.

The accuracy of this specification relies on the following:
1. Only Nullifire products as defined in the specification are used.
2. The specific products are installed by a competent person, utilising Nullifire installation manual and data sheets noting limitations.
3. The proposed specification has been checked by the user.
4. For Details on CE Marked Products Refer to the CE Technical Data Sheets.

SEAL OF APPROVAL MUST BE VERIFIED IF THIS DOCUMENT HAS BEEN MODIFIED

Nullifire

Nullifire FB750-PL2b



APPROVAL:

ETA 17/0391

Tested pipe types and max. Ø of the pipes
Look at the table in this detail

FB750-PL2b

Fire class; Look at the table in this detail

Additional information ETA-approval/ Annex A.

Technical installation instructions need to be followed installing the products.

The max. batt seal opening size of 600 x 600 mm

U/C = (Uncapped/Capped)

Services	Seal specification	Fire class
PE\$ pipe up to Ø40mm/3.7mm wall	1 x layer of Nullifire FP302 60 x 4mm installed at mid-depth	E160 U/C
PE\$ pipe up to Ø75mm/3.6-6.6mm wall	2 x layers of Nullifire FP302 60 x 4mm installed at mid-depth	
PE\$ pipe up to Ø90mm/8.2mm wall	3 x layers of Nullifire FP302 60 x 4mm installed at mid-depth	

\$ EN12201 DIN 8074/8075

THE CONTENTS OF THE DRAWING

PE pipes penetrating through a rigid floor construction

DESIGNER

REV

DATE

28.9.2018

SCALE

Not scaled

DETAIL MARK

FB750-PL2b

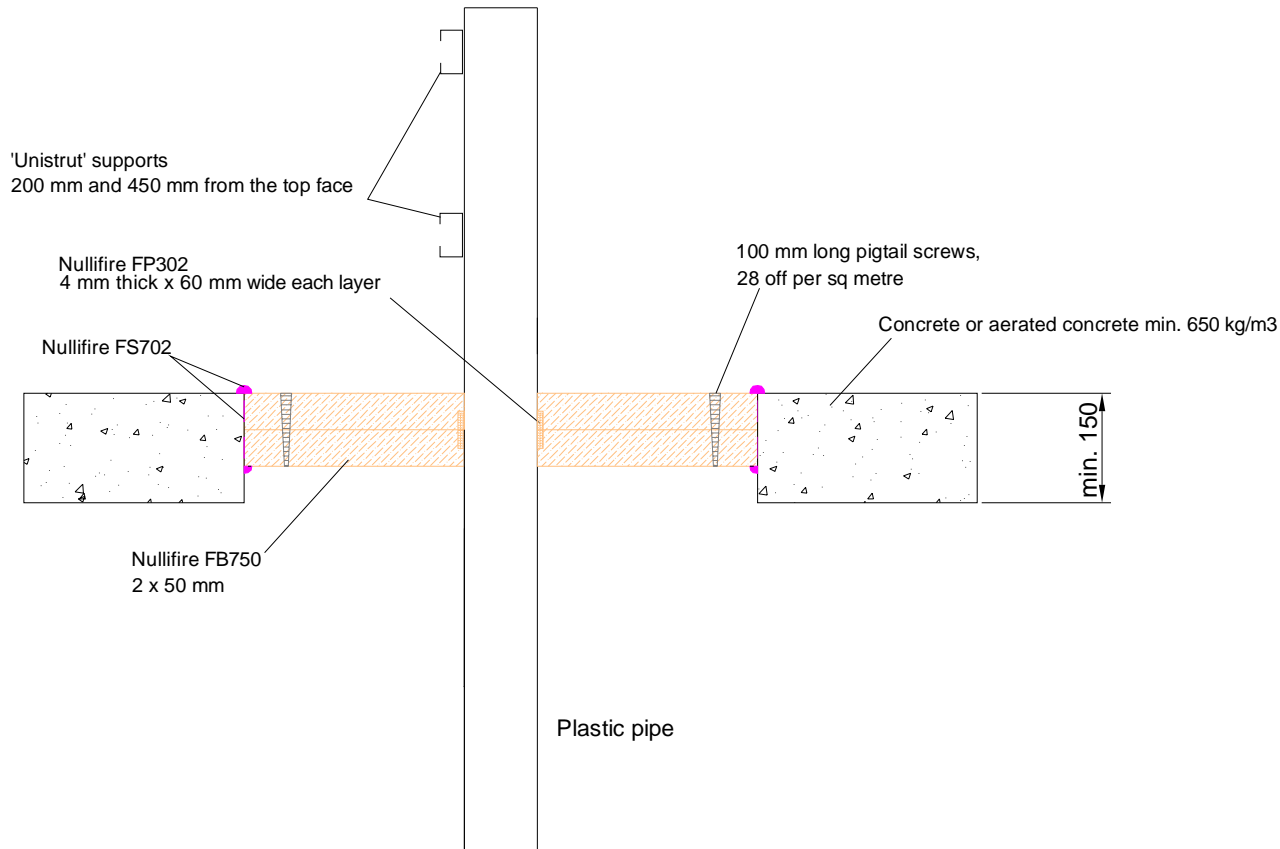
Nullifire has provided this specification on the basis of the data and information given to Nullifire by the customer, the Nullifire product information and level of technical knowledge this specification relates to is expected to provide the level of fire performance, should the proposed detail be subjected to the standardised fire resistance performance against which the judgment has been made.

The accuracy of this specification relies on the following:
1. Only Nullifire products as defined in the specification are used.
2. The specific products are installed by a competent person, utilising Nullifire installation manual and data sheets noting limitations.
3. The proposed specification has been checked by the user.
4. For Details on CE Marked Products Refer to the CE Technical Data Sheets.

SEAL OF APPROVAL MUST BE VERIFIED IF THIS DOCUMENT HAS BEEN MODIFIED

Nullifire

Nullifire FB750-PL2c



APPROVAL:

ETA 17/0391

Tested pipe types and max. Ø of the pipes
Look at the table in this detail

FB750-PL2c

Fire class; Look at the table in this detail

Additional information ETA-approval/ Annex A.

Technical installation instructions need to be followed installing the products.

The max. batt seal opening size of 600 x 600 mm

U/C = (Uncapped/Capped)

Services	Seal specification	Fire class
PP@ pipe up to Ø40mm/1.8mm wall	1 x layer of Nullifire FP302 60 x 4mm installed at mid-depth	E160 U/C
PP@ pipe up to Ø75mm/2.2-8.2mm wall	2 x layers of Nullifire FP302 60 x 4mm installed at mid-depth	
PP@ pipe up to Ø90mm/8.2mm wall	3 x layers of Nullifire FP302 60 x 4mm installed at mid-depth	

@ ISO 15494 DIN 8077/8078

THE CONTENTS OF THE DRAWING

PP pipes penetrating through a rigid floor construction

DESIGNER

REV

DATE

28.9.2018

SCALE

Not scaled

DETAIL MARK

FB750-PL2c

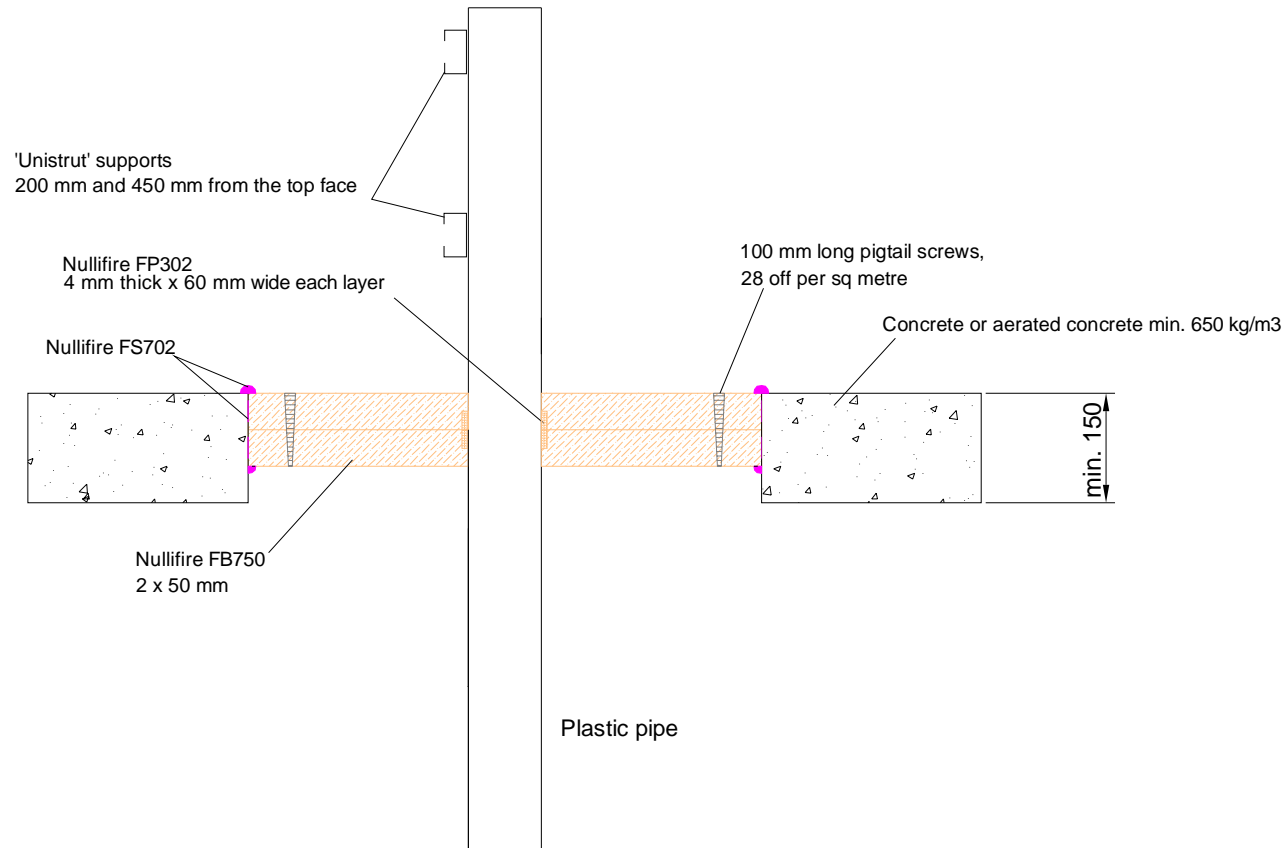
Nullifire has provided this specification on the basis of the data and information given to Nullifire by the customer, the Nullifire product information and level of technical knowledge this specification relates to is expected to provide the level of fire performance, should the proposed detail be subjected to the standardised fire resistance performance against which the judgment has been made.

The accuracy of this specification relies on the following:
1. Only Nullifire products as defined in the specification are used.
2. The specific products are installed by a competent person, utilising Nullifire installation manual and data sheets noting limitations.
3. The proposed specification has been checked by the user.
4. For Details on CE Marked Products Refer to the CE Technical Data Sheets.

SEAL OF APPROVAL MUST BE VERIFIED IF THIS DOCUMENT HAS BEEN MODIFIED

Nullifire

Nullifire FB750-PL2d



APPROVAL:

ETA 17/0391

Tested pipe types and max. Ø of the pipes

Look at the table in this detail

FB750-PL2d

Fire class; Look at the table in this detail

Additional information ETA-approval/ Annex A.

Technical installation instructions need to be followed installing the products.

The max. batt seal opening size of 600 x 600 mm

U/C = (Uncapped/Capped)

Services	Seal specification	Fire class
ABS* pipe up to Ø40mm/2.7mm wall	1 x layer of Nullifire FP302 60 x 4mm installed at mid-depth	E160 U/C
ABS* pipe up to Ø90mm/6.0-11.2mm wall	2 x layers of Nullifire FP302 60 x 4mm installed at mid-depth	
ABS* pipe up to Ø115mm/7.3-11.2mm wall	3 x layers of Nullifire FP302 60 x 4mm installed at mid-depth	

* BS 5391-1:2006

THE CONTENTS OF THE DRAWING

ABS pipes penetrating through a rigid floor construction

DESIGNER

REV

Nullifire has provided this specification on the basis of the data and information given to Nullifire by the customer, the Nullifire product information and level of technical knowledge this specification relates to is expected to provide the level of fire performance, should the proposed detail be subjected to the standardised fire resistance performance against which the judgment has been made.

The accuracy of this specification relies on the following:
 1. Only Nullifire products as defined in the specification are used.
 2. The specific products are installed by a competent person, utilising Nullifire installation manual and data sheets noting limitations.
 3. The proposed specification has been checked by the user.
 4. For Details on CE Marked Products Refer to the CE Technical Data Sheets.

SEAL OF APPROVAL MUST BE VERIFIED IF THIS DOCUMENT HAS BEEN MODIFIED

DATE

28.9.2018

SCALE

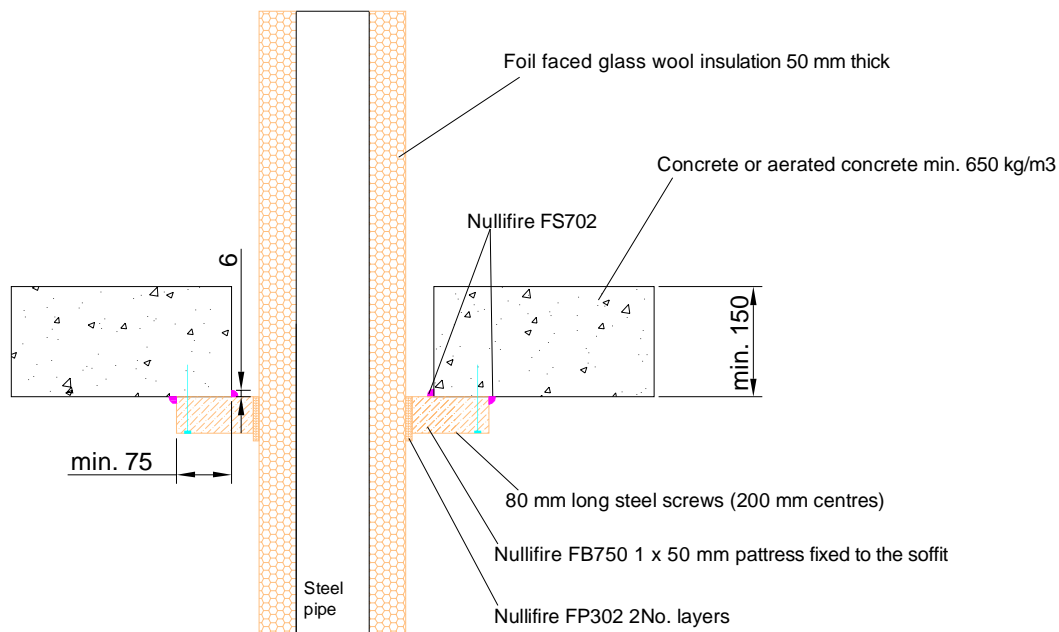
Not scaled

DETAIL MARK

FB750-PL2d

Nullifire

Nullifire **FB750-PL3**



APPROVAL:

ETA 17/0391

Tested pipe types and max. Ø of the pipes
Look at the table in this detail

FB750-PL3

Fire class; Look at the table in this detail

Additional information ETA-approval/ Annex A.

Technical installation instructions need to be followed installing the products.

The max. batt seal opening size
Ø50 mm and floor opening of
400 x 400 mm

U/C = (Uncapped/Capped)

Services	Seal specification	Fire class
Steel pipe Ø220mm / 6.0-14.2mm wall, insulated with Foil faced glass wool insulation 50mm thick CS	2No. layers 4 x 60 mm Nullifire FP302	EI45 C/U

CS - Continuous sustained

THE CONTENTS OF THE DRAWING

Continuous sustained steel pipe Ø220mm
penetrating through a rigid floor construction

DESIGNER

REV

DATE

28.9.2018

SCALE

Not scaled

DETAIL MARK

FB750-PL3

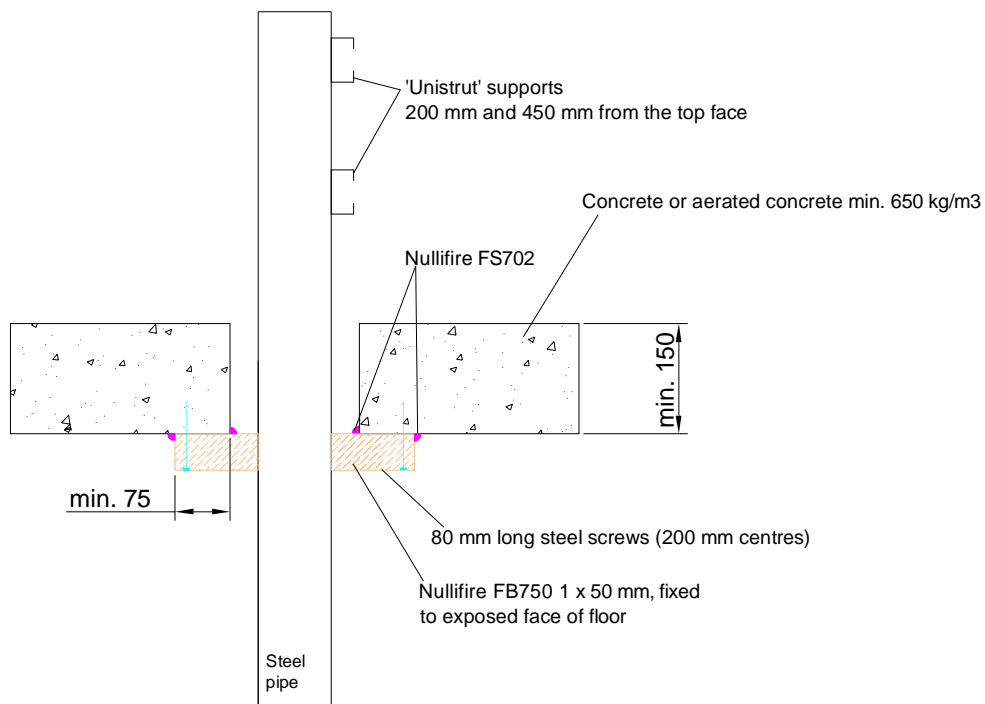
Nullifire has provided this specification on the basis of the data and information given to Nullifire by the customer, the Nullifire product information and level of technical knowledge this specification relates to is expected to provide the level of fire performance, should the proposed detail be subjected to the standardised fire resistance performance against which the judgment has been made.

The accuracy of this specification relies on the following:
1. Only Nullifire products as defined in the specification are used.
2. The specific products are installed by a competent person, utilising Nullifire installation manual and data sheets noting limitations.
3. The proposed specification has been checked by the user.
4. For Details on CE Marked Products Refer to the CE Technical Data Sheets.

SEAL OF APPROVAL MUST BE VERIFIED IF THIS DOCUMENT HAS BEEN MODIFIED

Nullifire

Nullifire **FB750-PL4**



APPROVAL:

ETA 17/0391

Tested pipe types and max. Ø of the pipes
Look at the table in this detail

FB750-PL4

Fire class; Look at the table in this detail

Additional information ETA-approval/ Annex A.

Technical installation instructions need to be followed installing the products.

The max. batt seal opening size
Ø50 mm and floor opening of
400 x 400 mm

U/C = (Uncapped/Capped)

Services	Seal specification	Fire class
Steel pipe Ø220mm / 6.9-14.2mm wall	None	E115 C/U

THE CONTENTS OF THE DRAWING

Steel pipe Ø220mm penetrating through a rigid floor construction

DESIGNER

REV

DATE

28.9.2018

SCALE

Not scaled

DETAIL MARK

FB750-PL4

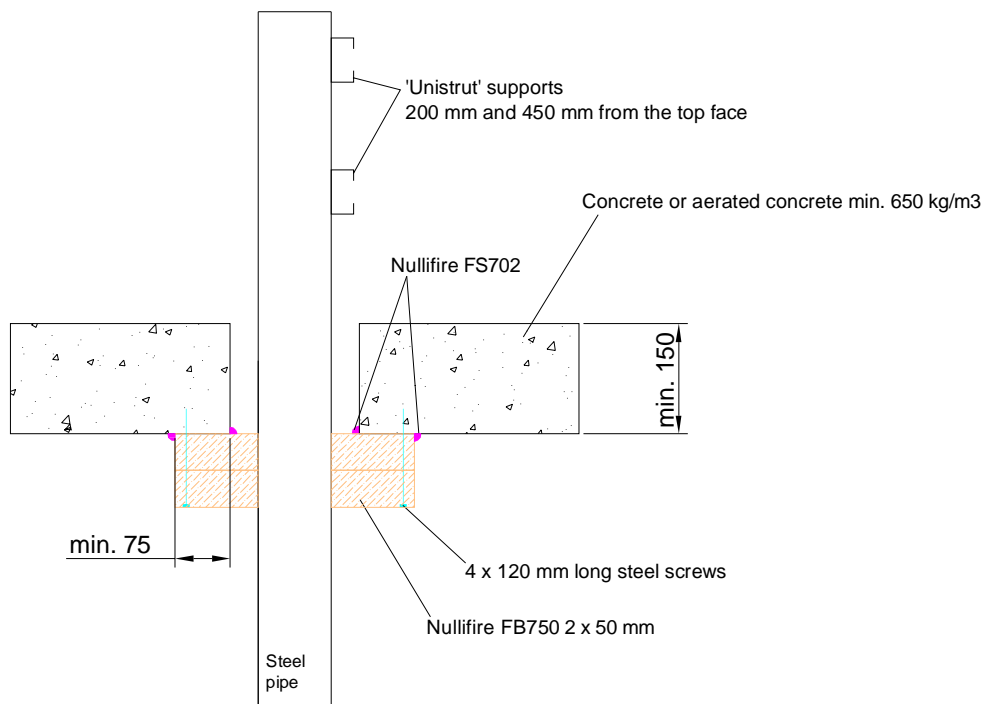
Nullifire has provided this specification on the basis of the data and information given to Nullifire by the customer, the Nullifire product information and level of technical knowledge this specification relates to is expected to provide the level of fire performance, should the proposed detail be subjected to the standardised fire resistance performance against which the judgment has been made.

The accuracy of this specification relies on the following:
1. Only Nullifire products as defined in the specification are used.
2. The specific products are installed by a competent person, utilising Nullifire installation manual and data sheets noting limitations.
3. The proposed specification has been checked by the user.
4. For Details on CE Marked Products Refer to the CE Technical Data Sheets.

SEAL OF APPROVAL MUST BE VERIFIED IF THIS DOCUMENT HAS BEEN MODIFIED

Nullifire

Nullifire **FB750-PL5**



APPROVAL:

ETA 17/0391

Tested pipe types and max. Ø of the pipes

Look at the table in this detail

FB750-PL5

Fire class; Look at the table in this detail

Additional information ETA-approval/ Annex A.

Technical installation instructions need to be followed installing the products.

The max. batt seal opening size of 650 x 400 mm

U/C = (Uncapped/Capped)

Services	Seal specification	Fire class
Steel pipe Ø160mm / 6.9-14.2mm wall	None	E160 C/U

THE CONTENTS OF THE DRAWING

Steel pipe Ø220mm penetrating through a rigid floor construction with 2x50mm FB750

DESIGNER

REV

DATE

28.9.2018

SCALE

Not scaled

DETAIL MARK

FB750-PL5

Nullifire has provided this specification on the basis of the data and information given to Nullifire by the customer, the Nullifire product information and level of technical knowledge this specification relates to is expected to provide the level of fire performance, should the proposed detail be subjected to the standardised fire resistance performance against which the judgment has been made.

The accuracy of this specification relies on the following:
1. Only Nullifire products as defined in the specification are used.
2. The specific products are installed by a competent person, utilising Nullifire installation manual and data sheets noting limitations.
3. The proposed specification has been checked by the user.
4. For Details on CE Marked Products Refer to the CE Technical Data Sheets.

SEAL OF APPROVAL MUST BE VERIFIED IF THIS DOCUMENT HAS BEEN MODIFIED

Nullifire