

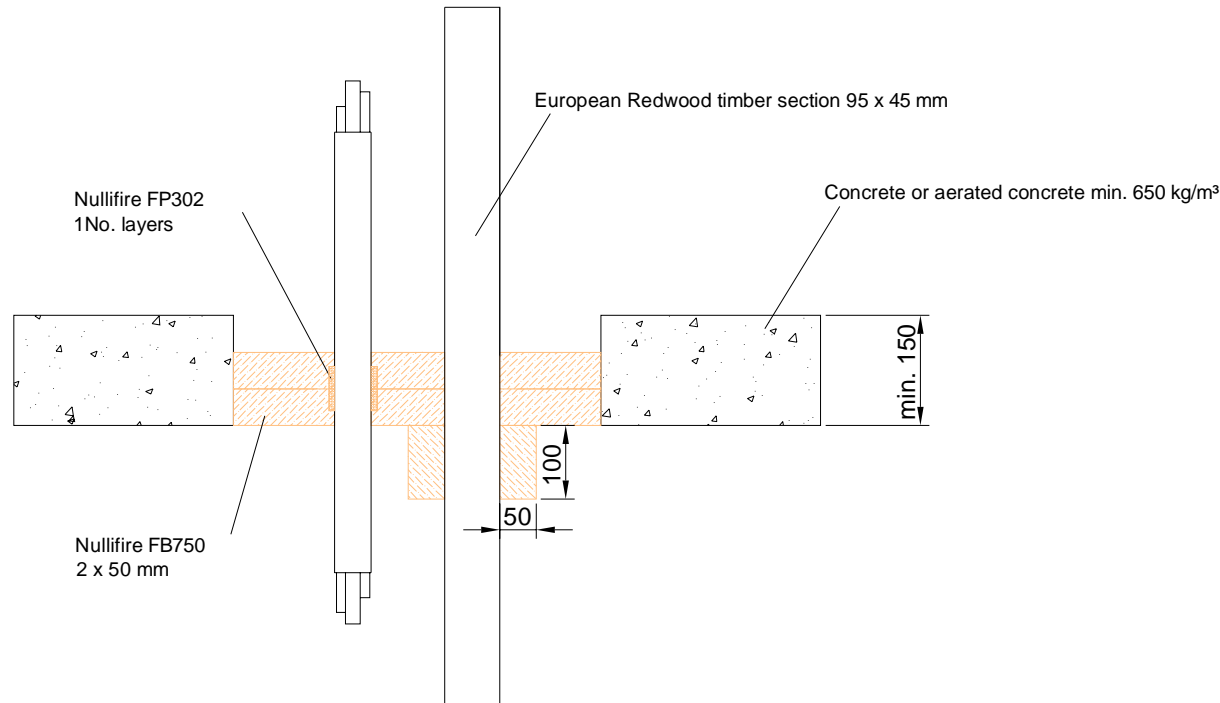
Nullifire Technical Drawings

FB750 Coated Batts Penetrations with Timber

Table of Contents

- ▶ Cables and timber penetrating through a rigid floor construction with 2x50mm FB750 (FB750-SPL5)
- ▶ Timber penetrating through a rigid floor construction with 2x50mm FB750 (FB750-ERTL1)

Nullifire FB750-SPL5



APPROVAL:

ETA 17/0391

**Tested cable and timber
types and max. Ø of the
cables**

Look at the table in this detail

FB750-SPL5

Fire class; Look at the table in
this detail

Additional information ETA-
approval/ Annex A.

Technical installation
instructions need to be followed
installing the products.

The max. batt seal opening size of
400 x 400 mm

U/C = (Uncapped/Capped)

Services	Seal specification	Fire class
ABS Ø55mm x 3.2mm wall thickness x 300mm long conduit containing 10 no. fire alarm cables and 5No. twin and earth cables	Nullifire FP302 1No. layer 60mm wide x 4mm thick at mid-depth	EI60 U/U
95mm x 45mm European Redwood timber section	100 mm long Nullifire FB750 cladding to the underside of the seal	EI180

THE CONTENTS OF THE DRAWING

**Cables and timber penetrating through a rigid floor
construction with 2x50mm FB750**

DESIGNER

REV

DATE

28.9.2018

SCALE

Not scaled

DETAIL MARK

FB750-SPL5

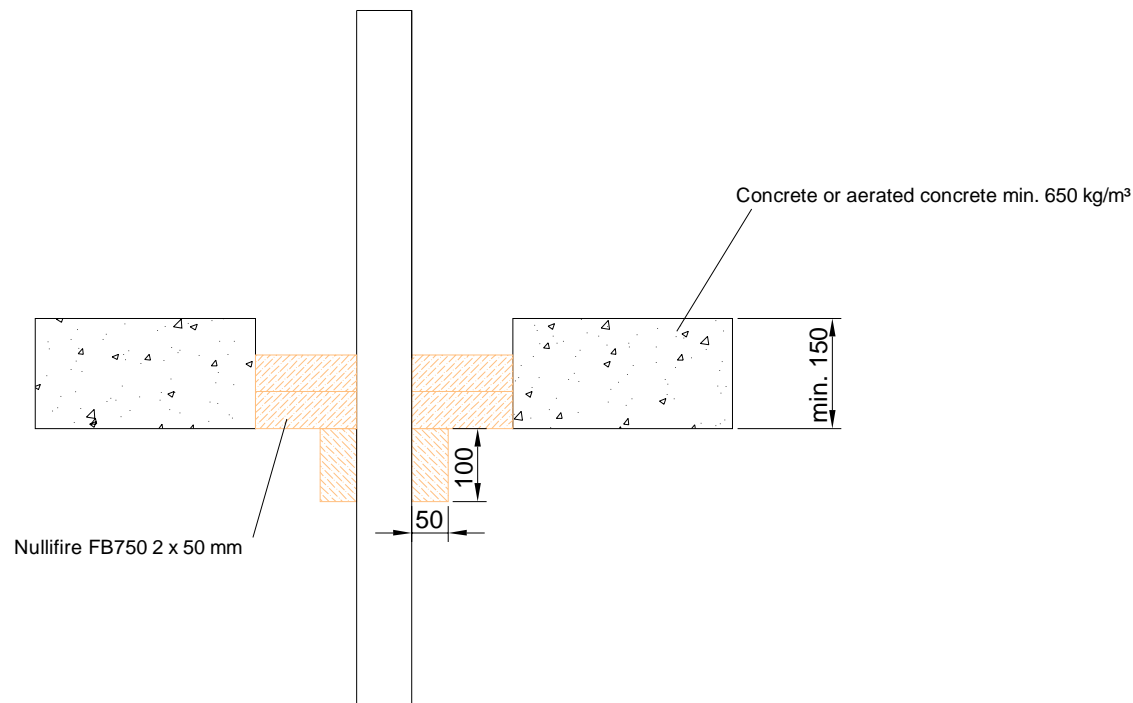
Nullifire has provided this specification on the basis of the data and information given to Nullifire by the customer, the Nullifire product information and level of technical knowledge this specification relates to is expected to provide the level of fire performance, should the proposed detail be subjected to the standardised fire resistance performance against which the judgment has been made.

The accuracy of this specification relies on the following:
1. Only Nullifire products as defined in the specification are used.
2. The specific products are installed by a competent person, utilising Nullifire installation manual and data sheets noting limitations.
3. The proposed specification has been checked by the user.
4. For Details on CE Marked Products Refer to the CE Technical Data Sheets.

SEAL OF APPROVAL MUST BE VERIFIED IF THIS DOCUMENT HAS BEEN MODIFIED

Nullifire

Nullifire **FB750-ERTL1**



APPROVAL:

ETA 17/0391

Tested timber type and size of the timber

Look at the table in this detail

FB750-ERTL1

Fire class; Look at the table in this detail

Additional information ETA-approval/ Annex A.

Technical installation instructions need to be followed installing the products.

The max. batt seal opening size of 400 x 400 mm

Services	Seal specification	Fire class
95mm x 45mm European Redwood timber section	100 mm long Nullifire FB750 cladding to the underside of the seal	EI180

THE CONTENTS OF THE DRAWING

Timber penetrating through a rigid floor construction with 2x50mm FB750

DESIGNER

REV

DATE

28.9.2018

SCALE

Not scaled

DETAIL MARK

FB750-ERTL1

Nullifire has provided this specification on the basis of the data and information given to Nullifire by the customer, the Nullifire product information and level of technical knowledge this specification relates to is expected to provide the level of fire performance, should the proposed detail be subjected to the standardised fire resistance performance against which the judgment has been made.

The accuracy of this specification relies on the following:

1. Only Nullifire products as defined in the specification are used.
2. The specific products are installed by a competent person, utilising Nullifire installation manual and data sheets noting limitations.
3. The proposed specification has been checked by the user.
4. For Details on CE Marked Products Refer to the CE Technical Data Sheets.

SEAL OF APPROVAL MUST BE VERIFIED IF THIS DOCUMENT HAS BEEN MODIFIED

Nullifire