

Nullifire Technical Drawings

FB750 Coated Batts Pipe Penetrations Through Walls

Table of Contents (1/3)

- ▶ Rectangular PVC pipe penetrating through a flexible (lined aperture) or rigid wall construction (FB750-PS1)
- ▶ Steel pipe penetrating through a flexible or rigid wall construction (FB750-PS2)
- ▶ Copper pipe penetrating through a flexible or rigid wall construction (FB750-PS3)
- ▶ PVC-U and PE- pipe penetrating through a flexible or rigid wall construction (FB750-PS4)
- ▶ Copper pipe penetrating through a flexible or rigid wall construction (FB750-PS5)
- ▶ Copper or steel pipe penetrating through a flexible or rigid wall construction (FB750-PS6)
- ▶ Steel pipe penetrating through a flexible or rigid wall construction (FB750-PS7)
- ▶ Copper pipe penetrating through a flexible or rigid wall construction (FB750-PS8)
- ▶ Copper pipe penetrating through a flexible or rigid wall construction FB750 (FB750-PS9)
- ▶ Continues on the next page..

Nullifire Technical Drawings

FB750 Coated Batts Pipe Penetrations Through Walls

Table of Contents (2/3)

- ▶ Copper pipe penetrating through a flexible or rigid wall construction (FB750-PS10)
- ▶ PVC-U and PE- pipe penetrating through a flexible or rigid wall construction (FB750-PS11)
- ▶ PVC square pipe penetrating through a flexible or rigid wall construction (FB750-PS12)
- ▶ Copper pipe penetrating through a flexible or rigid wall construction (FB750-PS13)
- ▶ PVC-U, PP or PE pipe penetrating through a flexible or rigid wall construction with FB750 pf (FB750-PS14a & FB750-PS14b)
- ▶ Copper pipe penetrating through a flexible or rigid wall construction (FB750-PS15)
- ▶ PEX pipe penetrating through a flexible or rigid wall construction (FB750-PS16)
- ▶ PVC-U, PP or PE pipe penetrating through a flexible or rigid wall construction with FB750 btob (FB750-PS17a & FB750-PS17b)
- ▶ Continues on the next page..

Nullifire Technical Drawings

FB750 Coated Batts Pipe Penetrations Through Walls

Table of Contents (3/3)

- ▶ PEX pipe penetrating through a flexible or rigid wall construction (FB750-PS18)
- ▶ Copper or steel pipe penetrating through a flexible or rigid wall construction (FB750-PS19)
- ▶ PVC-U, PP or PE pipe penetrating through a flexible or rigid wall construction (FB750-PS20a & FB750-PS20b)
- ▶ Copper or steel pipe penetrating through a flexible or rigid wall construction with 1x50mm FB750 (FB750-PS21)
- ▶ Copper or steel pipe penetrating through a flexible or rigid wall construction (FB750-PS22)

2 x 50 mm Nullifire FB750
30 mm air gap

Concrete, aerated concrete or masonry min. 650 kg/m³

Nullifire FS702

Nullifire FP160
245 mm x 115 mm

Plastic pipe

Supports

250

200

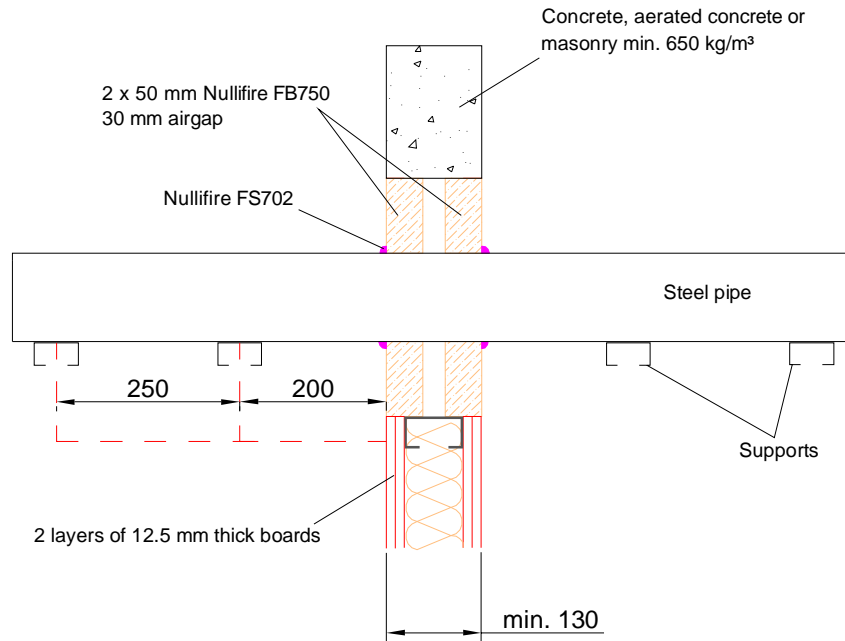
2 layers of 12.5 mm thick boards

min. 130

Additional information ETA-approval/ Annex A.

Nullifire

Nullifire **FB750-PS2**



APPROVAL:

ETA 17/0392

Tested pipe types and max. Ø of the pipes

Look at the table in this detail

FB750-PS2

Fire class; Look at the table in this detail

Additional information ETA-approval/ Annex A.

Technical installation instructions need to be followed installing the products.

The max. seal size of 1200 mm wide by 1800 mm high

U/C = (Uncapped/Capped)

Services	Fire class
Steel pipe, Ø220mm/ 8.5–14.2mm wall	EI 60 U/U

THE CONTENTS OF THE DRAWING

Steel pipe penetrating through a flexible or rigid wall construction

DESIGNER

REV

DATE

28.9.2018

SCALE

Not scaled

DETAIL MARK

FB750-PS2

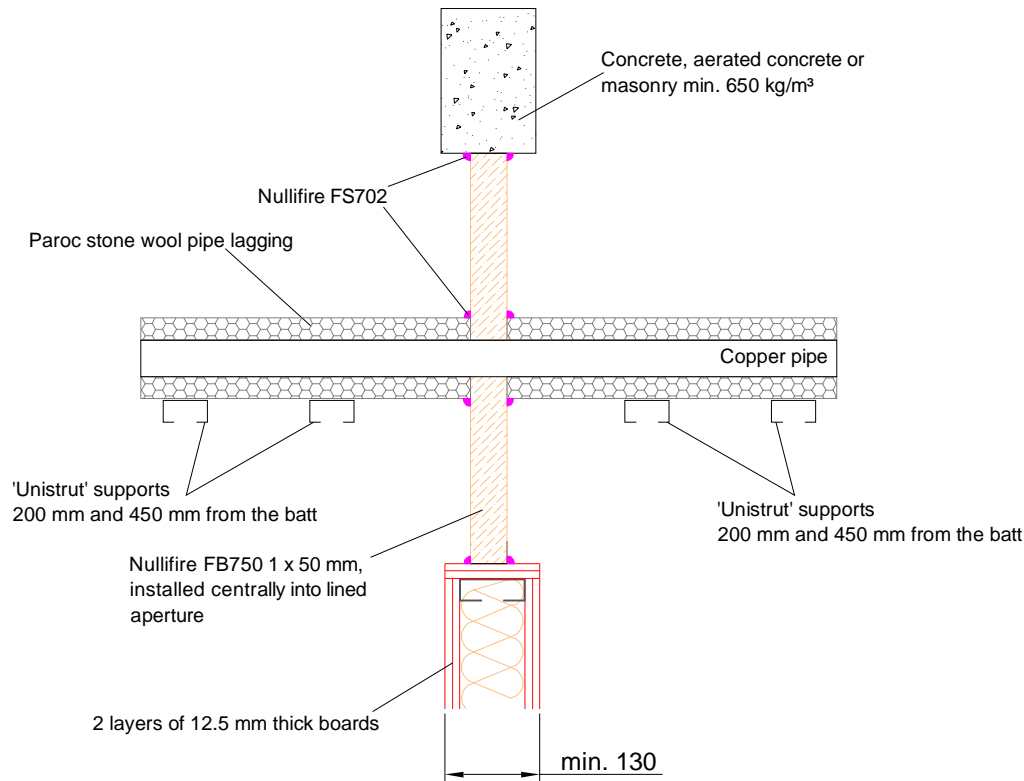
Nullifire has provided this specification on the basis of the data and information given to Nullifire by the customer, the Nullifire product information and level of technical knowledge this specification relates to is expected to provide the level of fire performance, should the proposed detail be subjected to the standardised fire resistance performance against which the judgment has been made.

The accuracy of this specification relies on the following:
1. Only Nullifire products as defined in the specification are used.
2. The specific products are installed by a competent person, utilising Nullifire installation manual and data sheets noting limitations.
3. The proposed specification has been checked by the user.
4. For Details on CE Marked Products Refer to the CE Technical Data Sheets.

SEAL OF APPROVAL MUST BE VERIFIED IF THIS DOCUMENT HAS BEEN MODIFIED

Nullifire

Nullifire FB750-PS3



APPROVAL:

ETA 17/0392

Tested pipe types and max. Ø of the pipes

Look at the table in this detail

FB750-PS3

Fire class; Look at the table in this detail

Additional information ETA-approval/ Annex A.

Technical installation instructions need to be followed installing the products.

The max. seal size of 1200 mm wide by 1800 mm high

U/C = (Uncapped/Capped)

Services	Seal structure	Fire class
Copper pipe Ø159mm / 2mm wall	30mm thick Paroc Stone wool pipe insulation CI	EI 60 C/U
Copper pipe Ø15mm / 1mm wall	40mm thick Paroc Stone wool pipe insulation CI	

CI – Continuous Interrupted

THE CONTENTS OF THE DRAWING

Copper pipe penetrating through a flexible or rigid wall construction

DESIGNER

REV

DATE

28.9.2018

SCALE

Not scaled

DETAIL MARK

FB750-PS3

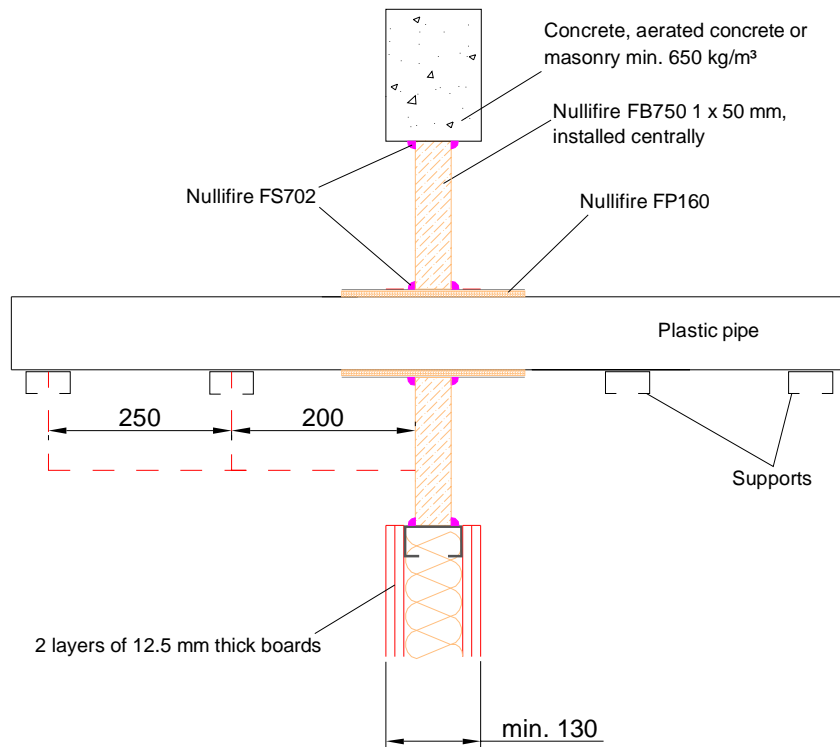
Nullifire has provided this specification on the basis of the data and information given to Nullifire by the customer, the Nullifire product information and level of technical knowledge this specification relates to is expected to provide the level of fire performance, should the proposed detail be subjected to the standardised fire resistance performance against which the judgment has been made.

The accuracy of this specification relies on the following:
1. Only Nullifire products as defined in the specification are used.
2. The specific products are installed by a competent person, utilising Nullifire installation manual and data sheets noting limitations.
3. The proposed specification has been checked by the user.
4. For Details on CE Marked Products Refer to the CE Technical Data Sheets.

SEAL OF APPROVAL MUST BE VERIFIED IF THIS DOCUMENT HAS BEEN MODIFIED

Nullifire

Nullifire FB750-PS4



APPROVAL:

ETA 17/0392

Tested pipe types and max. Ø of the pipes

Look at the table in this detail

FB750-PS4

Fire class; Look at the table in this detail

Additional information ETA-approval/ Annex A.

Technical installation instructions need to be followed installing the products.

The max. seal size of 1200 mm wide by 1800 mm high

U/C = (Uncapped/Capped)

* PVC-U pipe according to EN 1329-1, EN 1452-2 and EN 1453-1

\$ PE pipe according to EN 1519-1, EN 12201-2 and EN 1266-1

Services	Seal components	Fire class
PVC-U* pipes up to Ø55mm/ 3.2-7.2mm wall	Nullifire FP160 150mm long / 1 of 140x4mm intumescent layers	EI 60 U/C
PE\$ pipes up to Ø55mm/ 3.2-7.6mm wall		
PVC-U* pipes up to Ø90mm/ 3.4-7.8mm wall	Nullifire FP160 150mm long / 2 of 140x4mm intumescent layers	
PE\$ pipes up to Ø90mm/ 4.3-10.0mm wall		
PVC-U* pipes up to Ø125mm/3.6-8.4mm wall	Nullifire FP160 150mm long / 3 of 140x4mm intumescent layers	
PE\$ pipes up to Ø125mm/ 5.4-12.5mm wall		
PVC-U* pipes up to Ø160mm/3.8-9.0mm wall	Nullifire FP160 150mm long / 4 of 140x4mm intumescent layers	EI 60 U/C
PE\$ pipes up to Ø160mm/ 6.4-15.0mm wall		

THE CONTENTS OF THE DRAWING

PVC-U and PE- pipe penetrating through a flexible or rigid wall construction

DESIGNER

REV

DATE

28.9.2018

SCALE

Not scaled

DETAIL MARK

FB750-PS4

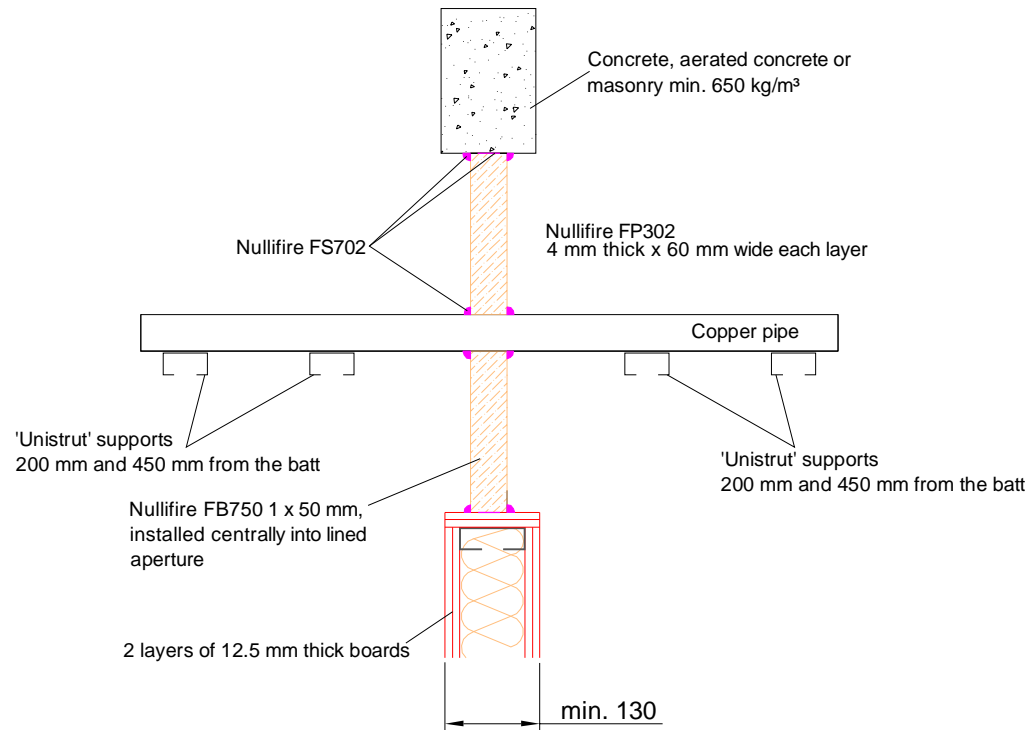
Nullifire has provided this specification on the basis of the data and information given to Nullifire by the customer, the Nullifire product information and level of technical knowledge this specification relates to is expected to provide the level of fire performance, should the proposed detail be subjected to the standardised fire resistance performance against which the judgment has been made.

The accuracy of this specification relies on the following:
1. Only Nullifire products as defined in the specification are used.
2. The specific products are installed by a competent person, utilising Nullifire installation manual and data sheets noting limitations.
3. The proposed specification has been checked by the user.
4. For Details on CE Marked Products Refer to the CE Technical Data Sheets.

SEAL OF APPROVAL MUST BE VERIFIED IF THIS DOCUMENT HAS BEEN MODIFIED

Nullifire

Nullifire **FB750-PS5**



APPROVAL:

ETA 17/0392

Tested pipe types and max. Ø of the pipes
Look at the table in this detail

FB750-PS5
Fire class; Look at the table in this detail

Additional information ETA-approval/ Annex A.

Technical installation instructions need to be followed installing the products.

The max. seal size of 1200 mm wide by 1800 mm high

U/C = (Uncapped/Capped)

Services	Seal structure	Fire class
Copper pipe Ø22mm / 1.0-14.2mm wall	None	EI120 C/U

THE CONTENTS OF THE DRAWING

Copper pipe penetrating through a flexible or rigid wall construction

DESIGNER

REV

DATE

28.9.2018

SCALE

Not scaled

DETAIL MARK

FB750-PS5

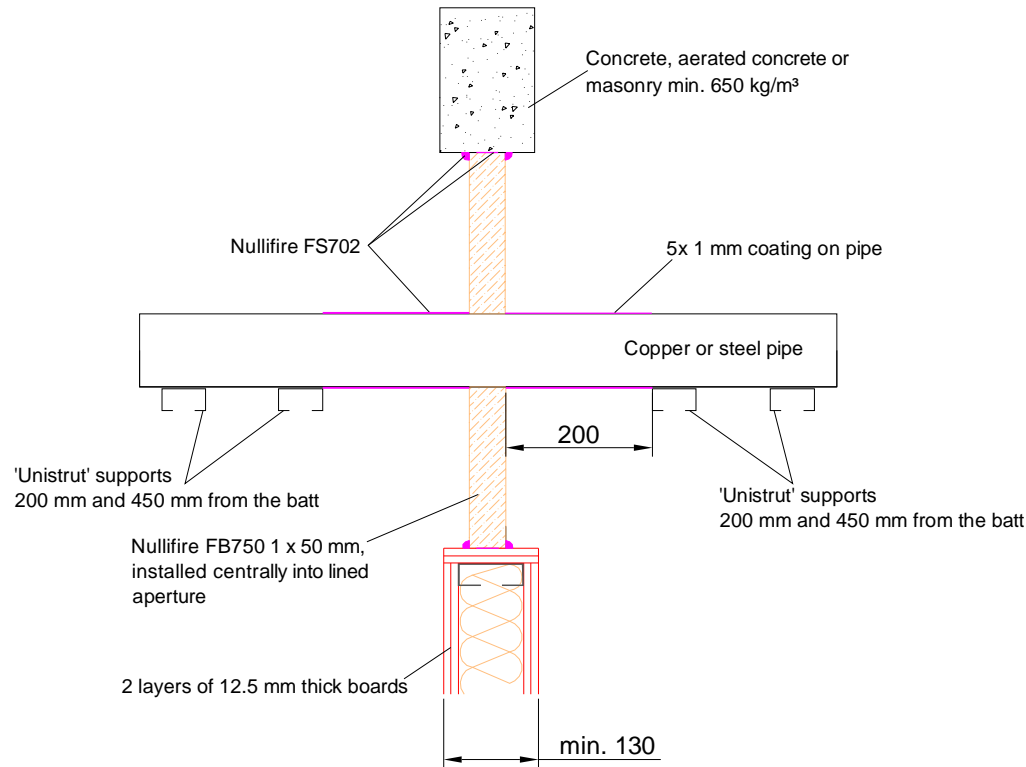
Nullifire has provided this specification on the basis of the data and information given to Nullifire by the customer, the Nullifire product information and level of technical knowledge this specification relates to is expected to provide the level of fire performance, should the proposed detail be subjected to the standardised fire resistance performance against which the judgment has been made.

The accuracy of this specification relies on the following:
1. Only Nullifire products as defined in the specification are used.
2. The specific products are installed by a competent person, utilising Nullifire installation manual and data sheets noting limitations.
3. The proposed specification has been checked by the user.
4. For Details on CE Marked Products Refer to the CE Technical Data Sheets.

SEAL OF APPROVAL MUST BE VERIFIED IF THIS DOCUMENT HAS BEEN MODIFIED

Nullifire

Nullifire FB750-PS6



APPROVAL:

ETA 17/0392

Tested pipe types and max. Ø of the pipes
Look at the table in this detail

FB750-PS6

Fire class; Look at the table in this detail

Additional information ETA-approval/ Annex A.

Technical installation instructions need to be followed installing the products.

The max. seal size of 1200 mm wide by 1800 mm high

U/C = (Uncapped/Capped)

Services	Fire class	Seal components
Copper pipe Ø22mm / 1.0-14.2mm wall	EI15 C/U	5x 1mm thick coating on pipe, 200mm along the pipe
Steel pipe Ø64mm / 3.0-14.2mm wall	EI45 C/U	
Steel pipe Ø90mm / 3.0-14.2mm wall	EI20 C/U	
Steel pipe Ø220mm / 6.0-14.2mm wall	EI45 C/U	

THE CONTENTS OF THE DRAWING

Copper or steel pipe penetrating through a flexible or rigid wall construction

DESIGNER

REV

DATE

28.9.2018

SCALE

Not scaled

DETAIL MARK

FB750-PS6

Nullifire has provided this specification on the basis of the data and information given to Nullifire by the customer, the Nullifire product information and level of technical knowledge this specification relates to is expected to provide the level of fire performance, should the proposed detail be subjected to the standardised fire resistance performance against which the judgment has been made.

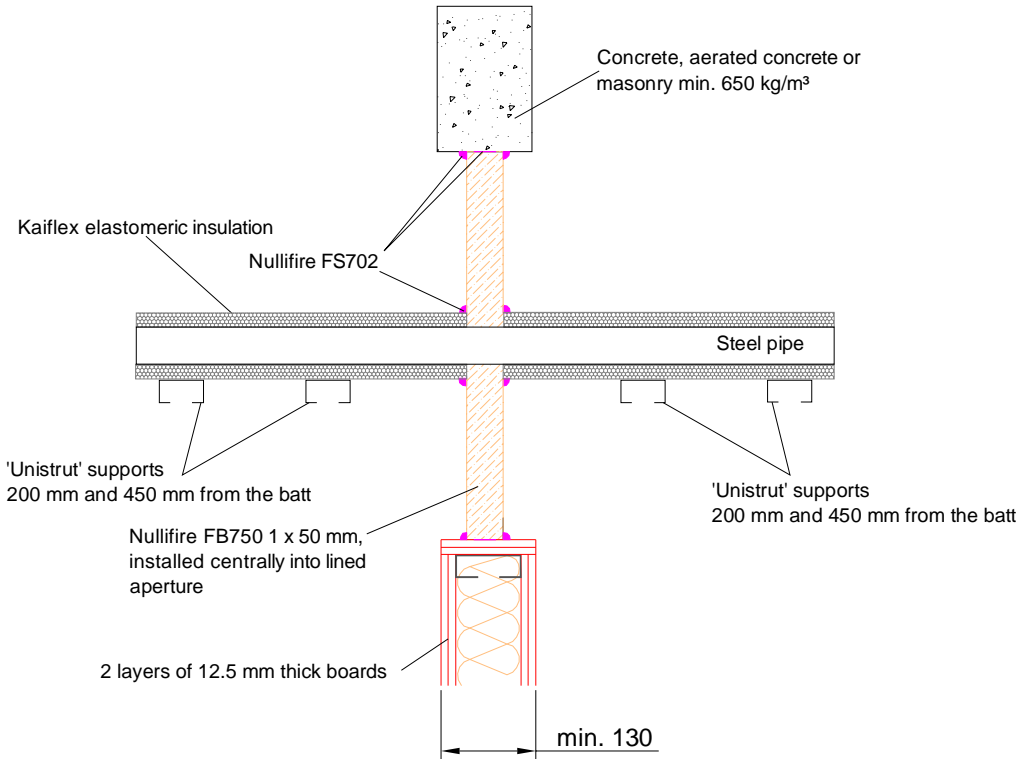
The accuracy of this specification relies on the following:

1. Only Nullifire products as defined in the specification are used.
2. The specific products are installed by a competent person, utilising Nullifire installation manual and data sheets noting limitations.
3. The proposed specification has been checked by the user.
4. For Details on CE Marked Products Refer to the CE Technical Data Sheets.

SEAL OF APPROVAL MUST BE VERIFIED IF THIS DOCUMENT HAS BEEN MODIFIED

Nullifire

Nullifire FB750-PS7



ETA 17/0392

Tested pipe types and max. Ø of the pipes
Look at the table in this detail

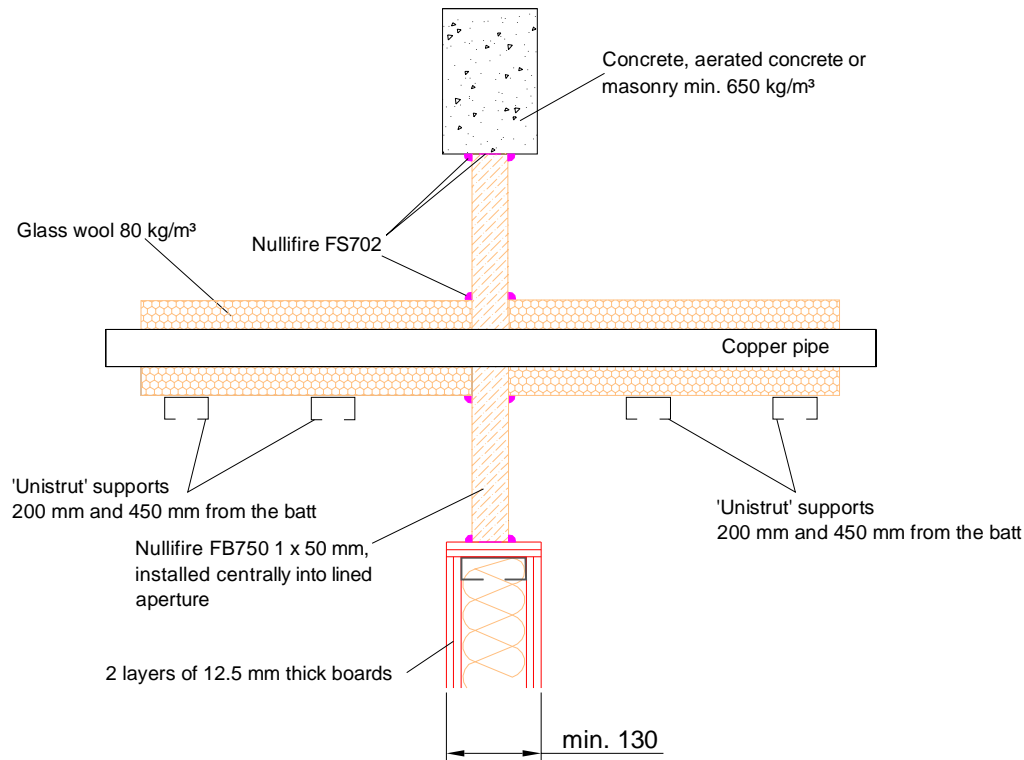
Fire class; Look at the table in this detail

Additional information ETA-approval/ Annex A.

Technical installation instructions need to be followed installing the products.

Nullifire

Nullifire **FB750-PS8**



APPROVAL:

ETA 17/0392

Tested pipe types and max. Ø of the pipes

Look at the table in this detail

FB750-PS8

Fire class; Look at the table in this detail

Additional information ETA-approval/ Annex A.

Technical installation instructions need to be followed installing the products.

The max. seal size of 1200 mm wide by 1800 mm high

U/C = (Uncapped/Capped)

Services	Seal components	Fire class
Copper pipe Ø22mm / 1.0-14.2mm wall	40mm thick glass wool insulation (80kg/m³) CI	EI60 C/U

CI – Continuous Interrupted

THE CONTENTS OF THE DRAWING

Copper pipe penetrating through a flexible or rigid wall construction

DESIGNER

REV

DATE

28.9.2018

SCALE

Not scaled

DETAIL MARK

FB750-PS8

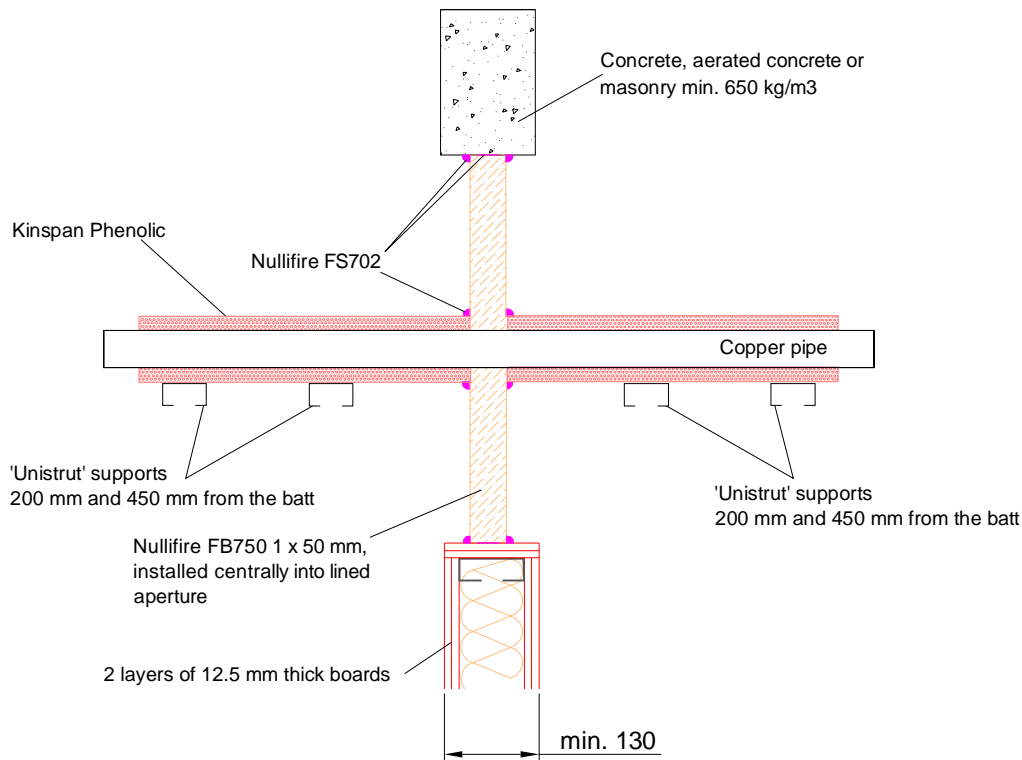
Nullifire has provided this specification on the basis of the data and information given to Nullifire by the customer, the Nullifire product information and level of technical knowledge this specification relates to is expected to provide the level of fire performance, should the proposed detail be subjected to the standardised fire resistance performance against which the judgment has been made.

The accuracy of this specification relies on the following:
1. Only Nullifire products as defined in the specification are used.
2. The specific products are installed by a competent person, utilising Nullifire installation manual and data sheets noting limitations.
3. The proposed specification has been checked by the user.
4. For Details on CE Marked Products Refer to the CE Technical Data Sheets.

SEAL OF APPROVAL MUST BE VERIFIED IF THIS DOCUMENT HAS BEEN MODIFIED

Nullifire

Nullifire FB750-PS9



APPROVAL:

ETA 17/0392

Tested pipe types and max. Ø of the pipes
Look at the table in this detail

FB750-PS9
Fire class; Look at the table in this detail

Additional information ETA-approval/ Annex A.

Technical installation instructions need to be followed installing the products.

The max. seal size of 1200 mm wide by 1800 mm high

U/C = (Uncapped/Capped)

Services	Seal components	Fire class
Copper pipe Ø22mm / 1.0-14.2mm wall	25mm thick Kingspan Phenolic insulation (37kg/m³) CI	EI60 C/U

CI – Continuous Interrupted

THE CONTENTS OF THE DRAWING

Copper pipe penetrating through a flexible or rigid wall construction

DESIGNER

REV

DATE

28.9.2018

SCALE

Not scaled

DETAIL MARK

FB750-PS9

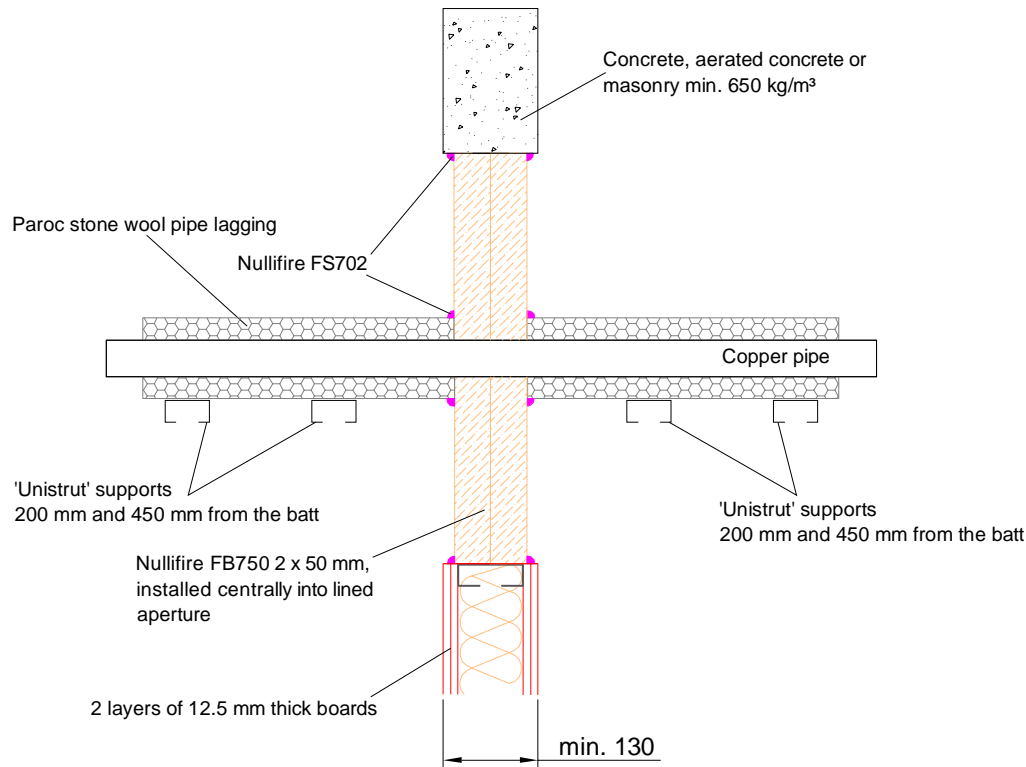
Nullifire has provided this specification on the basis of the data and information given to Nullifire by the customer, the Nullifire product information and level of technical knowledge this specification relates to is expected to provide the level of fire performance, should the proposed detail be subjected to the standardised fire resistance performance against which the judgment has been made.

The accuracy of this specification relies on the following:
1. Only Nullifire products as defined in the specification are used.
2. The specific products are installed by a competent person, utilising Nullifire installation manual and data sheets noting limitations.
3. The proposed specification has been checked by the user.
4. For Details on CE Marked Products Refer to the CE Technical Data Sheets.

SEAL OF APPROVAL MUST BE VERIFIED IF THIS DOCUMENT HAS BEEN MODIFIED

Nullifire

Nullifire **FB750-PS10**



APPROVAL:

ETA 17/0392

Tested pipe types and max. Ø of the pipes
Look at the table in this detail

FB750-PS10
Fire class; Look at the table in this detail

Additional information ETA-approval/ Annex A.

Technical installation instructions need to be followed installing the products.

The max. seal size of 1200 mm wide by 1800 mm high

U/C = (Uncapped/Capped)

Services	Seal structure	Fire class
Copper pipe Ø159mm / 2mm wall	30mm thick Paroc Stone wool pipe insulation CI	EI120 C/U
Copper pipe Ø15mm / 1mm wall	40mm thick Paroc Stone wool pipe insulation CI	

CI – Continuous Interrupted

THE CONTENTS OF THE DRAWING

Copper pipe penetrating through a flexible or rigid wall construction

DESIGNER

REV

DATE

28.9.2018

SCALE

Not scaled

DETAIL MARK

FB750-PS10

Nullifire has provided this specification on the basis of the data and information given to Nullifire by the customer, the Nullifire product information and level of technical knowledge this specification relates to is expected to provide the level of fire performance, should the proposed detail be subjected to the standardised fire resistance performance against which the judgment has been made.

The accuracy of this specification relies on the following:
1. Only Nullifire products as defined in the specification are used.
2. The specific products are installed by a competent person, utilising Nullifire installation manual and data sheets noting limitations.
3. The proposed specification has been checked by the user.
4. For Details on CE Marked Products Refer to the CE Technical Data Sheets.

SEAL OF APPROVAL MUST BE VERIFIED IF THIS DOCUMENT HAS BEEN MODIFIED

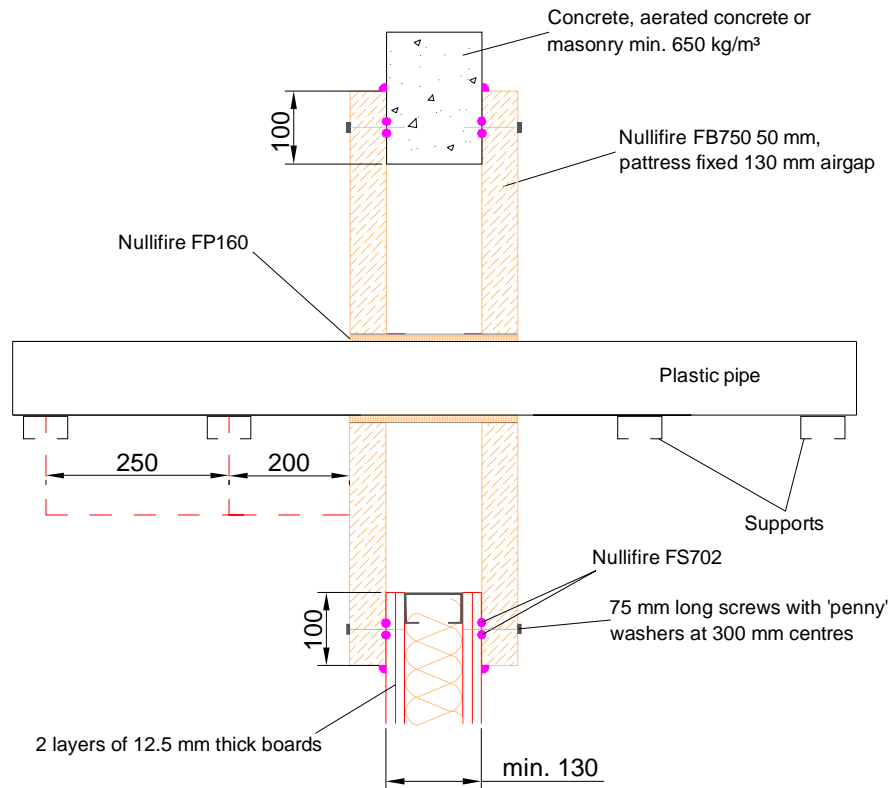
Nullifire

[illegible]

Technical installation instructions need to be followed installing the products.

Nullifire

Nullifire FB750-PS12



APPROVAL:

ETA 17/0392

Tested pipe types and max. Ø of the pipes
Look at the table in this detail

FB750-PS12
Fire class; Look at the table in this detail

Additional information ETA-approval/ Annex A.

Technical installation instructions need to be followed installing the products.

The max. seal size of 1200 mm wide by 1800 mm high

U/C = (Uncapped/Capped)

Services	Seal structure	Fire class
PVC-U* square pipe 204mm wide by 60mm high / 1.5mm wall	Nullifire FP160 250mm long x 230mm wide x 90mm high / 4 of 250 x 4mm intumescent layers	EI120 U/C

* PVC-U pipe according to EN 1329-1, EN 1452-2 and EN 1453-1

THE CONTENTS OF THE DRAWING

PVC square pipe penetrating through a flexible or rigid wall construction

DESIGNER

REV

DATE

28.9.2018

SCALE

Not scaled

DETAIL MARK

FB750-PS12

Nullifire has provided this specification on the basis of the data and information given to Nullifire by the customer, the Nullifire product information and level of technical knowledge this specification relates to is expected to provide the level of fire performance, should the proposed detail be subjected to the standardised fire resistance performance against which the judgment has been made.

The accuracy of this specification relies on the following:
1. Only Nullifire products as defined in the specification are used.
2. The specific products are installed by a competent person, utilising Nullifire installation manual and data sheets noting limitations.
3. The proposed specification has been checked by the user.
4. For Details on CE Marked Products Refer to the CE Technical Data Sheets.

SEAL OF APPROVAL MUST BE VERIFIED IF THIS DOCUMENT HAS BEEN MODIFIED

Nullifire

Concrete, aerated concrete or masonry min. 650 kg/m³

75 mm long screws with 'penny' washers at 300 mm centres

100

Nullfire FB750 50 mm, patress fixed 130 mm airgap

Copper pipe

'Unistrut' supports 200 mm and 450 mm from the batt

100

boards

Nullfire FS702

min. 130

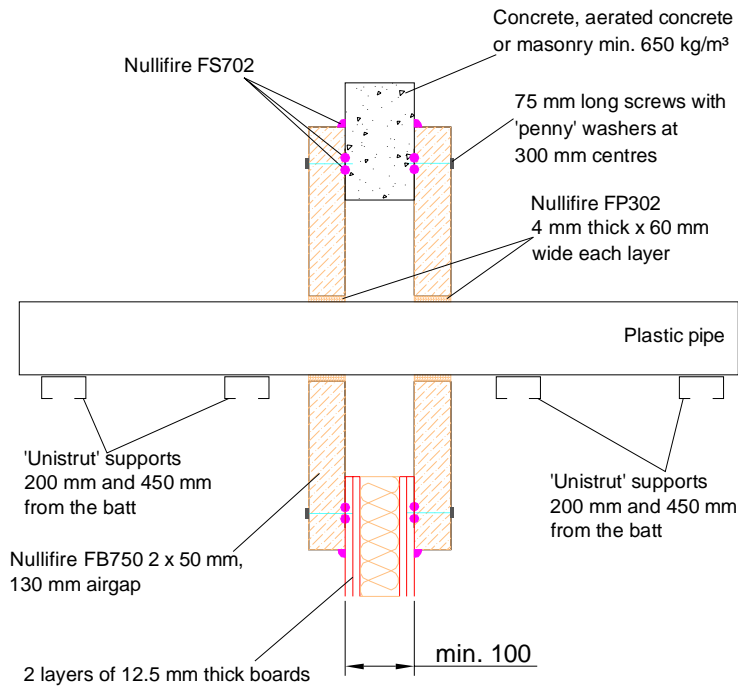
Additional information ETA-approval/ Annex A.

Technical installation instructions need to be followed installing the products.

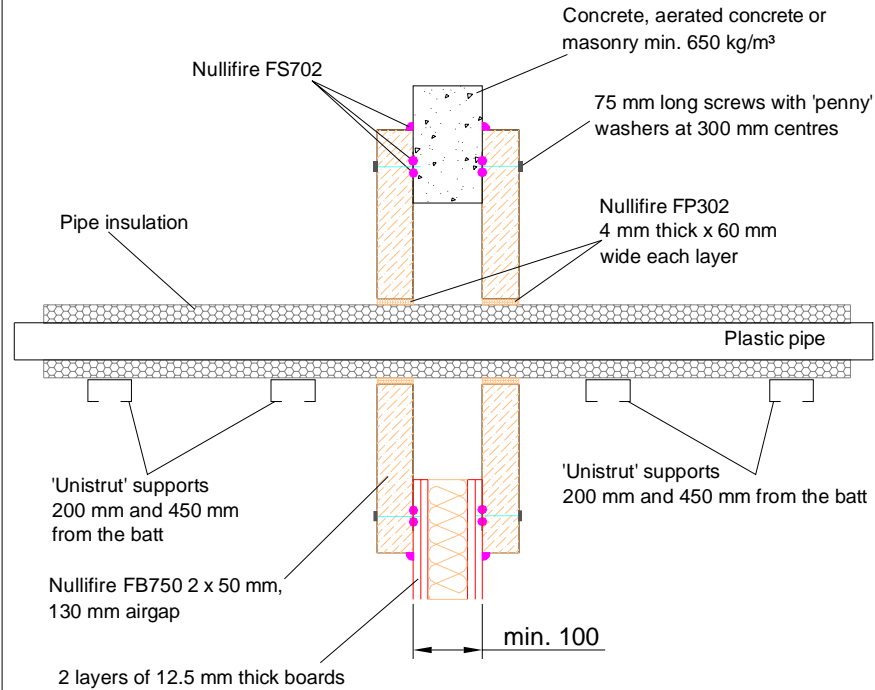
Services	Seal structure	Fire class
Copper pipe Ø159mm / 2mm wall	30mm thick Paroc Stone wool pipe insulation CI	EI120 C/U
Copper pipe Ø15mm / 1mm wall	40mm thick Paroc Stone wool pipe insulation CI	

Nullifire

Nullifire FB750-PS14a



Nullifire FB750-PS14b



APPROVAL:

ETA 17/0391

Tested pipe types and max. Ø of the pipes
Look at the table in this detail

FB750-PS14
Fire class; Look at the table in this detail

Additional information ETA-approval/ Annex A.

Technical installation instructions need to be followed installing the products.

The max. seal size of 1200 mm wide by 1800 mm high

Min. 100 mm to edge of seal and between services

The min. permitted separation between pipes of 95 mm

PVC-U pipe according to EN 1329-1, EN 1452-2 and EN 1453-1

\$ EN12201 DIN 8074/8075
@ ISO 15494 DIN 8077/8078
CS - Continuous sustained

U/C = (Uncapped/Capped)

Services	Seal components	Fire class
PVC-U# pipe up to Ø36mm/1.8mm wall	1 x layer of 60 x 4mm Nullifire FP302 to both faces	EI90 U/C
PVC-U# up to Ø40mm/1.9-3.0mm wall, insulated with 19mm Kaiflex ST - CS	2 x layers of 60 x 4mm Nullifire FB302 to both faces	
PE pipe\$ up to Ø40mm/2.4-3.7mm wall, insulated with 19mm Kaiflex ST - CS		
PP pipe @ up to Ø40mm/1.8-5.5mm wall, insulated with 19mm Kaiflex ST - CS		
PE pipe\$ up to Ø110mm/3.4mm wall	3 x layers of 60 x 4mm Nullifire FP302 to both faces	
PVC-U# pipes up to Ø110mm/3.2-4.2mm wall		
PP pipe@ up to Ø110mm/3.4mm wall		

THE CONTENTS OF THE DRAWING

PVC-U, PP or PE pipe penetrating through a flexible or rigid wall construction with FB750 pf

DESIGNER

REV

Nullifire has provided this specification on the basis of the data and information given to Nullifire by the customer, the Nullifire product information and level of technical knowledge this specification relates to is expected to provide the level of fire performance, should the proposed detail be subjected to the standardised fire resistance performance against which the judgment has been made.

The accuracy of this specification relies on the following:
1. Only Nullifire products as defined in the specification are used.
2. The specific products are installed by a competent person, utilising Nullifire installation manual and data sheets noting limitations.
3. The proposed specification has been checked by the user.
4. For Details on CE Marked Products Refer to the CE Technical Data Sheets.

SEAL OF APPROVAL MUST BE VERIFIED IF THIS DOCUMENT HAS BEEN MODIFIED

DATE

28.9.2018

SCALE

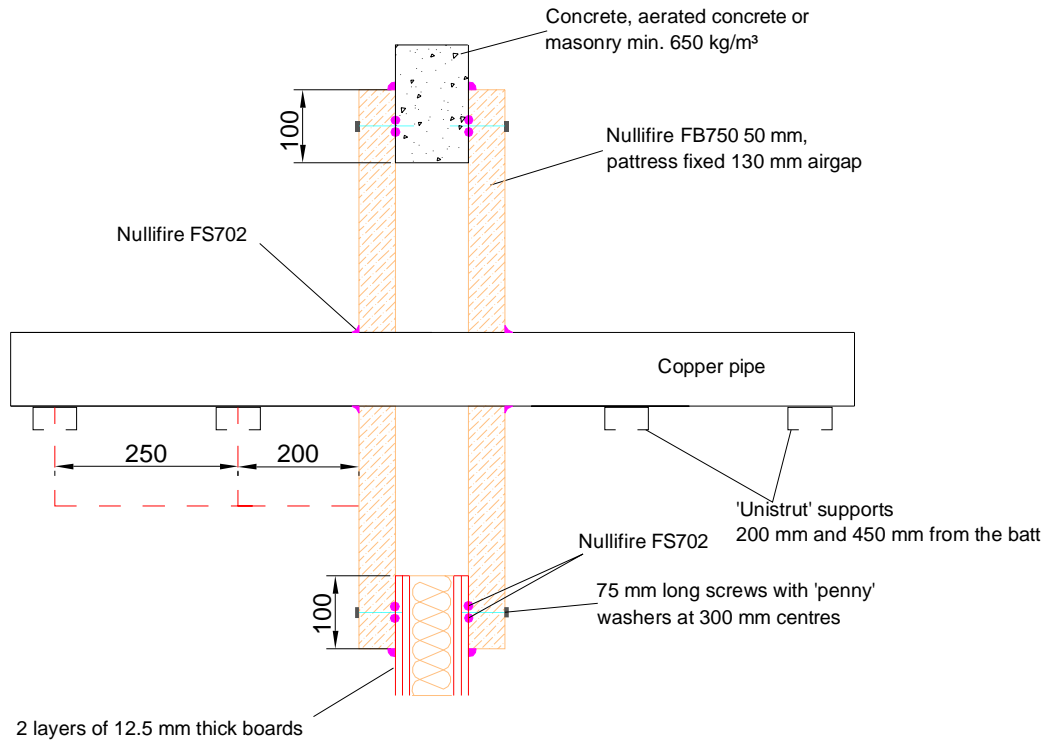
Not scaled

DETAIL MARK

FB750-PS14

Nullifire

Nullifire FB750-PS15



APPROVAL:

ETA 17/0392

Tested pipe types and max. Ø of the pipes
Look at the table in this detail

FB750-PS15
Fire class; Look at the table in this detail

Additional information ETA-approval/ Annex A.

Technical installation instructions need to be followed installing the products.

The max. seal size of 1200 mm wide by 1800 mm high

Min. 100 mm to edge of seal and between services

The min. permitted separation between pipes of 95 mm

U/C = (Uncapped/Capped)

Services	Seal components	Fire class
Copper pipe Ø15mm / 0.7-14.2mm wall thickness	Nullifire FB750 coating sealing with Nullifire FS702	E190 C/U
Copper pipe Ø159mm / 2.0-14.2mm wall thickness		E120 C/U

THE CONTENTS OF THE DRAWING

Copper pipe penetrating through a flexible or rigid wall construction

DESIGNER

REV

DATE

28.9.2018

SCALE

Not scaled

DETAIL MARK

FB750-PS15

Nullifire has provided this specification on the basis of the data and information given to Nullifire by the customer, the Nullifire product information and level of technical knowledge this specification relates to is expected to provide the level of fire performance, should the proposed detail be subjected to the standardised fire resistance performance against which the judgment has been made.

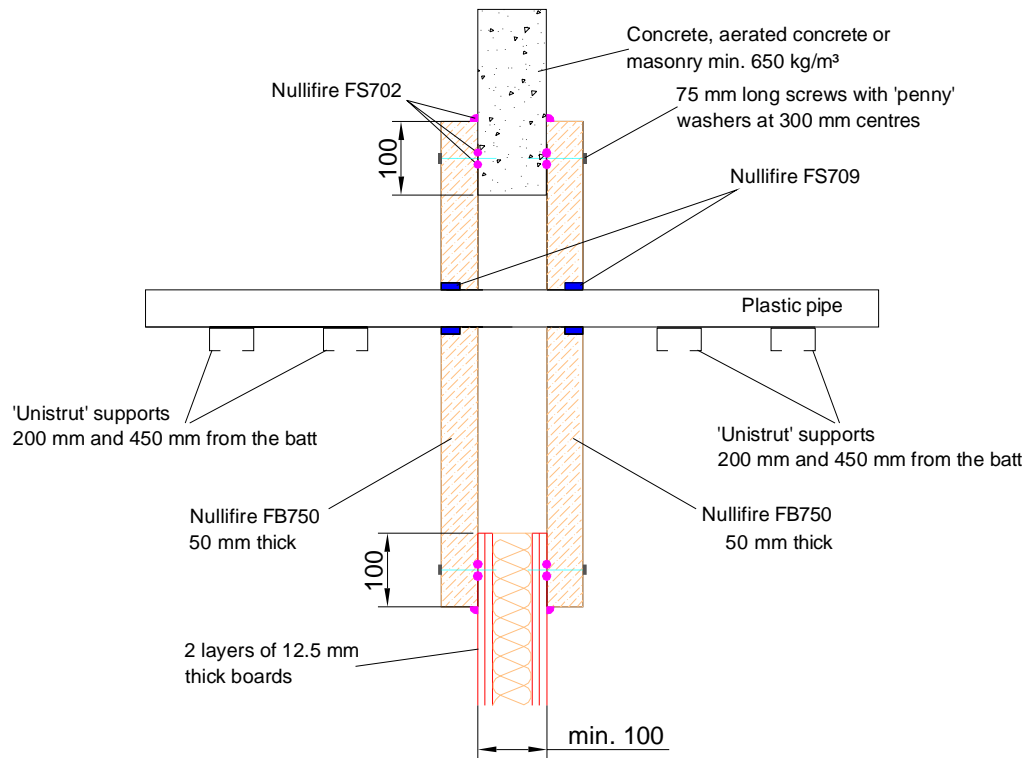
The accuracy of this specification relies on the following:

1. Only Nullifire products as defined in the specification are used.
2. The specific products are installed by a competent person, utilising Nullifire installation manual and data sheets noting limitations.
3. The proposed specification has been checked by the user.
4. For Details on CE Marked Products Refer to the CE Technical Data Sheets.

SEAL OF APPROVAL MUST BE VERIFIED IF THIS DOCUMENT HAS BEEN MODIFIED

Nullifire

Nullifire FB750-PS16



APPROVAL:

ETA 17/0392

Tested pipe types and max. Ø of the pipes
Look at the table in this detail

FB750-PS16

Fire class; Look at the table in this detail

Additional information ETA-approval/ Annex A.

Technical installation instructions need to be followed installing the products.

The max. seal size of 1200 mm wide by 1800 mm high

Min. 100 mm to edge of seal and between services

The min. permitted separation between pipes of 95 mm

U/C = (Uncapped/Capped)

Services	Seal components	Fire class
PEX pipe, up to Ø28mm / 2.6mm wall	25 x 10 mm Nullifire FS709, flush to both faces	EI90 U/C

THE CONTENTS OF THE DRAWING

PEX pipe penetrating through a flexible or rigid wall construction

DESIGNER

REV

DATE

28.9.2018

SCALE

Not scaled

DETAIL MARK

FB750-PS16

Nullifire has provided this specification on the basis of the data and information given to Nullifire by the customer, the Nullifire product information and level of technical knowledge this specification relates to is expected to provide the level of fire performance, should the proposed detail be subjected to the standardised fire resistance performance against which the judgment has been made.

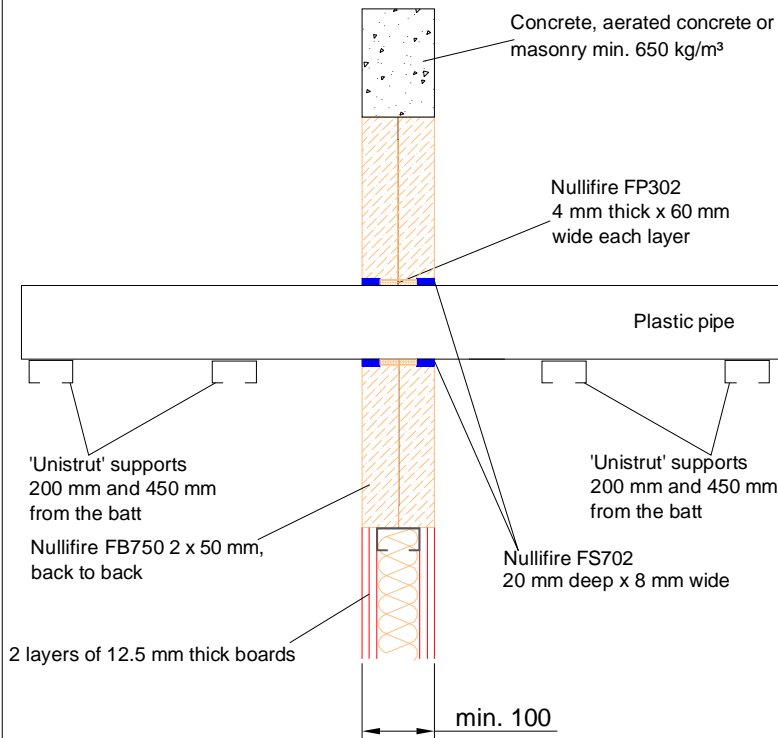
The accuracy of this specification relies on the following:

1. Only Nullifire products as defined in the specification are used.
2. The specific products are installed by a competent person, utilising Nullifire installation manual and data sheets noting limitations.
3. The proposed specification has been checked by the user.
4. For Details on CE Marked Products Refer to the CE Technical Data Sheets.

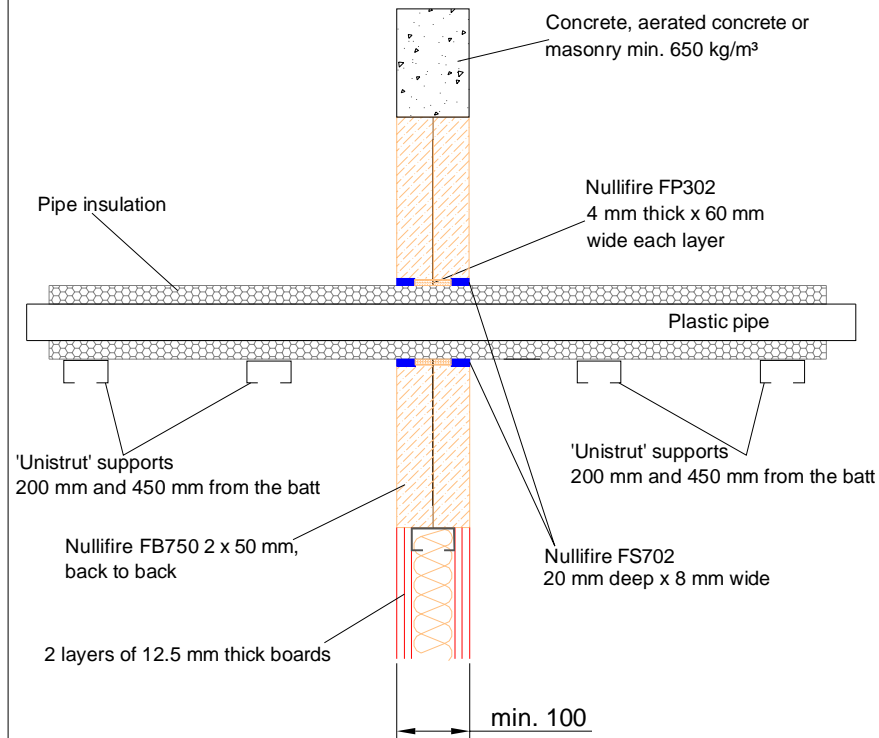
SEAL OF APPROVAL MUST BE VERIFIED IF THIS DOCUMENT HAS BEEN MODIFIED

Nullifire

Nullifire FB750-PS17a



Nullifire FB750-PS17b



APPROVAL:

ETA 17/0391

Tested pipe types and max. Ø of the pipes
Look at the table in this detail

FB750-PS17

Fire class; Look at the table in this detail

Additional information ETA-approval/ Annex A.

Technical installation instructions need to be followed installing the products.

The max. seal size of 1200mm wide by 1800mm high

Min. 100mm to edge of seal and between services

The min. permitted separation between pipes of 65mm

PVC-U pipe according to EN 1329-1, EN 1452-2 and EN 1453-1

\$ EN12201 DIN 8074/8075
@ ISO 15494 DIN 8077/8078
CS - Continuous sustained

U/C = (Uncapped/Capped)

Services	Fire class	Seal specification
PVC-U# up to Ø40mm/1.9-3.0mm wall, insulated with 19mm Kaiflex ST - CS	EI60 U/C	2 x layers of 60 x 4mm Nullifire FP302 central plus 8mm wide x 20mm deep Nullifire FS702 coating flush to both faces
PE pipe\$ up to Ø40mm/2.4-3.7mm wall, insulated with 19mm Kaiflex ST - CS		
PP pipe @ up to Ø40mm/1.8-5.5mm wall, insulated with 19mm Kaiflex ST - CS		
PVC-U# pipe up to Ø110mm/4.2mm wall	EI90 U/C	3 x layers of 60 x 4mm Nullifire FP302 central plus 12mm wide x 20mm deep Nullifire FS702 coating flush to both faces
PE pipe\$ up to Ø110mm/3.4mm wall		
PVC-U# pipes up to Ø110mm/4.2mm wall		
PP pipe@ up to Ø110mm/3.4mm wall		

THE CONTENTS OF THE DRAWING

PVC-U, PP or PE pipe penetrating through a flexible or rigid wall construction with FB750 btob

DESIGNER

REV

Nullifire has provided this specification on the basis of the data and information given to Nullifire by the customer, the Nullifire product information and level of technical knowledge this specification relates to is expected to provide the level of fire performance, should the proposed detail be subjected to the standardised fire resistance performance against which the judgment has been made.

The accuracy of this specification relies on the following:
1. Only Nullifire products as defined in the specification are used.
2. The specific products are installed by a competent person, utilising Nullifire installation manual and data sheets noting limitations.
3. The proposed specification has been checked by the user.
4. For Details on CE Marked Products Refer to the CE Technical Data Sheets.

SEAL OF APPROVAL MUST BE VERIFIED IF THIS DOCUMENT HAS BEEN MODIFIED

DATE

28.9.2018

SCALE

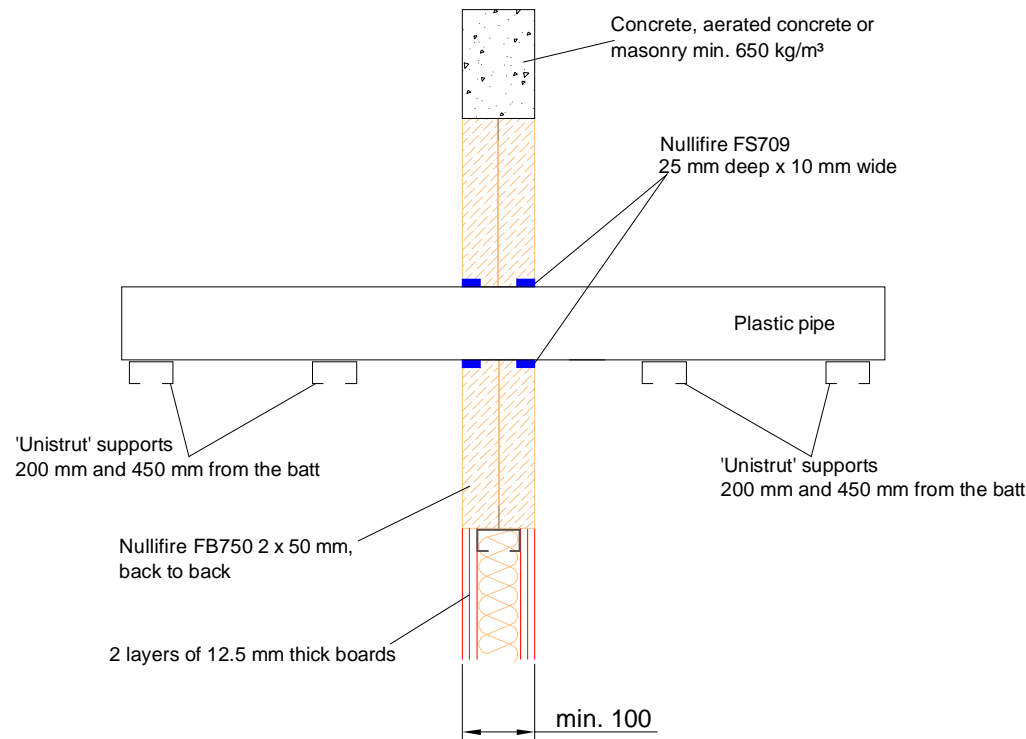
Not scaled

DETAIL MARK

FB750-PS17

Nullifire

Nullifire **FB750-PS18**



APPROVAL:

ETA 17/0392

Tested pipe types and max. Ø of the pipes
Look at the table in this detail

FB750-PS18
Fire class; Look at the table in this detail

Additional information ETA-approval/ Annex A.

Technical installation instructions need to be followed installing the products.

The max. seal size of 1200 mm wide by 1800 mm high

Min. 100 mm to edge of seal and between services

The min. permitted separation between pipes of 65 mm

U/C = (Uncapped/Capped)

Services	Seal components	Fire class
PEX pipe, up to Ø28mm / 2.6mm wall	25 x 10 mm Nullifire FS709, flush to both faces	EI60 U/C

THE CONTENTS OF THE DRAWING

PEX pipe penetrating through a flexible or rigid wall construction

DESIGNER

REV

DATE

28.9.2018

SCALE

Not scaled

DETAIL MARK

FB750-PS18

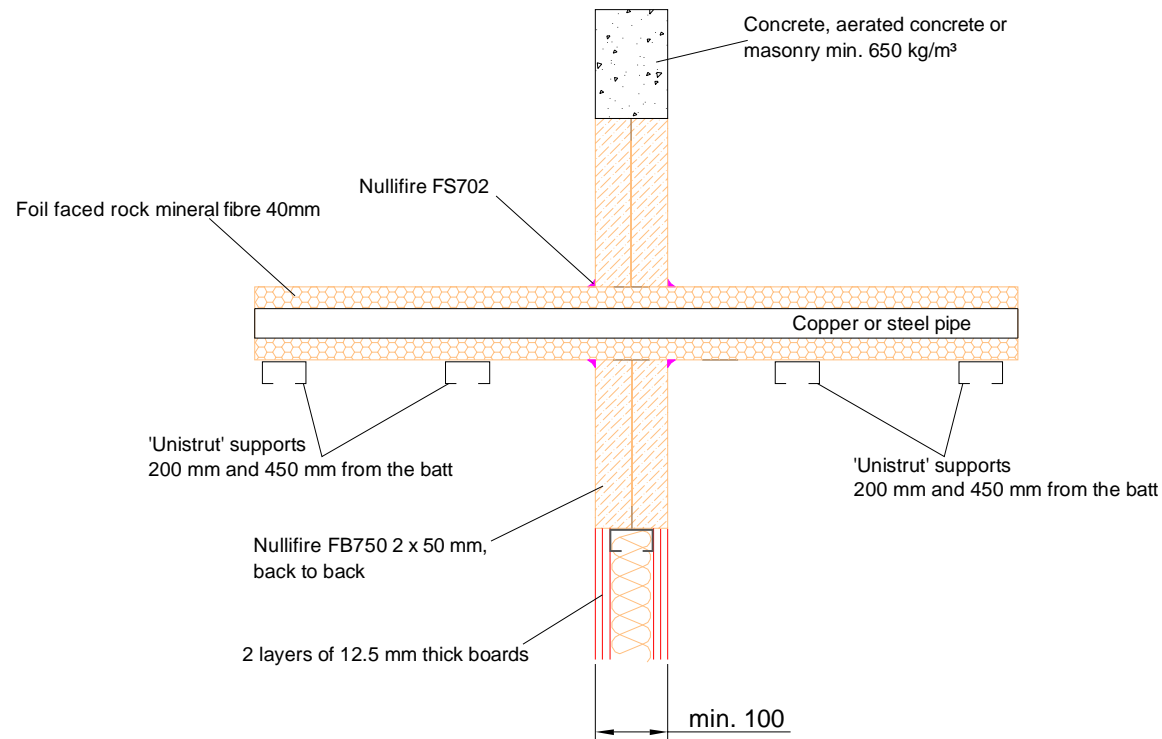
Nullifire has provided this specification on the basis of the data and information given to Nullifire by the customer, the Nullifire product information and level of technical knowledge this specification relates to is expected to provide the level of fire performance, should the proposed detail be subjected to the standardised fire resistance performance against which the judgment has been made.

The accuracy of this specification relies on the following:
1. Only Nullifire products as defined in the specification are used.
2. The specific products are installed by a competent person, utilising Nullifire installation manual and data sheets noting limitations.
3. The proposed specification has been checked by the user.
4. For Details on CE Marked Products Refer to the CE Technical Data Sheets.

SEAL OF APPROVAL MUST BE VERIFIED IF THIS DOCUMENT HAS BEEN MODIFIED

Nullifire

Nullifire FB750-PS19



APPROVAL:

ETA 17/0392

Tested pipe types and max. Ø of the pipes

Look at the table in this detail

FB750-PS19

Fire class; Look at the table in this detail

Additional information ETA-approval/ Annex A.

Technical installation instructions need to be followed installing the products.

The max. seal size of 1200 mm wide by 1800 mm high

Min. 100 mm to edge of seal and between services

The min. permitted separation between pipes of 65 mm

U/C = (Uncapped/Capped)

Services	Seal components	Fire class
Copper or steel pipe, Ø15mm / 0.7-14.2 mm wall thickness, 40mm thick foil faced rock mineral fibre - CS	Nullifire FB750 coating sealing with Nullifire FS702	EI90 C/U
Copper or steel pipe, Ø159mm / 2.0-14.2 mm wall thickness, 40mm thick foil faced rock mineral fibre - CS		

THE CONTENTS OF THE DRAWING

Copper or steel pipe penetrating through a flexible or rigid wall construction

DESIGNER

REV

DATE

28.9.2018

SCALE

Not scaled

DETAIL MARK

FB750-PS19

Nullifire has provided this specification on the basis of the data and information given to Nullifire by the customer, the Nullifire product information and level of technical knowledge this specification relates to is expected to provide the level of fire performance, should the proposed detail be subjected to the standardised fire resistance performance against which the judgment has been made.

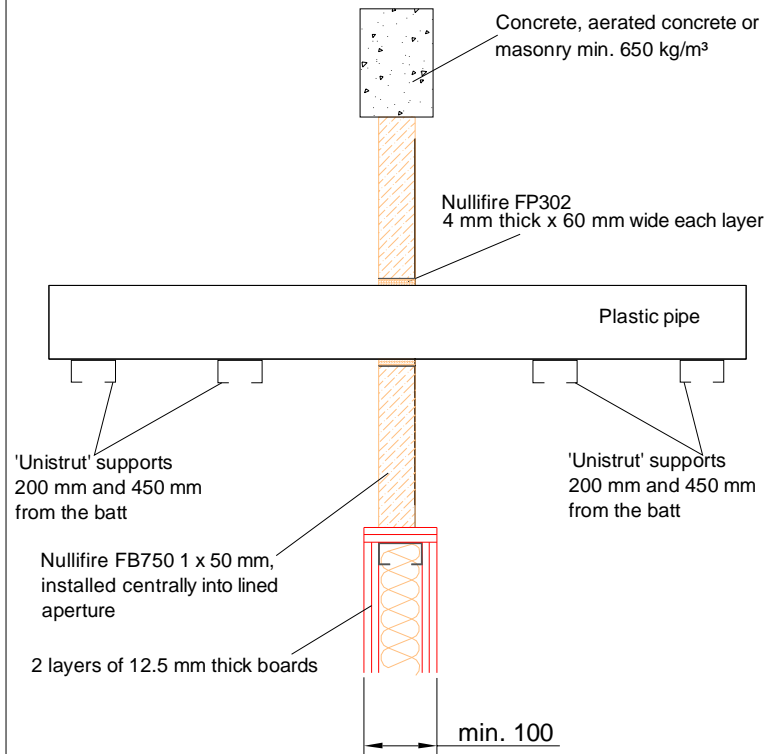
The accuracy of this specification relies on the following:

1. Only Nullifire products as defined in the specification are used.
2. The specific products are installed by a competent person, utilising Nullifire installation manual and data sheets noting limitations.
3. The proposed specification has been checked by the user.
4. For Details on CE Marked Products Refer to the CE Technical Data Sheets.

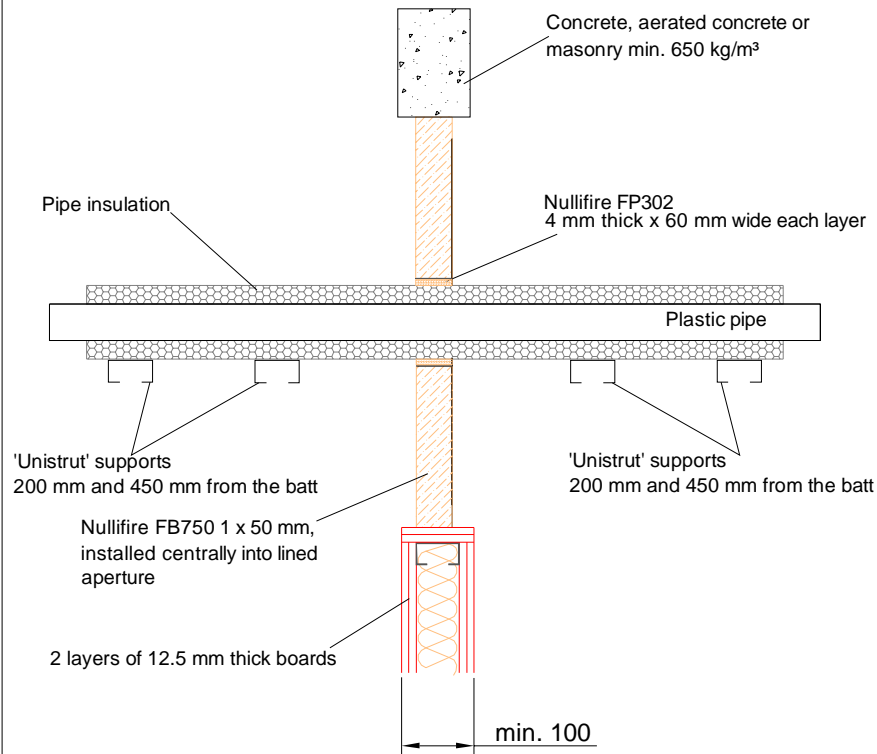
SEAL OF APPROVAL MUST BE VERIFIED IF THIS DOCUMENT HAS BEEN MODIFIED

Nullifire

Nullifire FB750-PS20a



Nullifire FB750-PS20b



APPROVAL:

ETA 17/0391

Tested pipe types and max. Ø of the pipes
Look at the table in this detail

FB750-PS20a-b
Fire class; Look at the table in this detail

Additional information ETA-approval/ Annex A.

Technical installation instructions need to be followed installing the products.

The max. seal size of 1200 mm wide by 1800 mm high

Min permitted separation between pipes of 100 mm and min. 58 mm to edge of seal and between services

PVC-U pipe according to EN 1329-1, EN 1452-2 and EN 1453-1

\$ EN12201 DIN 8074/8075
@ ISO 15494 DIN 8077/8078

U/C = (Uncapped/Capped)

Services	Seal specification	Fire class
PVC-U# up to Ø40mm/1.9-3.0mm wall, insulated with 19mm Kaiflex ST - CS	2 x layers of 60 x 4mm Nullifire FP302, central	EI45 U/C
PE pipe\$ up to Ø40mm/2.4-3.7mm wall, insulated with 19mm Kaiflex ST - CS		
PP pipe @ up to Ø40mm/1.8-5.5mm wall, insulated with 19mm Kaiflex ST - CS		
PE pipe\$ up to Ø110mm/3.5mm wall	3 x layers of 60 x 4mm Nullifire FP302, central	

CS - Continuous Sustained

THE CONTENTS OF THE DRAWING

PVC-U, PP or PE pipe penetrating through a flexible or rigid wall construction

DESIGNER

REV

Nullifire has provided this specification on the basis of the data and information given to Nullifire by the customer, the Nullifire product information and level of technical knowledge this specification relates to is expected to provide the level of fire performance, should the proposed detail be subjected to the standardised fire resistance performance against which the judgment has been made.

The accuracy of this specification relies on the following:
1. Only Nullifire products as defined in the specification are used.
2. The specific products are installed by a competent person, utilising Nullifire installation manual and data sheets noting limitations.
3. The proposed specification has been checked by the user.
4. For Details on CE Marked Products Refer to the CE Technical Data Sheets.

SEAL OF APPROVAL MUST BE VERIFIED IF THIS DOCUMENT HAS BEEN MODIFIED

DATE

28.9.2018

SCALE

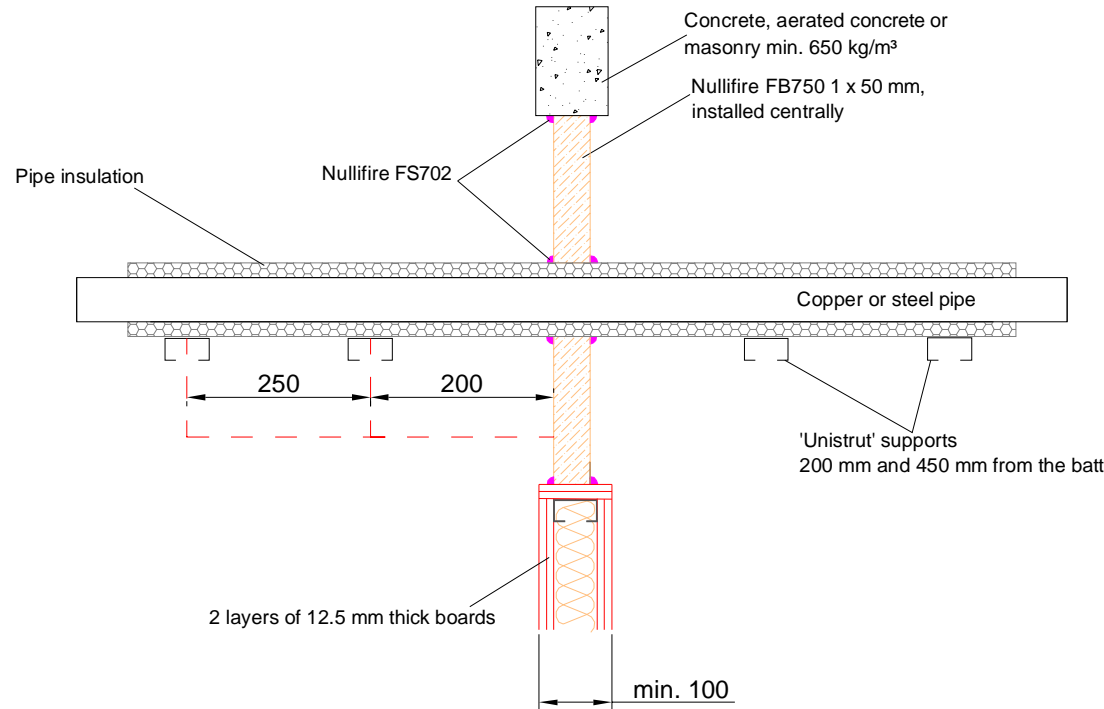
Not scaled

DETAIL MARK

FB750-PS20a-b

Nullifire

Nullifire **FB750-PS21**



APPROVAL:

ETA 17/0391

Tested pipe types and max. Ø of the pipes

Look at the table in this detail

FB750-PS21

Fire class; Look at the table in this detail

Additional information ETA-approval/ Annex A.

Technical installation instructions need to be followed installing the products.

The max. seal size of 1200 mm wide by 1800 mm high

Min permitted separation between pipes of 100 mm and min. 58 mm to edge of seal and between services

U/C = (Uncapped/Capped)

Services	Seal components	Fire class
Copper or steel pipe, Ø15mm / 0.7-14.2 mm wall thickness, insulated with 40mm glass wool -CS	None	EI90 C/U
Copper or steel pipe, Ø159mm / 2.0-14.2 mm wall thickness, insulated with 30mm foil faced stone wool - CS		EI60 C/U

THE CONTENTS OF THE DRAWING

Copper or steel pipe penetrating through a flexible or rigid wall construction with 1x50mm FB750

DESIGNER

REV

DATE

28.9.2018

SCALE

Not scaled

DETAIL MARK

FB750-PS21

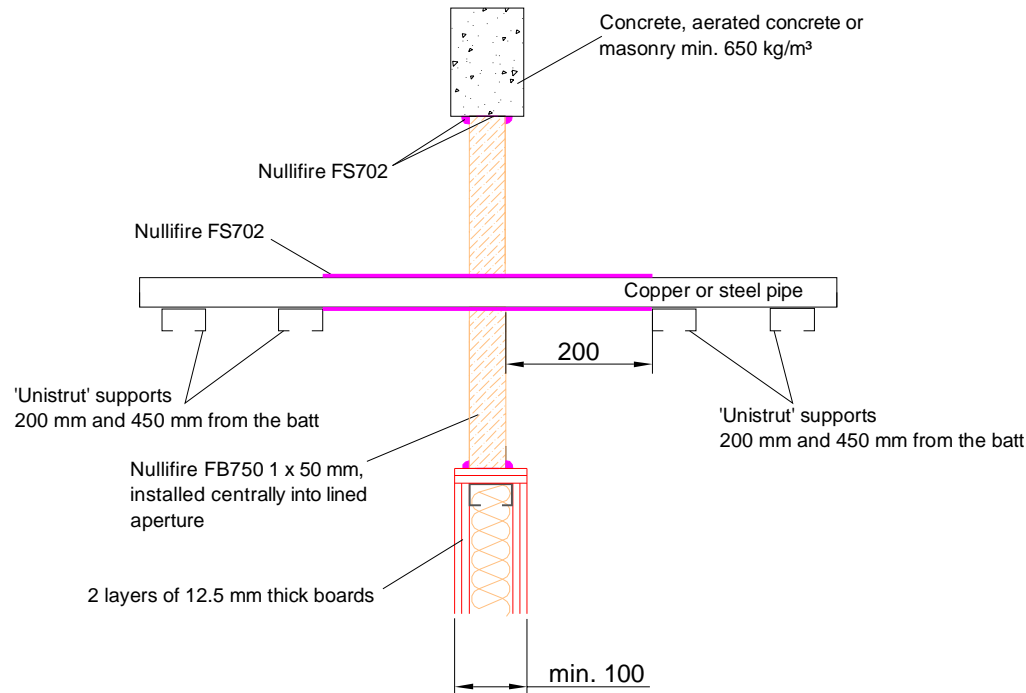
Nullifire has provided this specification on the basis of the data and information given to Nullifire by the customer, the Nullifire product information and level of technical knowledge this specification relates to is expected to provide the level of fire performance, should the proposed detail be subjected to the standardised fire resistance performance against which the judgment has been made.

The accuracy of this specification relies on the following:
1. Only Nullifire products as defined in the specification are used.
2. The specific products are installed by a competent person, utilising Nullifire installation manual and data sheets noting limitations.
3. The proposed specification has been checked by the user.
4. For Details on CE Marked Products Refer to the CE Technical Data Sheets.

SEAL OF APPROVAL MUST BE VERIFIED IF THIS DOCUMENT HAS BEEN MODIFIED

Nullifire

Nullifire FB750-PS22



APPROVAL:

ETA 17/0392

Tested pipe types and max. Ø of the pipes

Look at the table in this detail

FB750-PS22

Fire class; Look at the table in this detail

Additional information ETA-approval/ Annex A.

Technical installation instructions need to be followed installing the products.

The max. seal size of 1200 mm wide by 1800 mm high

Min permitted separation between pipes of 100 mm and min. 58 mm to edge of seal and between services

Services	Fire class	Seal components
Copper pipe Ø10mm / 0.5-14.2mm wall	EI90 C/U	Nullifire FB750 coating sealing pipe to batt and 200x 1.6mm coatback Nullifire FS702
Copper pipe Ø35mm / 0.7-14.2mm wall		
Steel pipe Ø65mm/ 3.2-14.2mm wall	EI30 C/U	
Steel pipe Ø10mm / 1.8-14.2mm wall	EI60 C/U	

THE CONTENTS OF THE DRAWING

Copper or steel pipe penetrating through a flexible or rigid wall construction

DESIGNER

REV

DATE

28.9.2018

SCALE

Not scaled

DETAIL MARK

FB750-PS22

Nullifire has provided this specification on the basis of the data and information given to Nullifire by the customer, the Nullifire product information and level of technical knowledge this specification relates to is expected to provide the level of fire performance, should the proposed detail be subjected to the standardised fire resistance performance against which the judgment has been made.

The accuracy of this specification relies on the following:

1. Only Nullifire products as defined in the specification are used.
2. The specific products are installed by a competent person, utilising Nullifire installation manual and data sheets noting limitations.
3. The proposed specification has been checked by the user.
4. For Details on CE Marked Products Refer to the CE Technical Data Sheets.

SEAL OF APPROVAL MUST BE VERIFIED IF THIS DOCUMENT HAS BEEN MODIFIED

Nullifire