

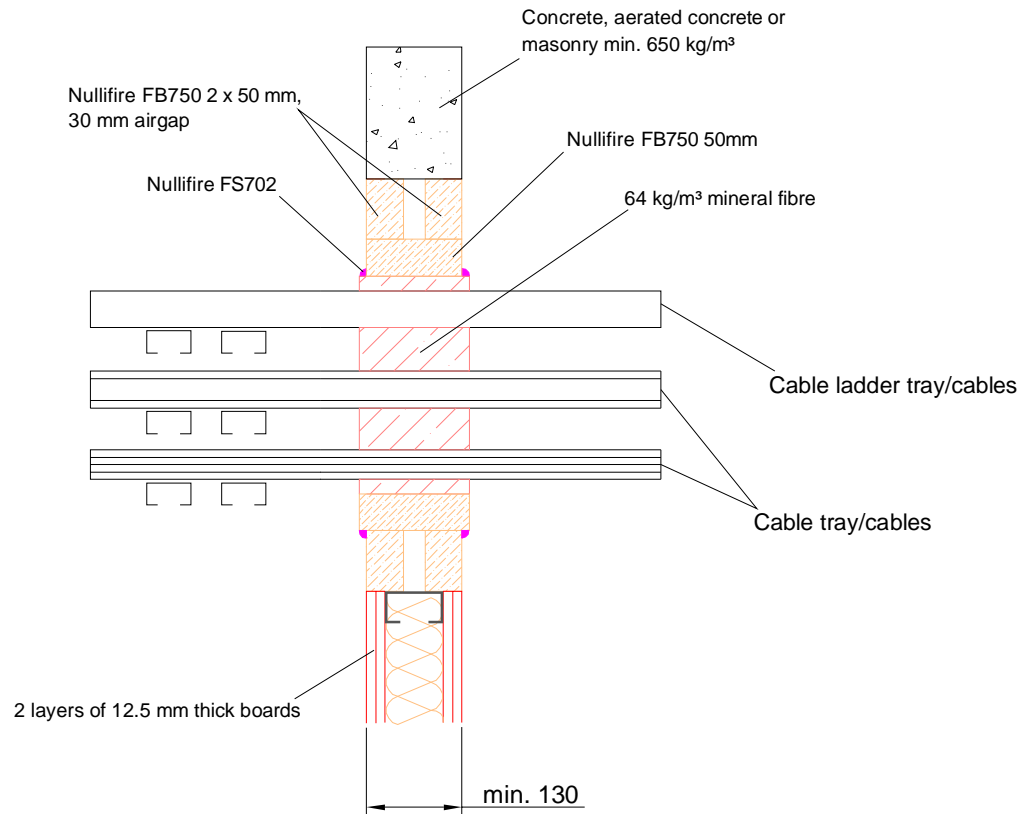
# Nullifire Technical Drawings

## FB750 Coated Batts Electrical Service Penetrations Through Walls

### Table of Contents

- ▶ Cables penetrating through a flexible or rigid wall construction with FB750 incorporating a 'Batt box' (FB750-SS1)
- ▶ Electrical cables penetrating through a flexible or rigid wall construction (FB750-SS2)
- ▶ Electrical and telecom cables penetrating through a flexible or rigid wall construction (FB750-SS3)
- ▶ Cables penetrating through a flexible or rigid wall construction FB750 (FB750-SS4)
- ▶ Electrical cables penetrating through a flexible or rigid wall construction (FB750-SS5)
- ▶ Electrical and telecom cables penetrating through a flexible or rigid wall construction (FB750-SS6)
- ▶ Type D3- electrical cables penetrating through a flexible or rigid wall construction (FB750-SS7)
- ▶ Cables penetrating through a flexible or rigid wall construction (FB750-SS8)

## Nullifire FB750-SS1



### APPROVAL:

ETA 17/0392

**Tested cable types and max. Ø of the cables**  
Look at the table in this detail

### FB750-SS1

Fire class; Look at the attached table

Additional information ETA-approval/ Annex A.

Technical installation instructions need to be followed installing the products.

The max. seal size of 1200 mm wide by 1800 mm high

U/C = (Uncapped/Capped)

Services	Seal structure	Fire class
Electrical cables up to Ø80mm (single, bundled and on steel trays/ladders up to 500mm wide)	A 'batt box' 150mm deep is formed within the primary seal, comprising a lining 50mm thick Nullifire FB750 infilled with stone wool mineral fibre 64kg/m³ coated on both faces with 3mm Nullifire FS702.	EI120
Telecom cable up to Ø21mm in tied bundles up to Ø100mm		
Unsheathed wires up to Ø24mm		

### THE CONTENTS OF THE DRAWING

Cables penetrating through a flexible or rigid wall construction with FB750 incorporating a 'Batt box'

DESIGNER

REV

DATE

28.9.2018

SCALE

Not scaled

DETAIL MARK

**FB750-SS1**

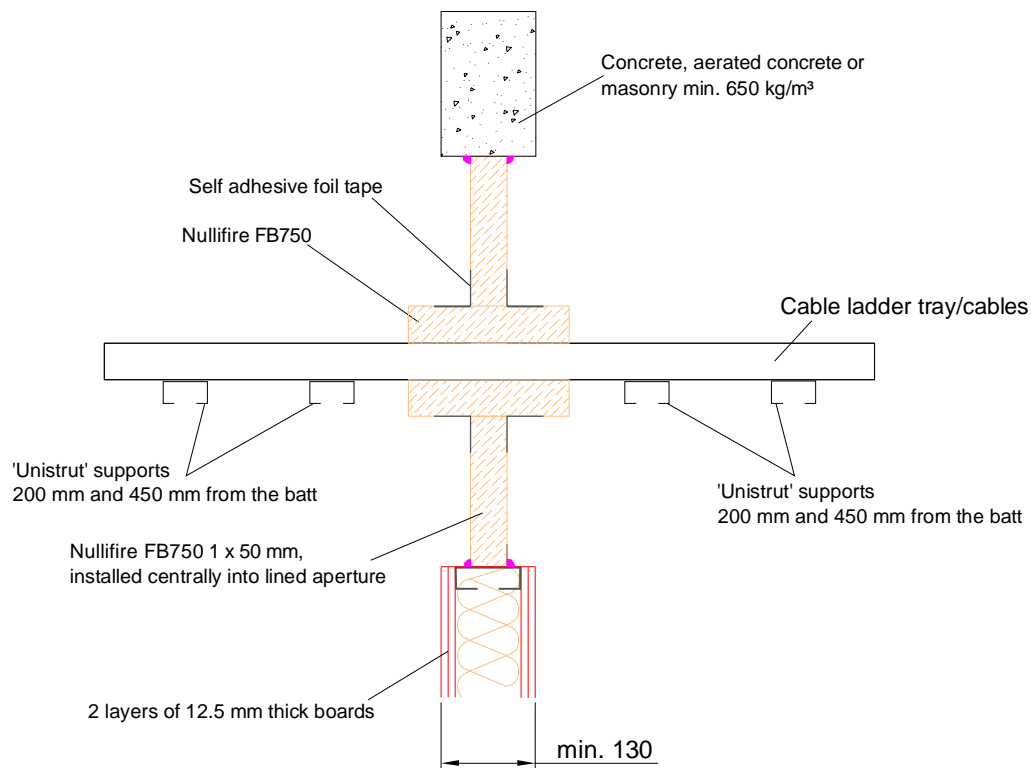
Nullifire has provided this specification on the basis of the data and information given to Nullifire by the customer, the Nullifire product information and level of technical knowledge this specification relates to is expected to provide the level of fire performance, should the proposed detail be subjected to the standardised fire resistance performance against which the judgment has been made.

The accuracy of this specification relies on the following:  
1. Only Nullifire products as defined in the specification are used.  
2. The specific products are installed by a competent person, utilising Nullifire installation manual and data sheets noting limitations.  
3. The proposed specification has been checked by the user.  
4. For Details on CE Marked Products Refer to the CE Technical Data Sheets.

SEAL OF APPROVAL MUST BE VERIFIED IF THIS DOCUMENT HAS BEEN MODIFIED

**Nullifire**

## Nullifire FB750-SS2



### APPROVAL:

ETA 17/0392

**Tested cable types and max. Ø of the cables**  
Look at the table in this detail

### **FB750-SS2**

Fire class; Look at the table in this detail

Additional information ETA-approval/ Annex A.

Technical installation instructions need to be followed installing the products.

The max. seal size of 1200 mm wide by 1800 mm high

Services	Seal components	Fire class
Electrical cables up to Ø22-80mm (single, bundled and on steel trays/ladders up to 500mm wide)	50mm thick Nullifire FB750 220mm long insulation LS	EI60

LS – Local Sustained

### THE CONTENTS OF THE DRAWING

Electrical cables penetrating through a flexible or rigid wall construction

DESIGNER

REV

DATE

28.9.2018

SCALE

Not scaled

DETAIL MARK

**FB750-SS2**

Nullifire has provided this specification on the basis of the data and information given to Nullifire by the customer, the Nullifire product information and level of technical knowledge this specification relates to is expected to provide the level of fire performance, should the proposed detail be subjected to the standardised fire resistance performance against which the judgment has been made.

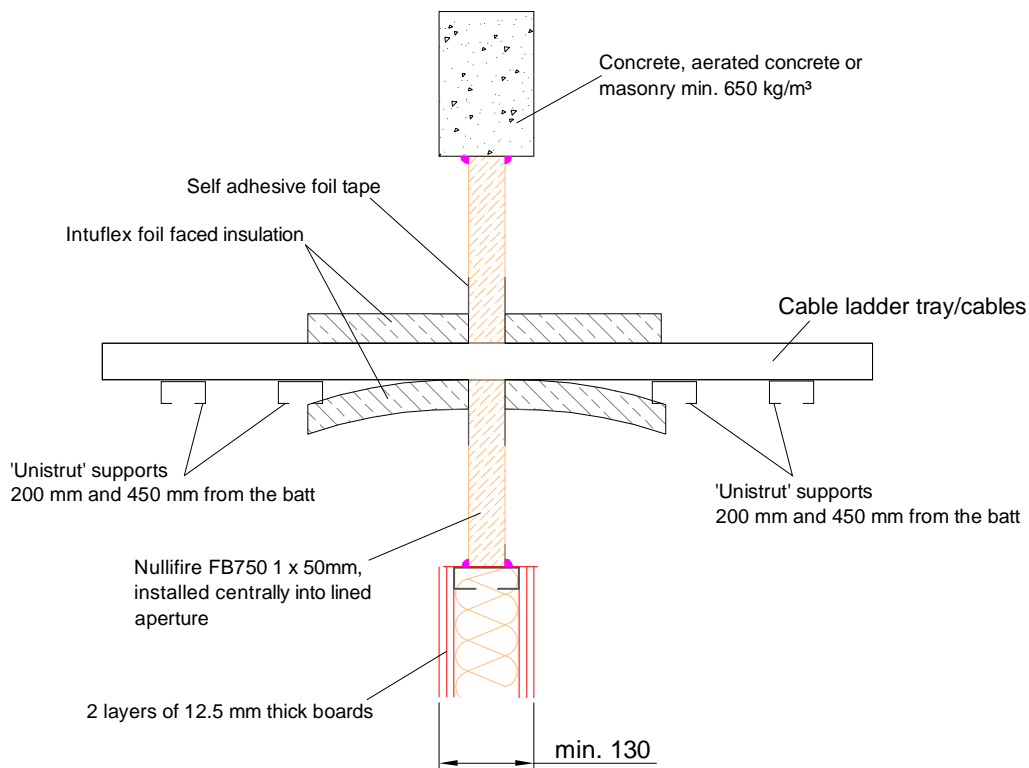
The accuracy of this specification relies on the following:

1. Only Nullifire products as defined in the specification are used.
2. The specific products are installed by a competent person, utilising Nullifire installation manual and data sheets noting limitations.
3. The proposed specification has been checked by the user.
4. For Details on CE Marked Products Refer to the CE Technical Data Sheets.

SEAL OF APPROVAL MUST BE VERIFIED IF THIS DOCUMENT HAS BEEN MODIFIED

**Nullifire**

# **Nullifire FB750-SS3**



## **APPROVAL:**

ETA 17/0392

**Tested cable types and max. Ø of the cables**  
Look at the table in this detail

**FB750-SS3**  
Fire class; Look at the table in this detail

Additional information ETA-approval/ Annex A.

Technical installation instructions need to be followed installing the products.

The max. seal size of 1200 mm wide by 1800 mm high

Services	Seal components	Fire class
Electrical cables up to Ø 21mm (single, bundled and on steel trays/ladders up to 500mm wide)	40mm thick Intuflex, 200mm long insulation LI to both sides	E160
Telecom cable up to Ø21mm in tied bundles up to Ø100mm		
Unsheathed wires up to Ø24mm		

LI = local Interrupted

## THE CONTENTS OF THE DRAWING

**Electrical and telecom cables penetrating through a flexible or rigid wall construction**

DESIGNER

REV

DATE

28.9.2018

SCALE

Not scaled

DETAIL MARK

**FB750-SS3**

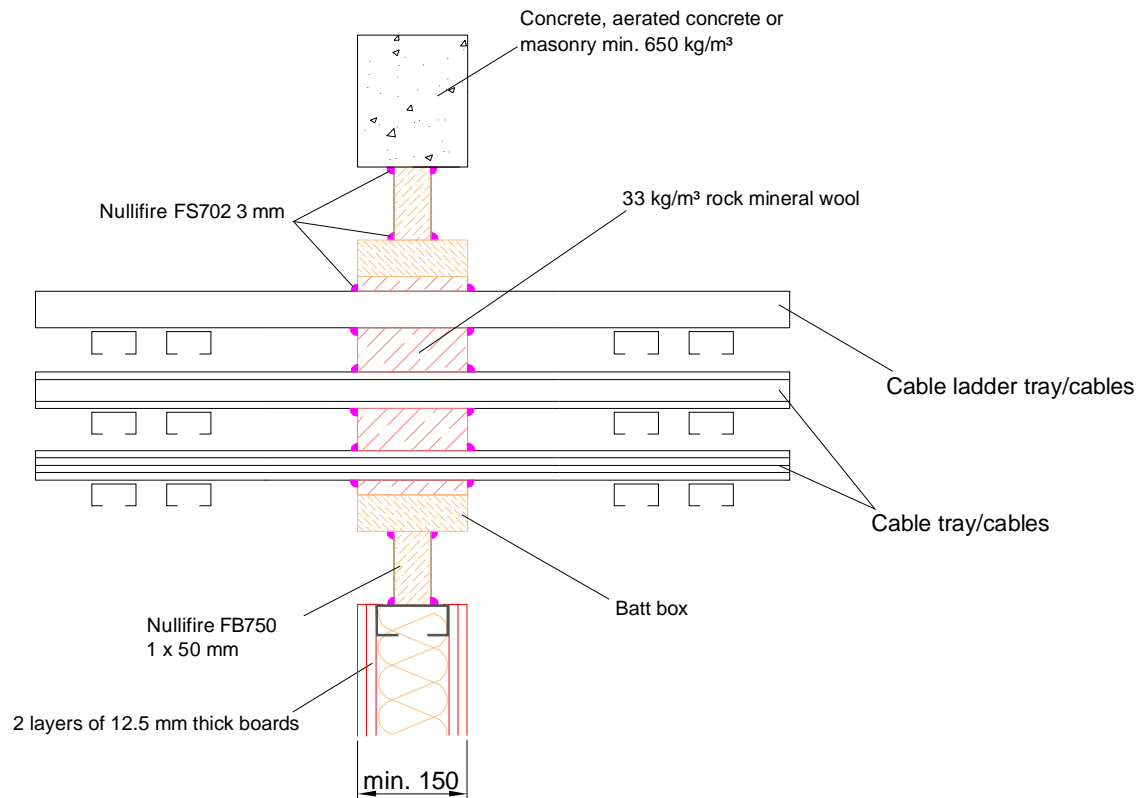
Nullifire has provided this specification on the basis of the data and information given to Nullifire by the customer, the Nullifire product information and level of technical knowledge this specification relates to is expected to provide the level of fire performance, should the proposed detail be subjected to the standardised fire resistance performance against which the judgment has been made.

The accuracy of this specification relies on the following:  
1. Only Nullifire products as defined in the specification are used.  
2. The specific products are installed by a competent person, utilising Nullifire installation manual and data sheets noting limitations.  
3. The proposed specification has been checked by the user.  
4. For Details on CE Marked Products Refer to the CE Technical Data Sheets.

SEAL OF APPROVAL MUST BE VERIFIED IF THIS DOCUMENT HAS BEEN MODIFIED

**Nullifire**

## Nullifire FB750-SS4



### APPROVAL:

ETA 17/0392

**Tested cable types and max. Ø of the cables**  
Look at the table in this detail

### FB750-SS4

Fire class; Look at the table in this detail

Additional information ETA-approval/ Annex A.

Technical installation instructions need to be followed installing the products.

The max. seal size of 1200 mm wide by 1800 mm high

Services	Fire class	Seal components
Electrical cables up to Ø21mm (single, bundled and on steel trays/ladders up to 500mm wide)	EI60	150mm deep 50mm wide perimeter batt lining the aperture fixed to the outer layers of batt with 2No. 100mm long 'pig tail' screws on each corner. 'Ripped' rock mineral wool (33kg/m³ density) stuffing around the cables and trays/ladders
Telecom cable up to Ø 21mm in tied bundles up to Ø100mm	EI90	
Unsheathed wires up to Ø24mm	EI60	
Electrical cables up to Ø22-80mm (single, bundled and on steel trays/ladders up to 500mm wide)	EI45	

### THE CONTENTS OF THE DRAWING

Cables penetrating through a flexible or rigid wall construction

DESIGNER

REV

DATE

28.9.2018

SCALE

Not scaled

DETAIL MARK

**FB750-SS4**

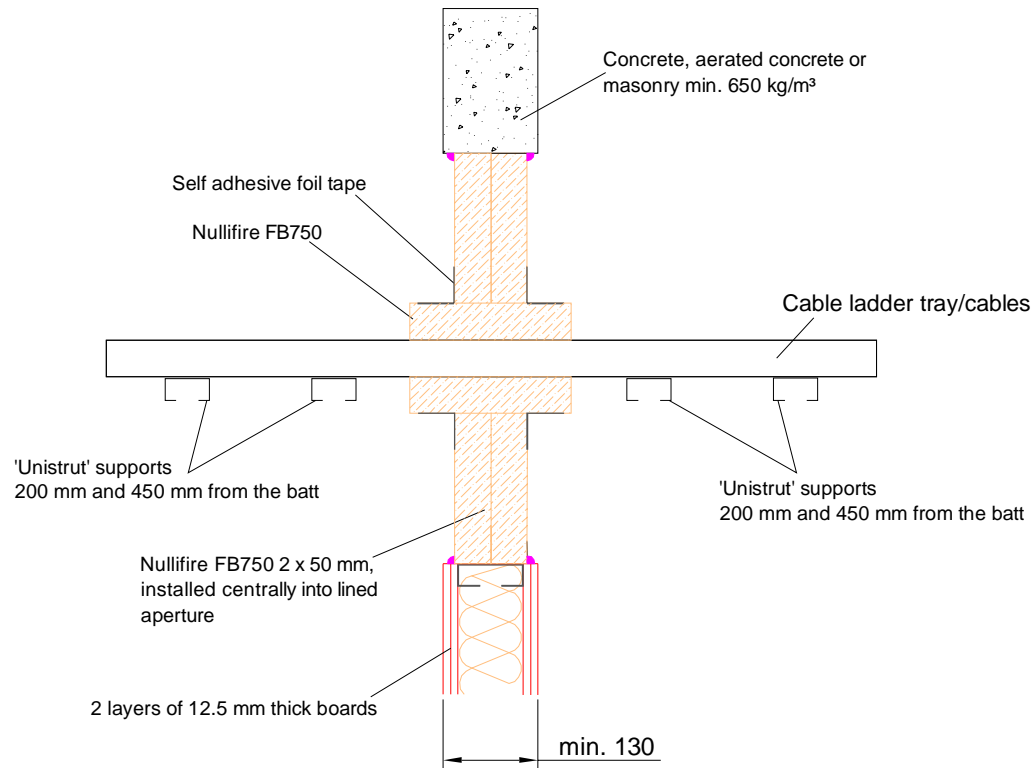
Nullifire has provided this specification on the basis of the data and information given to Nullifire by the customer, the Nullifire product information and level of technical knowledge this specification relates to is expected to provide the level of fire performance, should the proposed detail be subjected to the standardised fire resistance performance against which the judgment has been made.

The accuracy of this specification relies on the following:  
1. Only Nullifire products as defined in the specification are used.  
2. The specific products are installed by a competent person, utilising Nullifire installation manual and data sheets noting limitations.  
3. The proposed specification has been checked by the user.  
4. For Details on CE Marked Products Refer to the CE Technical Data Sheets.

SEAL OF APPROVAL MUST BE VERIFIED IF THIS DOCUMENT HAS BEEN MODIFIED

**Nullifire**

## Nullifire FB750-SS5



### APPROVAL:

ETA 17/0392

**Tested cable types and max. Ø of the cables**  
Look at the table in this detail

### **FB750-SS5**

Fire class; Look at the table in this detail

Additional information ETA-approval/ Annex A.

Technical installation instructions need to be followed installing the products.

The max. seal size of 1200 mm wide by 1800 mm high

Services	Seal components	Fire class
Electrical cables up to Ø22-80mm (single, bundled and on steel trays/ladders up to 500mm wide)	50mm thick Nullifire FB750 220mm long insulation LS	EI120

LS – Local Sustained

### THE CONTENTS OF THE DRAWING

Electrical cables penetrating through a flexible or rigid wall construction

DESIGNER

REV

DATE

28.9.2018

SCALE

Not scaled

DETAIL MARK

**FB750-SS5**

Nullifire has provided this specification on the basis of the data and information given to Nullifire by the customer, the Nullifire product information and level of technical knowledge this specification relates to is expected to provide the level of fire performance, should the proposed detail be subjected to the standardised fire resistance performance against which the judgment has been made.

The accuracy of this specification relies on the following:

1. Only Nullifire products as defined in the specification are used.
2. The specific products are installed by a competent person, utilising Nullifire installation manual and data sheets noting limitations.
3. The proposed specification has been checked by the user.
4. For Details on CE Marked Products Refer to the CE Technical Data Sheets.

SEAL OF APPROVAL MUST BE VERIFIED IF THIS DOCUMENT HAS BEEN MODIFIED

**Nullifire**

The diagram illustrates the assembly components from top to bottom:

- Concrete, aerated concrete or masonry min. 650 kg/m³**: The structural floor slab.
- Self adhesive foil tape**: Applied at the interface between the concrete and insulation.
- Intuflex foil faced insulation**: A layer of insulation surrounding the central duct.
- Cable ladder tray/cables**: The horizontal support structure passing through the center.
- 'Unistrut' supports 200 mm and 450 mm from the batt**: Vertical supports holding the tray in place.
- Nullifire FB750 2 x 50 mm, installed centrally into lined aperture**: The fire-rated protective duct.
- 2 layers of 12.5 mm thick boards**: Additional insulation or protection below the main batt.
- min. 130**: Dimension indicating the minimum width of the protected area.

Additional information ETA-approval/ Annex A.

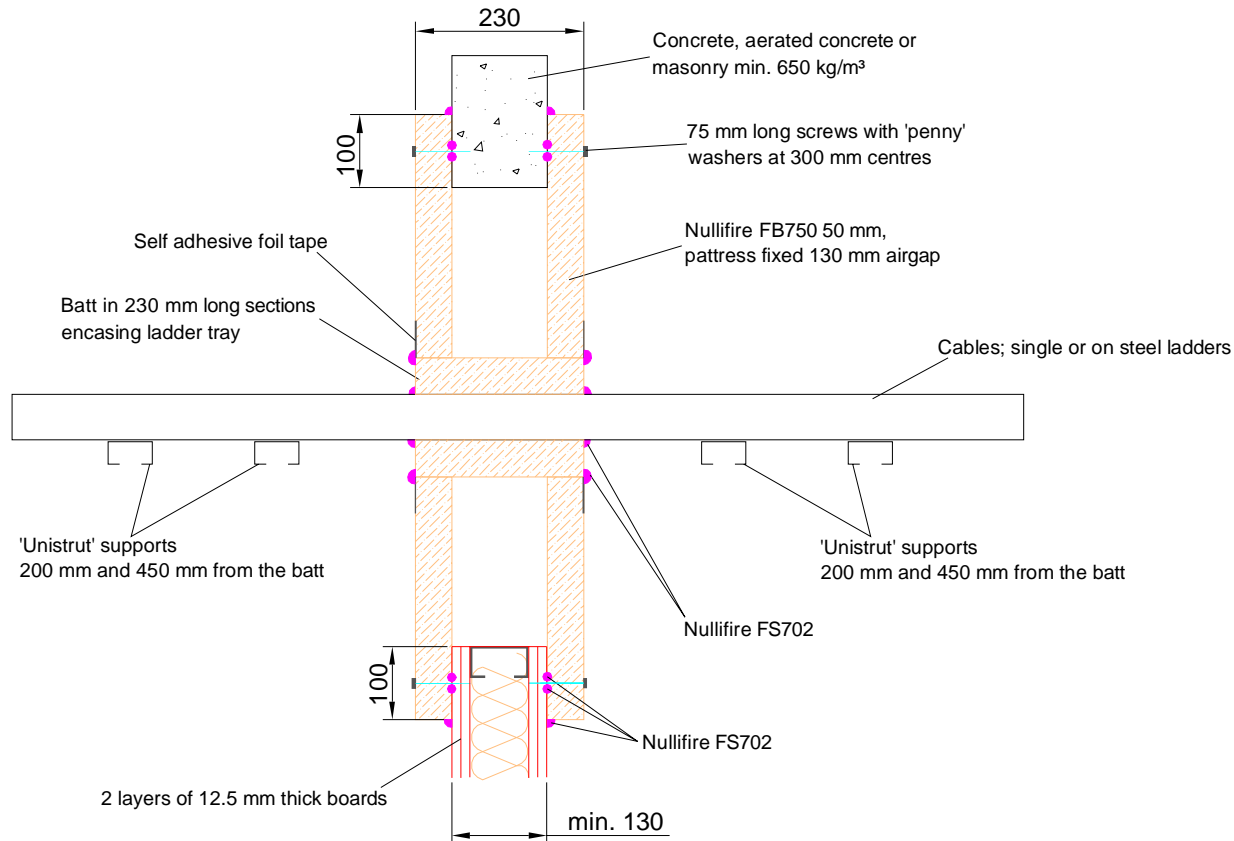
Technical installation instructions need to be followed installing the products.

Services	Seal components	Fire class
Electrical cables up to Ø21mm (single, bundled and on steel trays/ladders up to 500mm wide)	40mm thick Intufflex, 200mm long insulation LI to both sides	EI120
Telecom cable up to Ø21mm in tied bundles up to Ø100mm		
Unsheathed wires up to Ø24mm		

SEAL OF APPROVAL MUST BE VERIFIED IF THIS DOCUMENT HAS BEEN MODIFIED

**Nullifire**

## Nullifire FB750-SS7



### APPROVAL:

ETA 17/0392

**Tested cable types and max. Ø of the cables**  
Look at the table in this detail

### **FB750-SS7**

Fire class; Look at the table in this detail

Additional information ETA-approval/ Annex A.

Technical installation instructions need to be followed installing the products.

The max. seal size of 1200 mm wide by 1800 mm high

Services	Seal components	Fire class
Type D3 Electrical cables up to Ø62.5mm (single, on steel ladder up to 200mm wide)	50mm thick Nullifire FB750, 230mm long insulation LS	EI120

Type D3 cable = 4 x 185 mm<sup>2</sup> core HD604.5 electrical cable with XLPE insulation, EVA sheath and Ø52 mm

### THE CONTENTS OF THE DRAWING

Type D3- electrical cables penetrating through a flexible or rigid wall construction

DESIGNER

REV

DATE

28.9.2018

SCALE

Not scaled

DETAIL MARK

**FB750-SS7**

Nullifire has provided this specification on the basis of the data and information given to Nullifire by the customer, the Nullifire product information and level of technical knowledge this specification relates to is expected to provide the level of fire performance, should the proposed detail be subjected to the standardised fire resistance performance against which the judgment has been made.

The accuracy of this specification relies on the following:

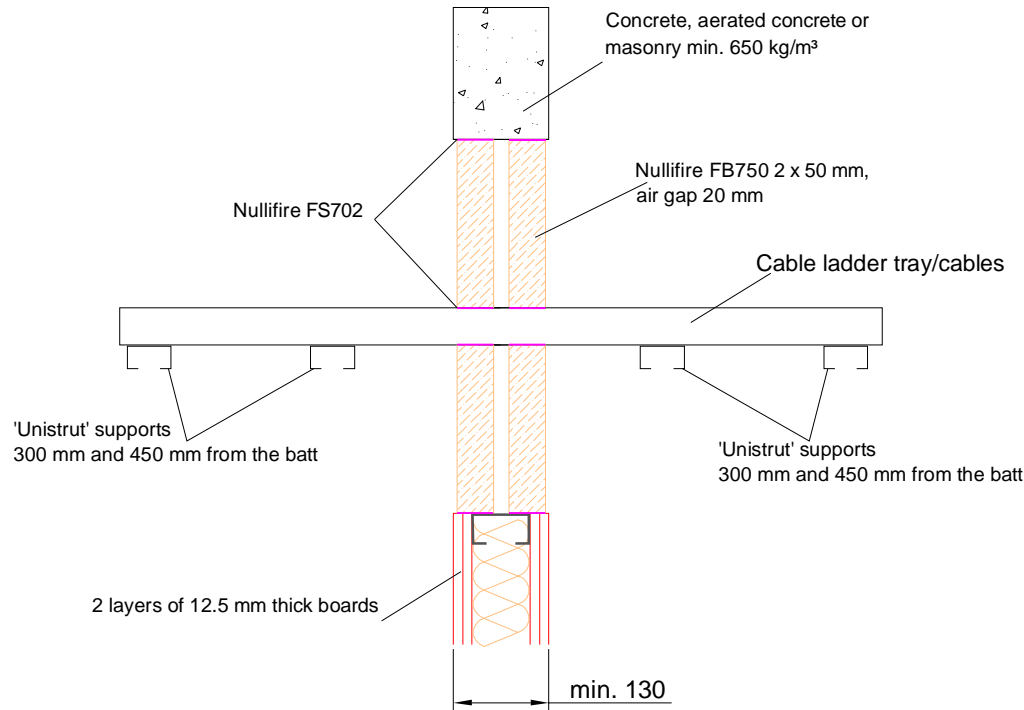
1. Only Nullifire products as defined in the specification are used.
2. The specific products are installed by a competent person, utilising Nullifire installation manual and data sheets noting limitations.
3. The proposed specification has been checked by the user.
4. For Details on CE Marked Products Refer to the CE Technical Data Sheets.

SEAL OF APPROVAL MUST BE VERIFIED IF THIS DOCUMENT HAS BEEN MODIFIED

**Nullifire**



## Nullifire FB750-SS8



### APPROVAL:

ETA 17/0392

**Tested cable types and max. Ø of the cables**  
Look at the table in this detail

### **FB750-SS8**

Fire class; Look at the table in this detail

Additional information ETA-approval/ Annex A.

Technical installation instructions need to be followed installing the products.

The max. seal size of 1200 mm wide by 1800 mm high

Type A1 cable = 5 x 1.5 mm<sup>2</sup> core HD603.3 electrical cable with PVC insulation, PVC sheath and 14 mm diameter

Type D2 cable = 4 x 185 mm<sup>2</sup> core HD22.4 electrical cable with EPR insulation, PO sheath and 64-80 mm diameter

Type C2 cable = 4 x 95 mm<sup>2</sup> core HD22.4 electrical cable with EPR insulation, PO sheath and 48.4-61 mm diameter

Services	Fire class	Seal components
Type A1 Electrical cables up to Ø14mm (bundle)	E1120	Nullifire FS702 around cables
Type D2 Electrical cables up to Ø80mm (single)		
Type C2 Electrical cables up to Ø61mm (single)		
Cat, 5E Electrical cables (bundle)		
Twin and earth cables (bundle)		

### THE CONTENTS OF THE DRAWING

**Cables penetrating through a flexible or rigid wall construction**

DESIGNER

REV

DATE

28.9.2018

SCALE

Not scaled

DETAIL MARK

**FB750-SS8**

Nullifire has provided this specification on the basis of the data and information given to Nullifire by the customer, the Nullifire product information and level of technical knowledge this specification relates to is expected to provide the level of fire performance, should the proposed detail be subjected to the standardised fire resistance performance against which the judgment has been made.

The accuracy of this specification relies on the following:  
1. Only Nullifire products as defined in the specification are used.  
2. The specific products are installed by a competent person, utilising Nullifire installation manual and data sheets noting limitations.  
3. The proposed specification has been checked by the user.  
4. For Details on CE Marked Products Refer to the CE Technical Data Sheets.

SEAL OF APPROVAL MUST BE VERIFIED IF THIS DOCUMENT HAS BEEN MODIFIED

**Nullifire**