

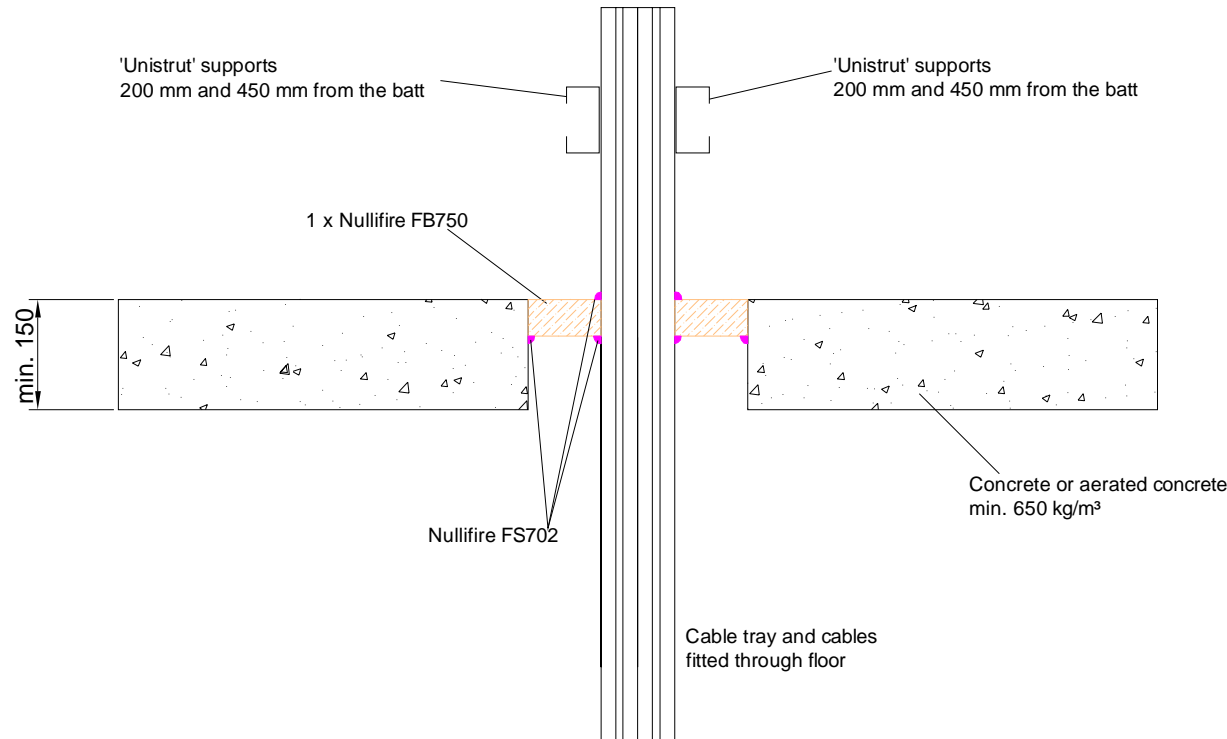
Nullifire Technical Drawings

FB750 Coated Batts Electrical Service Penetrations Through Floors

Table of Contents

- ▶ Cables penetrating through rigid floor construction (FB750-SL1)
- ▶ Unshethed wires and Type B or C cables penetrating through rigid floor construction (FB750-SL2)
- ▶ HDPE conduit and 8No twin and earth cables penetrating through a rigid floor construction (FB750-SL3)
- ▶ Cat 5 or fire alarm cables penetrating through a rigid floor construction with 2x50mm FB750 (FB750-SL4)
- ▶ Cables penetrating through a rigid floor construction with 2x50mm FB750 (FB750-SL5)
- ▶ Cables and timber penetrating through a rigid floor construction with 2x50mm FB750 (FB750-SPL5)

Nullifire FB750-SL1



APPROVAL:

ETA 17/0392

Tested cable types and max. Ø of the cables
Look at the table in this detail

FB750-SL1

Fire class; Look at the table in this detail

Additional information ETA-approval/ Annex A.

Technical installation instructions need to be followed installing the products.

The max. seal size of 550 x 330 mm

Type B cable = 1 x 95 mm² core HD603.3 electrical cable with PVC insulation, PVC sheath and 18-21 mm diameter

Type C1 cable = 4 x 95 mm² core HD604.5 electrical cable with XLPE insulation, EVA sheath and 42 mm diameter

Type C2 cable = 4 x 95 mm² core HD22.4 electrical cable with EPR insulation, PO sheath and 48.4-61 mm diameter

Type C3 cable = 4 x 95 mm² core HD603.3 electrical cable with PVC insulation, PVC sheath and 42 mm diameter

Services	Fire class
Type B Electrical cables up to 21 mm Ø (single, on steel ladder up to 150 mm wide)	EI30
Type C1 Electrical cables up to 47 mm Ø (single, on steel ladder up to 150 mm wide)	
Type C2 Electrical cables up to 61 mm Ø (single, on steel ladder up to 150 mm wide)	
Type C3 Electrical cables up to 42 mm Ø (single, on steel ladder up to 150 mm wide)	
Unsheathed wires up to 24 mm diameter	

THE CONTENTS OF THE DRAWING

Cables penetrating through rigid floor construction

DESIGNER

REV

Nullifire has provided this specification on the basis of the data and information given to Nullifire by the customer, the Nullifire product information and level of technical knowledge this specification relates to is expected to provide the level of fire performance, should the proposed detail be subjected to the standardised fire resistance performance against which the judgment has been made.

The accuracy of this specification relies on the following:
 1. Only Nullifire products as defined in the specification are used.
 2. The specific products are installed by a competent person, utilising Nullifire installation manual and data sheets noting limitations.
 3. The proposed specification has been checked by the user.
 4. For Details on CE Marked Products Refer to the CE Technical Data Sheets.

SEAL OF APPROVAL MUST BE VERIFIED IF THIS DOCUMENT HAS BEEN MODIFIED

DATE

28.9.2018

SCALE

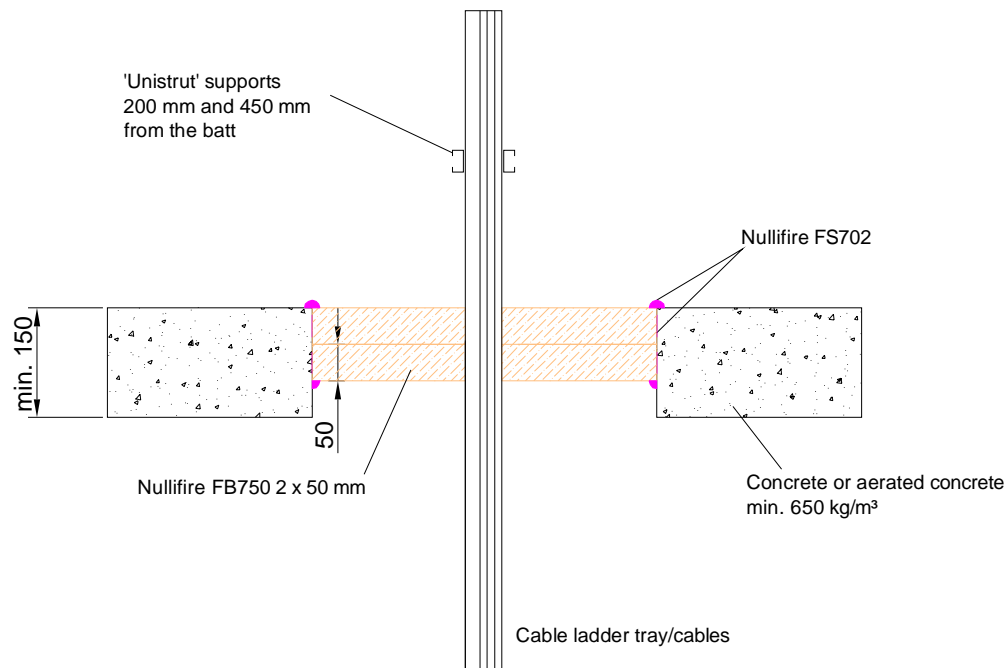
Not scaled

DETAIL MARK

FB750-SL1

Nullifire

Nullifire FB750-SL2



APPROVAL:

ETA 17/0392

Tested cable types and max. Ø of the cables
Look at the table in this detail

FB750-SL2

Fire class; Look at the table in this detail

Additional information ETA-approval/ Annex A.

Technical installation instructions need to be followed installing the products.

The max. seal size of 600 x 600mm

Min. 110 mm to edge of seal and between services and the min. permitted separation between pipes of 145 mm

The max. cross section of services 60 %.

Type B cable = 1 x 95 mm² core HD603.3 electrical cable with PVC insulation, PVC sheath and Ø18-21 mm

Type C1 cable = 4 x 95 mm² core HD604.5 electrical cable with XLPE insulation, EVA sheath and Ø42 mm

Type C2 cable = 4 x 95 mm² core HD22.4 electrical cable with EPR insulation, PO sheath and Ø48.4-61 mm

Type C3 cable = 4 x 95 mm² core HD603.3 electrical cable with PVC insulation, PVC sheath and Ø42 mm

Services	Fire class	Seal component
Type B Electrical cables up to Ø21mm (single, on steel ladder up to 150mm wide)	EI60	None
Type C1 Electrical cables up to Ø47mm (single, on steel ladder up to 150mm wide)		
Type C2 Electrical cables up to Ø61mm (single, on steel ladder up to 150mm wide)		
Type C3 Electrical cables up to Ø42mm (single, on steel ladder up to 150mm wide)		
Unsheathed wires up to Ø24mm	EI30	

THE CONTENTS OF THE DRAWING

Unsheathed wires and Type B or C cables penetrating through rigid floor construction

DESIGNER

REV

Nullifire has provided this specification on the basis of the data and information given to Nullifire by the customer, the Nullifire product information and level of technical knowledge this specification relates to is expected to provide the level of fire performance, should the proposed detail be subjected to the standardised fire resistance performance against which the judgment has been made.

The accuracy of this specification relies on the following:
1. Only Nullifire products as defined in the specification are used.
2. The specific products are installed by a competent person, utilising Nullifire installation manual and data sheets noting limitations.
3. The proposed specification has been checked by the user.
4. For Details on CE Marked Products Refer to the CE Technical Data Sheets.

SEAL OF APPROVAL MUST BE VERIFIED IF THIS DOCUMENT HAS BEEN MODIFIED

DATE

28.9.2018

SCALE

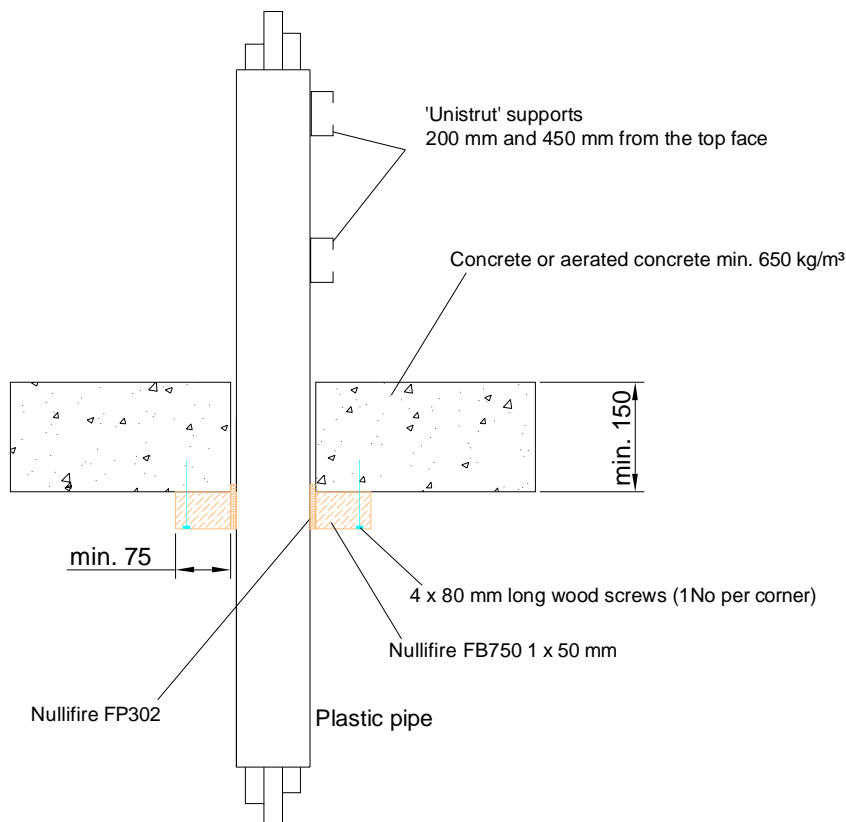
Not scaled

DETAIL MARK

FB750-SL2

Nullifire

Nullifire **FB750-SL3**



APPROVAL:

ETA 17/0391

Tested pipe types and max. Ø of the pipes

Look at the table in this detail

FB750-SL3

Fire class; Look at the table in this detail

Additional information ETA-approval/ Annex A.

Technical installation instructions need to be followed installing the products.

The max. batt seal opening size
Ø70 mm

U/C = (Uncapped/Capped)

Services	Seal specification	Fire class
Min. 1150 mm long HDPE conduit Ø55mm x 3.2mm wall thickness, containing 8No twin and earth cables	Nullifire FP302 60mm wide x 4mm thick recessed into batt and overlapping into floor	EI240 U/U

THE CONTENTS OF THE DRAWING

HDPE conduit and 8No twin and earth cables
penetrating through a rigid floor construction

DESIGNER

REV

DATE

28.9.2018

SCALE

Not scaled

DETAIL MARK

FB750-SL3

Nullifire has provided this specification on the basis of the data and information given to Nullifire by the customer, the Nullifire product information and level of technical knowledge this specification relates to is expected to provide the level of fire performance, should the proposed detail be subjected to the standardised fire resistance performance against which the judgment has been made.

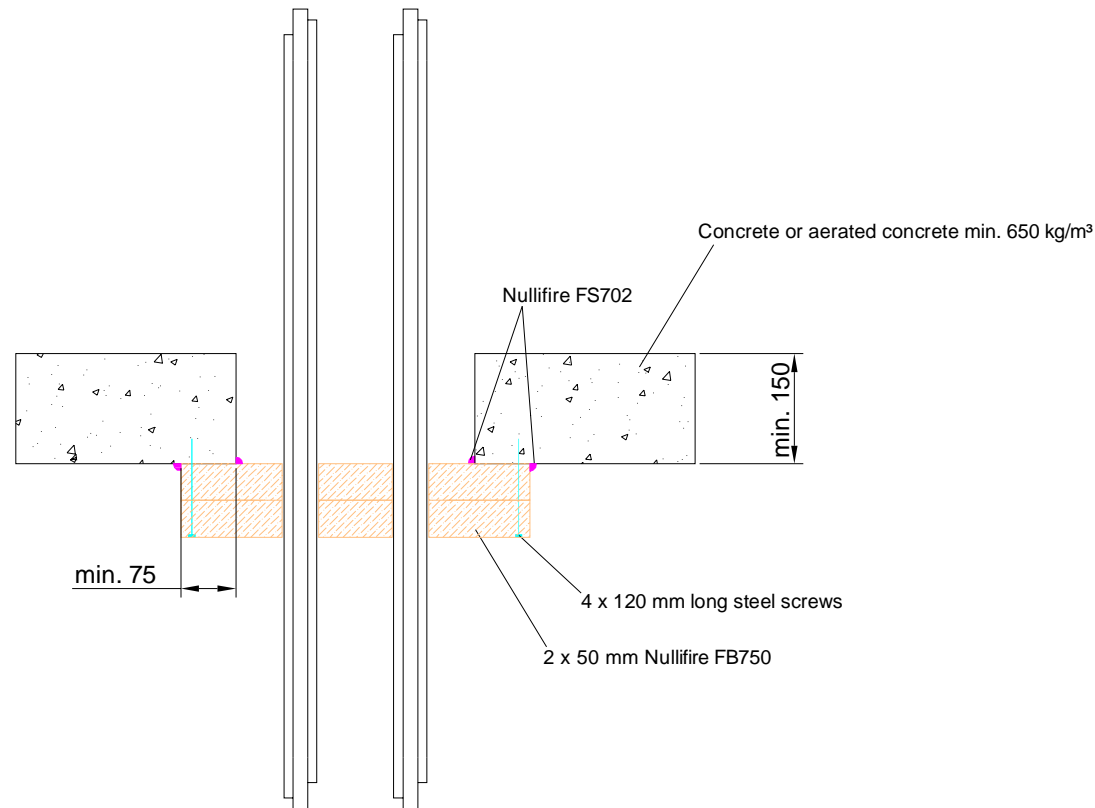
The accuracy of this specification relies on the following:

1. Only Nullifire products as defined in the specification are used.
2. The specific products are installed by a competent person, utilising Nullifire installation manual and data sheets noting limitations.
3. The proposed specification has been checked by the user.
4. For Details on CE Marked Products Refer to the CE Technical Data Sheets.

SEAL OF APPROVAL MUST BE VERIFIED IF THIS DOCUMENT HAS BEEN MODIFIED

Nullifire

Nullifire **FB750-SL4**



APPROVAL:

ETA 17/0391

Tested cable types and max. Ø of the cables
Look at the table in this detail

FB750-SL4

Fire class; Look at the table in this detail

Additional information ETA-approval/ Annex A.

Technical installation instructions need to be followed installing the products.

The max. batt seal opening size of 650 x 400 mm

Services	Fire class
Cat 5 electrical cables (bundle)	E1120
Fire alarm cables (bundle)	

THE CONTENTS OF THE DRAWING

Cat 5 or fire alarm cables penetrating through a rigid floor construction with 2x50mm FB750

DESIGNER

REV

DATE

28.9.2018

SCALE

Not scaled

DETAIL MARK

FB750-SL4

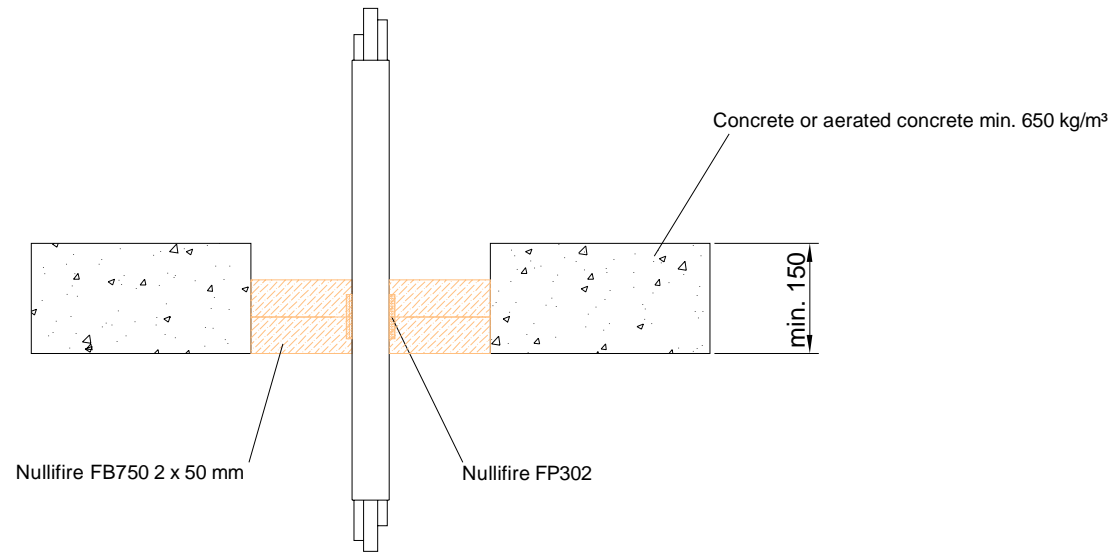
Nullifire has provided this specification on the basis of the data and information given to Nullifire by the customer, the Nullifire product information and level of technical knowledge this specification relates to is expected to provide the level of fire performance, should the proposed detail be subjected to the standardised fire resistance performance against which the judgment has been made.

The accuracy of this specification relies on the following:
1. Only Nullifire products as defined in the specification are used.
2. The specific products are installed by a competent person, utilising Nullifire installation manual and data sheets noting limitations.
3. The proposed specification has been checked by the user.
4. For Details on CE Marked Products Refer to the CE Technical Data Sheets.

SEAL OF APPROVAL MUST BE VERIFIED IF THIS DOCUMENT HAS BEEN MODIFIED

Nullifire

Nullifire
FB750-SL5



APPROVAL:

ETA 17/0391

Tested cable types and max. Ø of the cables
Look at the table in this detail

FB750-SL5

Fire class; Look at the table in this detail

Additional information ETA-approval/ Annex A.

Technical installation instructions need to be followed installing the products.

The max. batt seal opening size of 400 x 400 mm

U/C = (Uncapped/Capped)

Services	Seal specification	Fire class
ABS Ø55mm x 3.2mm wall thickness x 300mm long conduit containing 10 no. fire alarm cables and 5No. twin and earth cables	Nullifire FP302 1No. layer 60mm wide x 4mm thick at mid-depth	EI60 U/U

THE CONTENTS OF THE DRAWING

Cables penetrating through a rigid floor construction with 2x50mm FB750

DESIGNER

REV

DATE

28.9.2018

SCALE

Not scaled

DETAIL MARK

FB750-SL5

Nullifire has provided this specification on the basis of the data and information given to Nullifire by the customer, the Nullifire product information and level of technical knowledge this specification relates to is expected to provide the level of fire performance, should the proposed detail be subjected to the standardised fire resistance performance against which the judgment has been made.

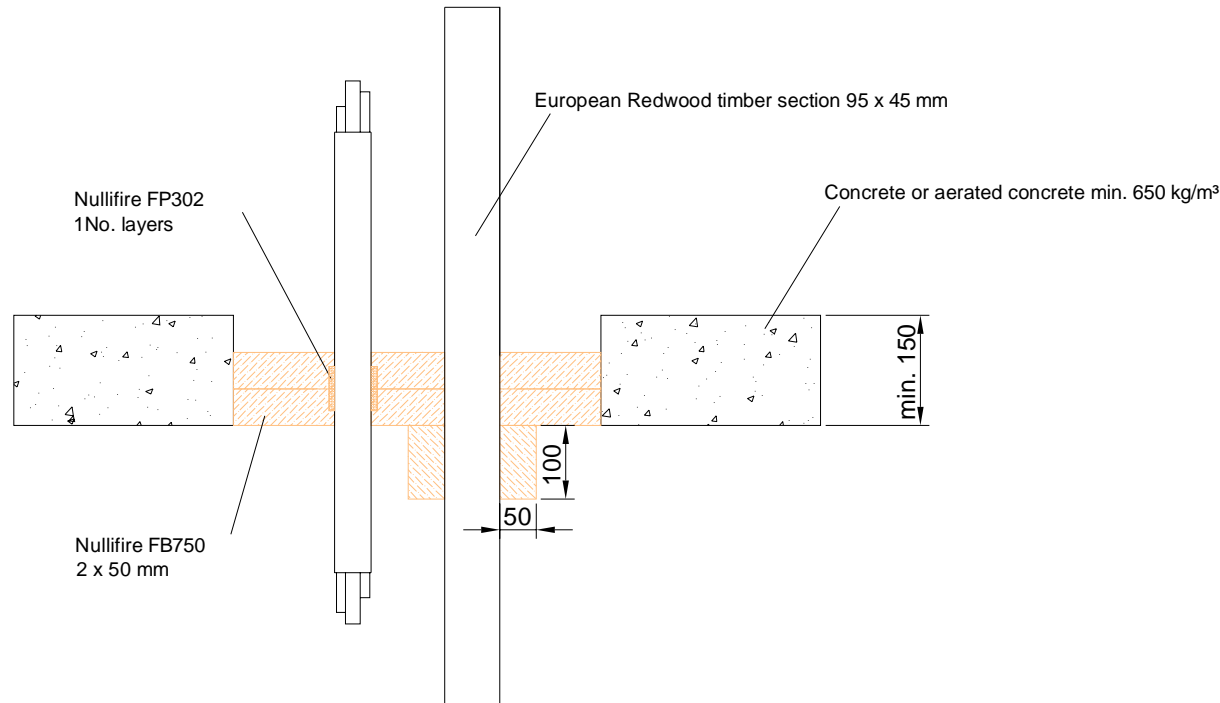
The accuracy of this specification relies on the following:

1. Only Nullifire products as defined in the specification are used.
2. The specific products are installed by a competent person, utilising Nullifire installation manual and data sheets noting limitations.
3. The proposed specification has been checked by the user.
4. For Details on CE Marked Products Refer to the CE Technical Data Sheets.

SEAL OF APPROVAL MUST BE VERIFIED IF THIS DOCUMENT HAS BEEN MODIFIED

Nullifire

Nullifire FB750-SPL5



APPROVAL:

ETA 17/0391

**Tested cable and timber
types and max. Ø of the
cables**

Look at the table in this detail

FB750-SPL5

Fire class; Look at the table in
this detail

Additional information ETA-
approval/ Annex A.

Technical installation
instructions need to be followed
installing the products.

The max. batt seal opening size of
400 x 400 mm

U/C = (Uncapped/Capped)

Services	Seal specification	Fire class
ABS Ø55mm x 3.2mm wall thickness x 300mm long conduit containing 10 no. fire alarm cables and 5No. twin and earth cables	Nullifire FP302 1No. layer 60mm wide x 4mm thick at mid-depth	EI60 U/U
95mm x 45mm European Redwood timber section	100 mm long Nullifire FB750 cladding to the underside of the seal	EI180

THE CONTENTS OF THE DRAWING

**Cables and timber penetrating through a rigid floor
construction with 2x50mm FB750**

DESIGNER

REV

DATE

28.9.2018

SCALE

Not scaled

DETAIL MARK

FB750-SPL5

Nullifire has provided this specification on the basis of the data and information given to Nullifire by the customer, the Nullifire product information and level of technical knowledge this specification relates to is expected to provide the level of fire performance, should the proposed detail be subjected to the standardised fire resistance performance against which the judgment has been made.

The accuracy of this specification relies on the following:
1. Only Nullifire products as defined in the specification are used.
2. The specific products are installed by a competent person, utilising Nullifire installation manual and data sheets noting limitations.
3. The proposed specification has been checked by the user.
4. For Details on CE Marked Products Refer to the CE Technical Data Sheets.

SEAL OF APPROVAL MUST BE VERIFIED IF THIS DOCUMENT HAS BEEN MODIFIED

Nullifire